

AAMP Polyclonal Antibody
Purified Rabbit Polyclonal Antibody (Pab)
Catalog # AP54481

Specification

AAMP Polyclonal Antibody - Product Information

Application	FC
Primary Accession	Q13685
Reactivity	Rat, Pig, Dog, Cow
Host	Rabbit
Clonality	Polyclonal
Calculated MW	46751

AAMP Polyclonal Antibody - Additional Information

Gene ID 14

Other Names

Angio-associated migratory cell protein, AAMP

Format

0.01M TBS(pH7.4) with 1% BSA, 0.09% (W/V) sodium azide and 50% Glyce

Storage

Store at -20 °C for one year. Avoid repeated freeze/thaw cycles. When reconstituted in sterile pH 7.4 0.01M PBS or diluent of antibody the antibody is stable for at least two weeks at 2-4 °C.

AAMP Polyclonal Antibody - Protein Information

Name AAMP

Function

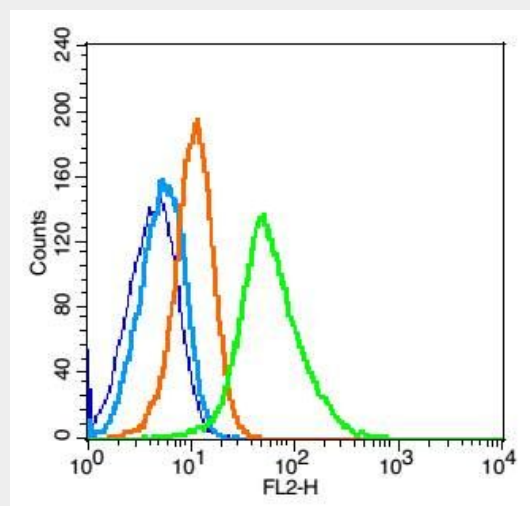
Plays a role in angiogenesis and cell migration. In smooth muscle cell migration, may act through the RhoA pathway.

Cellular Location

Cell membrane. Cytoplasm.

Tissue Location

Expressed in metastatic melanoma, liver, skin, kidney, heart, lung, lymph node,



Blank control(blue): Raji(fixed with 2% paraformaldehyde (10 min)).

Primary Antibody:Rabbit Anti-AAMP antibody(bs-11388R), Dilution: 1 µg in 100 µL 1X PBS containing 0.5% BSA;

Isotype Control Antibody: Rabbit IgG(orange) ,used under the same conditions);

Secondary Antibody: Goat anti-rabbit IgG-PE(white blue), Dilution: 1:200 in 1 X PBS containing 0.5% BSA.

skeletal muscle and brain, and also in A2058 melanoma cells and activated T-cells (at protein level) Expressed in blood vessels. Strongly expressed in endothelial cells, cytotrophoblasts, and poorly differentiated. colon adenocarcinoma cells found in lymphatics.

AAMP Polyclonal Antibody - Protocols

Provided below are standard protocols that you may find useful for product applications.

- [Western Blot](#)
- [Blocking Peptides](#)
- [Dot Blot](#)
- [Immunohistochemistry](#)
- [Immunofluorescence](#)
- [Immunoprecipitation](#)
- [Flow Cytometry](#)
- [Cell Culture](#)