

PLXNB3 Polyclonal Antibody
Purified Rabbit Polyclonal Antibody (Pab)
Catalog # AP54515

Specification

PLXNB3 Polyclonal Antibody - Product Information

Application	IHC-P
Primary Accession	Q9ULL4
Reactivity	Rat, Pig, Dog
Host	Rabbit
Clonality	Polyclonal
Calculated MW	206847

PLXNB3 Polyclonal Antibody - Additional Information

Gene ID 5365

Other Names

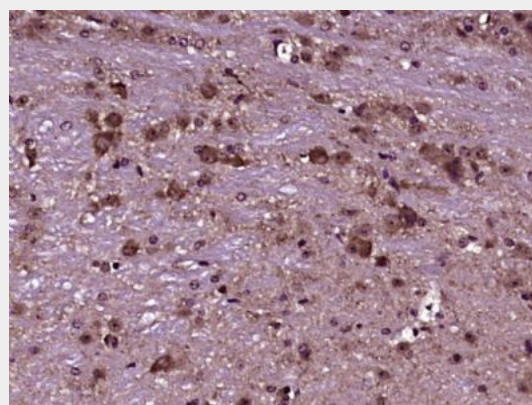
Plexin-B3, PLXNB3, KIAA1206, PLXN6

Format

0.01M TBS(pH7.4) with 1% BSA, 0.09% (W/V) sodium azide and 50% Glyce

Storage

Store at -20 °C for one year. Avoid repeated freeze/thaw cycles. When reconstituted in sterile pH 7.4 0.01M PBS or diluent of antibody the antibody is stable for at least two weeks at 2-4 °C.



Paraformaldehyde-fixed, paraffin embedded (Mouse cerebellum); Antigen retrieval by boiling in sodium citrate buffer (pH6.0) for 15min; Block endogenous peroxidase by 3% hydrogen peroxide for 20 minutes; Blocking buffer (normal goat serum) at 37°C for 30min; Antibody incubation with (PLXNB3) Polyclonal Antibody, Unconjugated (bs-11470R) at 1:400 overnight at 4°C, followed by operating according to SP Kit(Rabbit) (sp-0023) instructions and DAB staining.

PLXNB3 Polyclonal Antibody - Protein Information

Name PLXNB3

Synonyms KIAA1206, PLXN6

Function

Receptor for SEMA5A that plays a role in axon guidance, invasive growth and cell migration. Stimulates neurite outgrowth and mediates Ca(2+)/Mg(2+)-dependent cell aggregation. In glioma cells, SEMA5A stimulation of PLXNB3 results in the disassembly of F-actin stress fibers, disruption of focal adhesions and cellular collapse as well as inhibition of cell migration and invasion through ARHGDI-

mediated inactivation of RAC1.

Cellular Location

Cell membrane; Single-pass type I membrane protein Note=Colocalizes with RIT2/RIN at the plasma membrane

Tissue Location

Expression detected in Purkinje and granular cells in cerebellum, and in brain neocortex but not in corpus callosum
Expressed in glioma cells and embryonic kidney cells (at protein level). Expressed in brain, liver, pancreas and placenta, with weak expression detected also in lung and kidney. Expressed in several glioma cell lines.

PLXNB3 Polyclonal Antibody - Protocols

Provided below are standard protocols that you may find useful for product applications.

- [Western Blot](#)
- [Blocking Peptides](#)
- [Dot Blot](#)
- [Immunohistochemistry](#)
- [Immunofluorescence](#)
- [Immunoprecipitation](#)
- [Flow Cytometry](#)
- [Cell Culture](#)