

**GKAP1 Antibody (C-term)**  
**Affinity Purified Rabbit Polyclonal Antibody (Pab)**  
**Catalog # AP5474b**

**Specification**

**GKAP1 Antibody (C-term) - Product Information**

Application	<b>WB, IHC-P,E</b>
Primary Accession	<a href="#">Q5VSY0</a>
Other Accession	<a href="#">Q5XIG5</a> , <a href="#">Q9JMB0</a> , <a href="#">Q32LE2</a> , <a href="#">NP_001129425.1</a>
Reactivity Predicted	<b>Human</b> <b>Bovine, Mouse,</b> <b>Rat</b>
Host	<b>Rabbit</b>
Clonality	<b>Polyclonal</b>
Isotype	<b>Rabbit Ig</b>
Calculated MW	<b>42078</b>
Antigen Region	<b>331-359</b>

**GKAP1 Antibody (C-term) - Additional Information**

**Gene ID** 80318

**Other Names**

G kinase-anchoring protein 1,  
cGMP-dependent protein kinase-anchoring  
protein of 42 kDa, GKAP1, GKAP42

**Target/Specificity**

This GKAP1 antibody is generated from rabbits immunized with a KLH conjugated synthetic peptide between 331-359 amino acids from the C-terminal region of human GKAP1.

**Dilution**

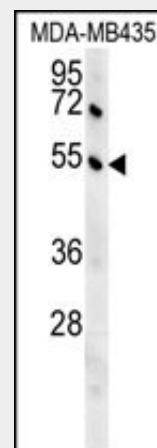
WB~~1:1000  
IHC-P~~1:50~100

**Format**

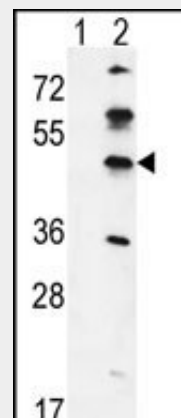
Purified polyclonal antibody supplied in PBS with 0.09% (W/V) sodium azide. This antibody is purified through a protein A column, followed by peptide affinity purification.

**Storage**

Maintain refrigerated at 2-8°C for up to 2 weeks. For long term storage store at -20°C in small aliquots to prevent freeze-thaw



GKAP1 Antibody (C-term) (Cat.#AP5474b) western blot analysis in MDA-MB435 cell line lysates (35ug/lane). This demonstrates the GKAP1 antibody detected the GKAP1 protein (arrow).



Western blot analysis of GKAP1 (arrow) using rabbit polyclonal GKAP1 Antibody (C-term) (Cat. #AP5474b). 293 cell lysates (2 ug/lane) either nontransfected (Lane 1) or transiently transfected (Lane 2) with the GKAP1 gene.

cycles.

#### Precautions

GKAP1 Antibody (C-term) is for research use only and not for use in diagnostic or therapeutic procedures.

#### GKAP1 Antibody (C-term) - Protein Information

**Name** GKAP1

**Synonyms** GKAP42

#### Function

Regulates insulin-dependent IRS1 tyrosine phosphorylation in adipocytes by modulating the availability of IRS1 to IR tyrosine kinase. Its association with IRS1 is required for insulin-induced translocation of SLC2A4 to the cell membrane. Involved in TNF-induced impairment of insulin-dependent IRS1 tyrosine phosphorylation.

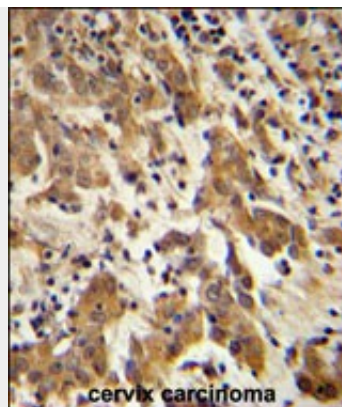
#### Cellular Location

Golgi apparatus  
{ECO:0000250|UniProtKB:Q9JMB0}.

#### GKAP1 Antibody (C-term) - Protocols

Provided below are standard protocols that you may find useful for product applications.

- [Western Blot](#)
- [Blocking Peptides](#)
- [Dot Blot](#)
- [Immunohistochemistry](#)
- [Immunofluorescence](#)
- [Immunoprecipitation](#)
- [Flow Cytometry](#)
- [Cell Culture](#)



GKAP1 Antibody (C-term) (Cat. #AP5474b) immunohistochemistry analysis in formalin fixed and paraffin embedded human cervix carcinoma followed by peroxidase conjugation of the secondary antibody and DAB staining. This data demonstrates the use of the GKAP1 Antibody (C-term) for immunohistochemistry. Clinical relevance has not been evaluated.

#### GKAP1 Antibody (C-term) - Background

GKAP1 is a protein that is highly similar to the mouse cGMP-dependent protein kinase anchoring protein 42kDa. The mouse protein has been found to localize with the Golgi and recruit cGMP-dependent protein kinase I alpha to the Golgi in mouse testes. It is thought to play a role in germ cell development. Transcript variants encoding different isoforms have been found for this gene.

#### GKAP1 Antibody (C-term) - References

Lim, J., et al. Cell 125(4):801-814(2006)  
Sweetser, D.A., et al. Genes Chromosomes Cancer 44(3):279-291(2005)  
Yuasa, K., et al. J. Biol. Chem. 275(7):4897-4905(2000)