

Phospho1 Polyclonal Antibody
Purified Rabbit Polyclonal Antibody (Pab)
Catalog # AP54888

Specification

Phospho1 Polyclonal Antibody - Product Information

Application	WB, IHC-P
Primary Accession	Q8TCT1
Reactivity	Rat, Pig, Dog, Cow
Host	Rabbit
Clonality	Polyclonal
Calculated MW	29713

Phospho1 Polyclonal Antibody - Additional Information

Gene ID 162466

Other Names

Phosphoethanolamine/phosphocholine phosphatase, 3.1.3.75, PHOSPHO1

Format

0.01M TBS(pH7.4) with 1% BSA, 0.09% (W/V) sodium azide and 50% Glyce

Storage

Store at -20 °C for one year. Avoid repeated freeze/thaw cycles. When reconstituted in sterile pH 7.4 0.01M PBS or diluent of antibody the antibody is stable for at least two weeks at 2-4 °C.

Phospho1 Polyclonal Antibody - Protein Information

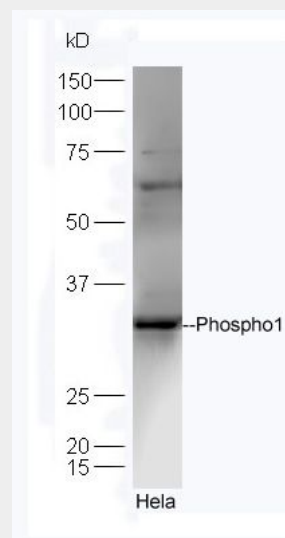
Name PHOSPHO1

Function

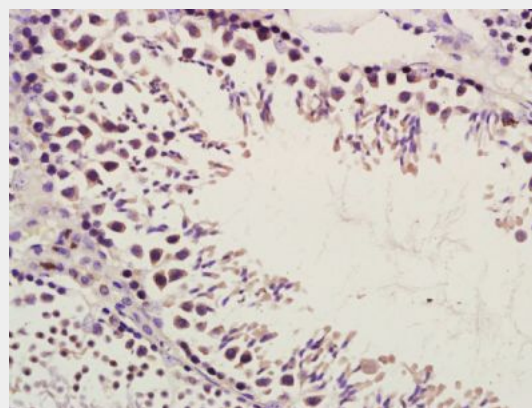
Phosphatase that has a high activity toward phosphoethanolamine (PEA) and phosphocholine (PCho). Involved in the generation of inorganic phosphate for bone mineralization.

Tissue Location

Expressed at sites of mineralization in bone and cartilage. Highly expressed in



Sample: HeLa Cell (Human) Lysate at 40 ug
Primary: Anti-Phospho1 (bs-12562R) at 1/300 dilution
Secondary: HRP conjugated Goat-Anti-rabbit IgG (bs-0295G-HRP) at 1/5000 dilution
Predicted band size: 30 kD
Observed band size: 30 kD



Paraformaldehyde-fixed, paraffin embedded (Mouse testis); Antigen retrieval by boiling in sodium citrate buffer (pH6.0) for 15min; Block endogenous peroxidase by 3% hydrogen peroxide for 20 minutes; Blocking buffer (normal goat serum) at 37°C for 30min; Antibody incubation with (Phospho1)

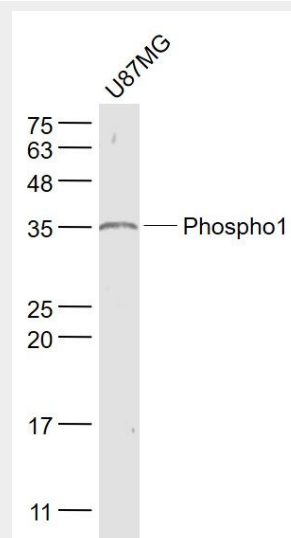
osteoblast cell line SaOS-2 which produces a mineralized matrix, but not in MG-63 cell line, which do not mineralize.

Phospho1 Polyclonal Antibody - Protocols

Provided below are standard protocols that you may find useful for product applications.

- [Western Blot](#)
- [Blocking Peptides](#)
- [Dot Blot](#)
- [Immunohistochemistry](#)
- [Immunofluorescence](#)
- [Immunoprecipitation](#)
- [Flow Cytometry](#)
- [Cell Culture](#)

Polyclonal Antibody, Unconjugated (bs-12562R) at 1:500 overnight at 4°C, followed by a conjugated secondary (sp-0023) for 20 minutes and DAB staining.



Sample:
U87MG(Human) Cell Lysate at 30 ug
Primary: Anti- Phospho1 (bs-12562R) at 1/1000 dilution
Secondary: IRDye800CW Goat Anti-Rabbit IgG at 1/20000 dilution
Predicted band size: 30 kD
Observed band size: 35 kD