

CTNNAL1 Polyclonal Antibody
Purified Rabbit Polyclonal Antibody (Pab)
Catalog # AP56441

Specification

CTNNAL1 Polyclonal Antibody - Product Information

Application	IHC-P
Primary Accession	Q9UBT7
Reactivity	Rat
Host	Rabbit
Clonality	Polyclonal
Calculated MW	81896

CTNNAL1 Polyclonal Antibody - Additional Information

Gene ID 8727

Other Names

Alpha-catulin, Alpha-catenin-related protein, ACRP, Catenin alpha-like protein 1, CTNNAL1

Format

0.01M TBS(pH7.4) with 1% BSA, 0.09% (W/V) sodium azide and 50% Glyce

Storage

Store at -20 °C for one year. Avoid repeated freeze/thaw cycles. When reconstituted in sterile pH 7.4 0.01M PBS or diluent of antibody the antibody is stable for at least two weeks at 2-4 °C.

CTNNAL1 Polyclonal Antibody - Protein Information

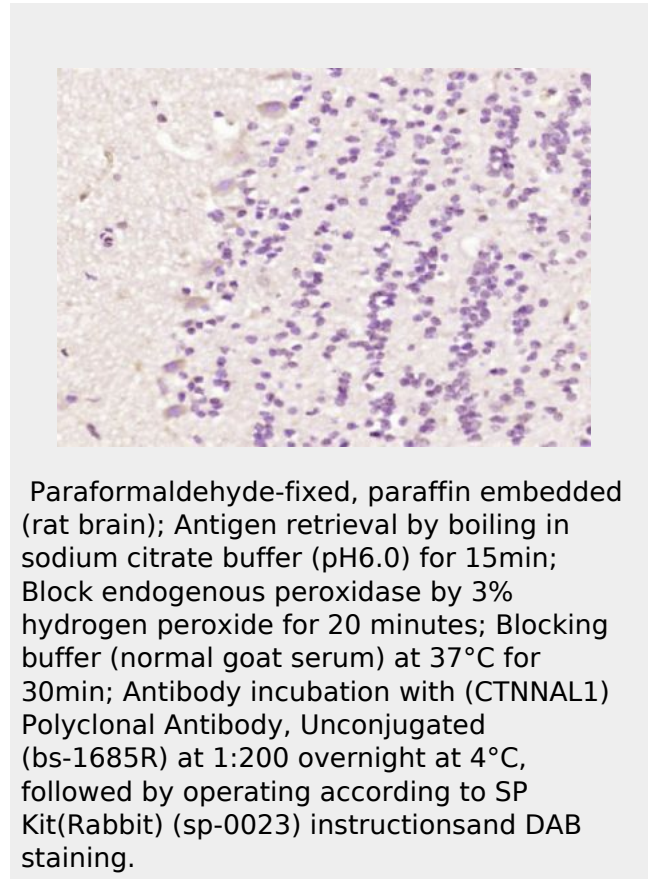
Name CTNNAL1

Function

May modulate the Rho pathway signaling by providing a scaffold for the Lbc Rho guanine nucleotide exchange factor (ARHGEF1).

Cellular Location

Cytoplasm, cytoskeleton. Cell membrane; Peripheral membrane protein



Tissue Location

Widely expressed. Expressed at lower level in neural tissues and at the highest level in the adrenal gland

CTNNAL1 Polyclonal Antibody - Protocols

Provided below are standard protocols that you may find useful for product applications.

- [Western Blot](#)
- [Blocking Peptides](#)
- [Dot Blot](#)
- [Immunohistochemistry](#)
- [Immunofluorescence](#)
- [Immunoprecipitation](#)
- [Flow Cytometry](#)
- [Cell Culture](#)