

CACNA2D4 Antibody (N-term)
Affinity Purified Rabbit Polyclonal Antibody (Pab)
Catalog # AP5708a

Specification

CACNA2D4 Antibody (N-term) - Product Information

Application	WB, FC,E
Primary Accession	Q7Z3S7
Other Accession	NP_758952.4
Reactivity	Human
Host	Rabbit
Clonality	Polyclonal
Isotype	Rabbit Ig
Calculated MW	127938
Antigen Region	89-118

CACNA2D4 Antibody (N-term) - Additional Information

Gene ID 93589

Other Names

Voltage-dependent calcium channel subunit alpha-2/delta-4, Voltage-gated calcium channel subunit alpha-2/delta-4, Voltage-dependent calcium channel subunit alpha-2-4, Voltage-dependent calcium channel subunit delta-4, CACNA2D4

Target/Specificity

This CACNA2D4 antibody is generated from rabbits immunized with a KLH conjugated synthetic peptide between 89-118 amino acids from the N-terminal region of human CACNA2D4.

Dilution

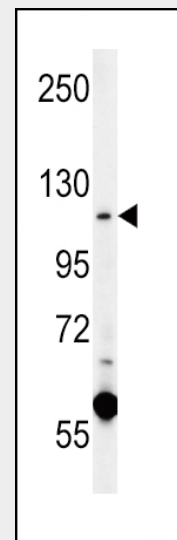
WB~~1:1000
FC~~1:10~50

Format

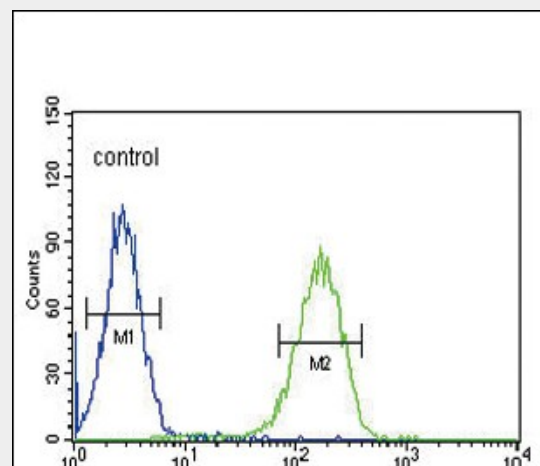
Purified polyclonal antibody supplied in PBS with 0.09% (W/V) sodium azide. This antibody is purified through a protein A column, followed by peptide affinity purification.

Storage

Maintain refrigerated at 2-8°C for up to 2 weeks. For long term storage store at -20°C



CACNA2D4 Antibody (N-term) (Cat. #AP5708a) western blot analysis in K562 cell line lysates (15ug/lane). This demonstrates the CACNA2D4 antibody detected the CACNA2D4 protein (arrow).



CACNA2D4 Antibody (N-term) (Cat. #AP5708a) flow cytometric analysis of K562 cells (right histogram) compared to a negative control cell (left histogram). FITC-conjugated goat-anti-rabbit secondary antibodies were used for the analysis.

in small aliquots to prevent freeze-thaw cycles.

Precautions

CACNA2D4 Antibody (N-term) is for research use only and not for use in diagnostic or therapeutic procedures.

CACNA2D4 Antibody (N-term) - Protein Information

Name CACNA2D4

Function

The alpha-2/delta subunit of voltage-dependent calcium channels regulates calcium current density and activation/inactivation kinetics of the calcium channel.

Cellular Location

Membrane; Single-pass type I membrane protein

Tissue Location

Predominantly expressed in certain types of endocrine cells. Present in the Paneth cells of the small intestine Also present in the erythroblasts in the fetal liver, in the cells of the zona reticularis of the adrenal gland and in the basophils of the pituitary. Present at low level in some brain regions such as the cerebellum (at protein level).

CACNA2D4 Antibody (N-term) - Background

CACNA2D4 is a member of the alpha-2/delta subunit family, a protein in the voltage-dependent calcium channel complex. Calcium channels mediate the influx of calcium ions into the cell upon membrane polarization and consist of a complex of alpha-1, alpha-2/delta, beta, and gamma subunits in a 1:1:1:1 ratio. Various versions of each of these subunits exist, either expressed from similar genes or the result of alternative splicing. Research on a highly similar protein in rabbit suggests the protein described in this record is cleaved into alpha-2 and delta subunits. Alternate transcriptional splice variants of this gene have been observed but have not been thoroughly characterized.

CACNA2D4 Antibody (N-term) - References

Wycisk, K.A., et al. Am. J. Hum. Genet. 79(5):973-977(2006)
Qin, N., et al. Mol. Pharmacol. 62(3):485-496(2002)

CACNA2D4 Antibody (N-term) - Protocols

Provided below are standard protocols that you may find useful for product applications.

- [Western Blot](#)
- [Blocking Peptides](#)
- [Dot Blot](#)
- [Immunohistochemistry](#)
- [Immunofluorescence](#)
- [Immunoprecipitation](#)
- [Flow Cytometry](#)
- [Cell Culture](#)