

ZDHHC8/ZNF378 Polyclonal Antibody
Purified Rabbit Polyclonal Antibody (Pab)
Catalog # AP57109

Specification

ZDHHC8/ZNF378 Polyclonal Antibody - Product Information

Application	IHC-P
Primary Accession	Q9ULC8
Reactivity	Rat, Pig, Dog, Cow
Host	Rabbit
Clonality	Polyclonal
Calculated MW	81443

ZDHHC8/ZNF378 Polyclonal Antibody - Additional Information

Gene ID 29801

Other Names

Palmitoyltransferase ZDHHC8, 2.3.1.225, Zinc finger DHHC domain-containing protein 8 {ECO:0000312|HGNC:HGNC:18474}, DHHC-8, Zinc finger protein 378, ZDHHC8 (HGNC:18474)

Format

0.01M TBS(pH7.4) with 1% BSA, 0.09% (W/V) sodium azide and 50% Glyce

Storage

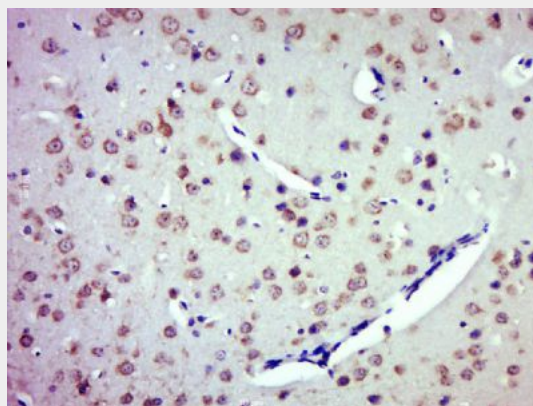
Store at -20 °C for one year. Avoid repeated freeze/thaw cycles. When reconstituted in sterile pH 7.4 0.01M PBS or diluent of antibody the antibody is stable for at least two weeks at 2-4 °C.

ZDHHC8/ZNF378 Polyclonal Antibody - Protein Information

Name ZDHHC8 ([HGNC:18474](#))

Function

Palmitoyltransferase that catalyzes the addition of palmitate onto various protein substrates and therefore functions in several unrelated biological processes



Paraformaldehyde-fixed, paraffin embedded (Mouse brain); Antigen retrieval by boiling in sodium citrate buffer (pH6.0) for 15min; Block endogenous peroxidase by 3% hydrogen peroxide for 20 minutes; Blocking buffer (normal goat serum) at 37°C for 30min; Antibody incubation with (ZDHHC8) Polyclonal Antibody, Unconjugated (bs-18486R) at 1:500 overnight at 4°C, followed by a conjugated secondary (sp-0023) for 20 minutes and DAB staining.

(Probable). Through the palmitoylation of ABCA1 regulates the localization of the transporter to the plasma membrane and thereby regulates its function in cholesterol and phospholipid efflux (Probable). Could also palmitoylate the D(2) dopamine receptor DRD2 and regulate its stability and localization to the plasma membrane (Probable). Could also play a role in glutamatergic transmission (By similarity).

Cellular Location

Golgi apparatus membrane; Multi-pass membrane protein. Mitochondrion membrane
{ECO:0000250|UniProtKB:Q5Y5T5};
Multi-pass membrane protein

Tissue Location

Widely expressed..

**ZDHHC8/ZNF378 Polyclonal Antibody -
Protocols**

Provided below are standard protocols that you may find useful for product applications.

- [Western Blot](#)
- [Blocking Peptides](#)
- [Dot Blot](#)
- [Immunohistochemistry](#)
- [Immunofluorescence](#)
- [Immunoprecipitation](#)
- [Flow Cytometry](#)
- [Cell Culture](#)