

MYO15A Polyclonal Antibody
Purified Rabbit Polyclonal Antibody (Pab)
Catalog # AP57413

Specification

MYO15A Polyclonal Antibody - Product Information

Application	IHC-P
Primary Accession	Q9UKN7
Reactivity	Rat, Dog, Cow
Host	Rabbit
Clonality	Polyclonal
Calculated MW	395293

MYO15A Polyclonal Antibody - Additional Information

Gene ID 51168

Other Names

Unconventional myosin-XV, Unconventional myosin-15, MYO15A, MYO15

Format

0.01M TBS(pH7.4) with 1% BSA, 0.09% (W/V) sodium azide and 50% Glyce

Storage

Store at -20 °C for one year. Avoid repeated freeze/thaw cycles. When reconstituted in sterile pH 7.4 0.01M PBS or diluent of antibody the antibody is stable for at least two weeks at 2-4 °C.

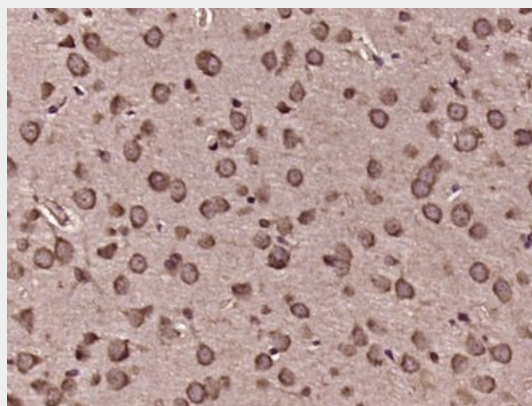
MYO15A Polyclonal Antibody - Protein Information

Name MYO15A

Synonyms MYO15

Function

Myosins are actin-based motor molecules with ATPase activity. Unconventional myosins serve in intracellular movements. Their highly divergent tails are presumed to bind to membranous compartments, which would be moved relative to actin filaments. Required for the arrangement of stereocilia in mature hair bundles (By similarity).



Paraformaldehyde-fixed, paraffin embedded (Rat brain); Antigen retrieval by boiling in sodium citrate buffer (pH6.0) for 15min; Block endogenous peroxidase by 3% hydrogen peroxide for 20 minutes; Blocking buffer (normal goat serum) at 37°C for 30min; Antibody incubation with (MYO15A) Polyclonal Antibody, Unconjugated (bs-19154R) at 1:400 overnight at 4°C, followed by operating according to SP Kit(Rabbit) (sp-0023) instructions and DAB staining.

Cellular Location

Cell projection, stereocilium. Cytoplasm, cytoskeleton. Note=Localizes to stereocilium tips in cochlear and vestibular hair cells.

Tissue Location

Highly expressed in pituitary. Also expressed at lower levels in adult brain, kidney, liver, lung, pancreas, placenta and skeletal muscle. Not expressed in brain. In the pituitary, highly expressed in anterior gland cells.

MYO15A Polyclonal Antibody - Protocols

Provided below are standard protocols that you may find useful for product applications.

- [Western Blot](#)
- [Blocking Peptides](#)
- [Dot Blot](#)
- [Immunohistochemistry](#)
- [Immunofluorescence](#)
- [Immunoprecipitation](#)
- [Flow Cytometry](#)
- [Cell Culture](#)