

NHP2 Polyclonal Antibody
Purified Rabbit Polyclonal Antibody (Pab)
Catalog # AP57448

Specification

NHP2 Polyclonal Antibody - Product Information

Application	IHC-P
Primary Accession	Q9NX24
Reactivity	Rat, Dog, Cow
Host	Rabbit
Clonality	Polyclonal
Calculated MW	17201

NHP2 Polyclonal Antibody - Additional Information

Gene ID 55651

Other Names

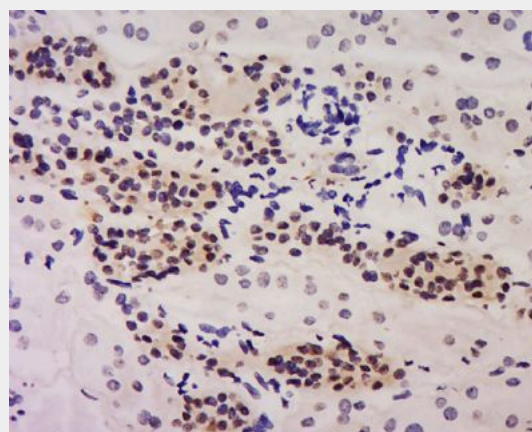
H/ACA ribonucleoprotein complex subunit 2,
Nucleolar protein family A member 2,
snoRNP protein NHP2, NHP2, NOLA2

Format

0.01M TBS(pH7.4) with 1% BSA, 0.09%
(W/V) sodium azide and 50% Glyce

Storage

Store at -20 °C for one year. Avoid repeated
freeze/thaw cycles. When reconstituted in
sterile pH 7.4 0.01M PBS or diluent of
antibody the antibody is stable for at least
two weeks at 2-4 °C.



Tissue/cell: human kidney tissue; 4%
Paraformaldehyde-fixed and
paraffin-embedded;

Antigen retrieval: citrate buffer (0.01M, pH
6.0), Boiling bathing for 15min; Block
endogenous peroxidase by 3% Hydrogen
peroxide for 30min; Blocking buffer (normal
goat serum,C-0005) at 37°C for 20 min;

Incubation: Anti-NHP2 Polyclonal Antibody,
Unconjugated(bs-19235R) 1:500, overnight at
4°C, followed by conjugation to the
secondary antibody(SP-0023) and
DAB(C-0010) staining

NHP2 Polyclonal Antibody - Protein Information

Name NHP2

Synonyms NOLA2

Function

Required for ribosome biogenesis and
telomere maintenance. Part of the H/ACA
small nucleolar ribonucleoprotein (H/ACA
snoRNP) complex, which catalyzes
pseudouridylation of rRNA. This involves the
isomerization of uridine such that the ribose
is subsequently attached to C5, instead of
the normal N1. Each rRNA can contain up to

100 pseudouridine ('psi') residues, which may serve to stabilize the conformation of rRNAs. May also be required for correct processing or intranuclear trafficking of TERC, the RNA component of the telomerase reverse transcriptase (TERT) holoenzyme.

Cellular Location

Nucleus, nucleolus. Nucleus, Cajal body.
Note=Also localized to Cajal bodies (coiled bodies)

Tissue Location

Expressed in brain, colon, heart, kidney, ovary, pancreas, placenta, prostate, skeletal muscle, small intestine, spleen, testis and thymus. Also expressed at lower levels in the liver

NHP2 Polyclonal Antibody - Protocols

Provided below are standard protocols that you may find useful for product applications.

- [Western Blot](#)
- [Blocking Peptides](#)
- [Dot Blot](#)
- [Immunohistochemistry](#)
- [Immunofluorescence](#)
- [Immunoprecipitation](#)
- [Flow Cytometry](#)
- [Cell Culture](#)