

QSOX2 Polyclonal Antibody
Purified Rabbit Polyclonal Antibody (Pab)
Catalog # AP57627**Specification****QSOX2 Polyclonal Antibody - Product Information**

Application	IHC-P
Primary Accession	Q6ZRP7
Reactivity	Rat
Host	Rabbit
Clonality	Polyclonal
Calculated MW	77529

QSOX2 Polyclonal Antibody - Additional Information**Gene ID** 169714**Other Names**

Sulfhydryl oxidase 2, 1.8.3.2,
Neuroblastoma-derived sulfhydryl oxidase,
Quiescin Q6-like protein 1, QSOX2,
QSCN6L1, SOXN

Format

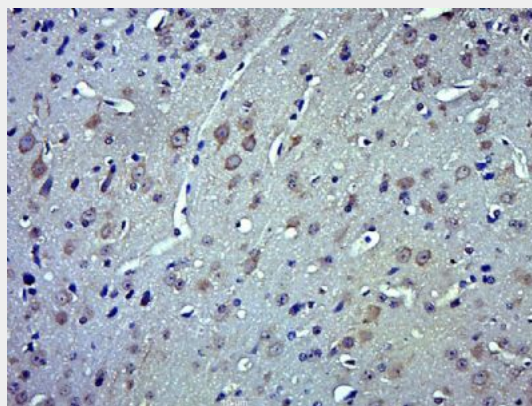
0.01M TBS(pH7.4) with 1% BSA, 0.09%
(W/V) sodium azide and 50% Glyce

Storage

Store at -20 °C for one year. Avoid repeated
freeze/thaw cycles. When reconstituted in
sterile pH 7.4 0.01M PBS or diluent of
antibody the antibody is stable for at least
two weeks at 2-4 °C.

QSOX2 Polyclonal Antibody - Protein Information**Name** QSOX2**Synonyms** QSCN6L1, SOXN**Function**

Catalyzes the oxidation of sulfhydryl groups
in peptide and protein thiols to disulfides
with the reduction of oxygen to hydrogen
peroxide. May contribute to disulfide bond
formation in a variety of secreted proteins.
Also seems to play a role in regulating the
sensitization of neuroblastoma cells for



Paraformaldehyde-fixed, paraffin embedded
(Mouse brain); Antigen retrieval by boiling in
sodium citrate buffer (pH6.0) for 15min;
Block endogenous peroxidase by 3%
hydrogen peroxide for 20 minutes; Blocking
buffer (normal goat serum) at 37°C for
30min; Antibody incubation with (QSOX2)
Polyclonal Antibody, Unconjugated
(bs-19698R) at 1:500 overnight at 4°C,
followed by a conjugated secondary
(sp-0023) for 20 minutes and DAB staining.

interferon-gamma-induced apoptosis.

Cellular Location

Membrane; Single- pass membrane protein.

Secreted. Cell membrane; Single-pass membrane protein. Nucleus membrane;

Single- pass membrane protein.

Note=Seems to be predominantly targeted to the nuclear and outer plasma membrane

Tissue Location

Expressed in pancreas, brain, placenta,

kidney, heart and fetal tissues. Weakly

expressed in lung, liver and skeletal muscles.

QSOX2 Polyclonal Antibody - Protocols

Provided below are standard protocols that you may find useful for product applications.

- [Western Blot](#)
- [Blocking Peptides](#)
- [Dot Blot](#)
- [Immunohistochemistry](#)
- [Immunofluorescence](#)
- [Immunoprecipitation](#)
- [Flow Cytometry](#)
- [Cell Culture](#)