

ELAC2/HPC2 Polyclonal Antibody
Purified Rabbit Polyclonal Antibody (Pab)
Catalog # AP58146

Specification

ELAC2/HPC2 Polyclonal Antibody - Product Information

Application	IHC-P
Primary Accession	Q9BQ52
Reactivity	Rat, Dog
Host	Rabbit
Clonality	Polyclonal
Calculated MW	92219

ELAC2/HPC2 Polyclonal Antibody - Additional Information

Gene ID 60528

Other Names

Zinc phosphodiesterase ELAC protein 2, 3.1.26.11, ElaC homolog protein 2, Heredity prostate cancer protein 2, Ribonuclease Z 2, RNase Z 2, tRNA 3 endonuclease 2, tRNase Z 2, ELAC2, HPC2

Format

0.01M TBS(pH7.4) with 1% BSA, 0.09% (W/V) sodium azide and 50% Glyce

Storage

Store at -20 °C for one year. Avoid repeated freeze/thaw cycles. When reconstituted in sterile pH 7.4 0.01M PBS or diluent of antibody the antibody is stable for at least two weeks at 2-4 °C.

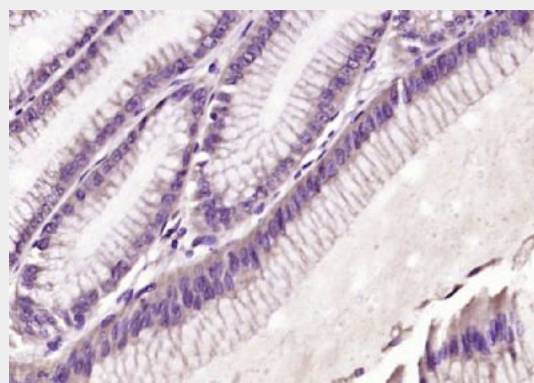
ELAC2/HPC2 Polyclonal Antibody - Protein Information

Name ELAC2

Synonyms HPC2

Function

Zinc phosphodiesterase, which displays mitochondrial tRNA 3'- processing endonuclease activity. Involved in tRNA maturation, by removing a 3'-trailer from precursor tRNA (PubMed:<a href="http://w



Paraformaldehyde-fixed, paraffin embedded (human gastric carcinoma); Antigen retrieval by boiling in sodium citrate buffer (pH6.0) for 15min; Block endogenous peroxidase by 3% hydrogen peroxide for 20 minutes; Blocking buffer (normal goat serum) at 37°C for 30min; Antibody incubation with (ELAC2) Polyclonal Antibody, Unconjugated (bs-4276R) at 1:200 overnight at 4°C, followed by operating according to SP Kit(Rabbit) (sp-0023) instructions and DAB staining.

www.uniprot.org/citations/21593607
target="_blank">21593607).
Associates with mitochondrial DNA
complexes at the nucleoids to initiate RNA
processing and ribosome assembly
(PubMed:<a href="http://www.uniprot.org/c
itations/24703694"
target="_blank">24703694).

Cellular Location

Mitochondrion. Mitochondrion matrix,
mitochondrion nucleoid. Nucleus
Note=Mainly mitochondrial

Tissue Location

Widely expressed. Highly expressed in
heart, placenta, liver, skeletal muscle,
kidney, pancreas, testis and ovary Weakly
expressed in brain, lung, spleen, thymus,
prostate, small intestine, colon and
leukocytes.

**ELAC2/HPC2 Polyclonal Antibody -
Protocols**

Provided below are standard protocols that you
may find useful for product applications.

- [Western Blot](#)
- [Blocking Peptides](#)
- [Dot Blot](#)
- [Immunohistochemistry](#)
- [Immunofluorescence](#)
- [Immunoprecipitation](#)
- [Flow Cytometry](#)
- [Cell Culture](#)