

**PGRMC Polyclonal Antibody**  
**Purified Rabbit Polyclonal Antibody (Pab)**  
**Catalog # AP58346**

**Specification**

**PGRMC Polyclonal Antibody - Product Information**

Application	<b>IHC-P</b>
Primary Accession	<a href="#">O00264</a>
Reactivity	<b>Rat, Pig, Cow</b>
Host	<b>Rabbit</b>
Clonality	<b>Polyclonal</b>
Calculated MW	<b>21671</b>

**PGRMC Polyclonal Antibody - Additional Information**

**Gene ID** 10857

**Other Names**

Membrane-associated progesterone receptor component 1, mPR, Dap1, IZA, PGRMC1 ([http://www.genenames.org/cgi-bin/gene\\_symbol\\_report?hgnc\\_id=16090](http://www.genenames.org/cgi-bin/gene_symbol_report?hgnc_id=16090) target="\_blank">HGNC:16090</a>)

**Format**

0.01M TBS(pH7.4) with 1% BSA, 0.09% (W/V) sodium azide and 50% Glycerol

**Storage**

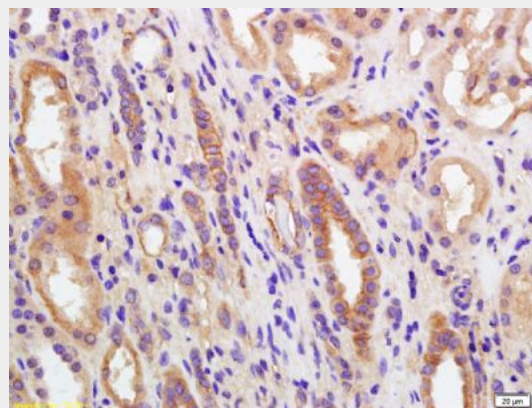
Store at -20 °C for one year. Avoid repeated freeze/thaw cycles. When reconstituted in sterile pH 7.4 0.01M PBS or diluent of antibody the antibody is stable for at least two weeks at 2-4 °C.

**PGRMC Polyclonal Antibody - Protein Information**

**Name** PGRMC1 ([HGNC:16090](#))

**Function**

Component of a progesterone-binding protein complex (PubMed:<http://www.uniprot.org/citations/28396637> target="\_blank">28396637</a>). Binds progesterone (PubMed:<http://www.uniprot.org/citations/25675345> target="\_blank">25675345</a>). Has many reported cellular functions (heme



Tissue/cell: human kidney tissue; 4% Paraformaldehyde-fixed and paraffin-embedded;

Antigen retrieval: citrate buffer ( 0.01M, pH 6.0 ), Boiling bathing for 15min; Block endogenous peroxidase by 3% Hydrogen peroxide for 30min; Blocking buffer (normal goat serum,C-0005) at 37°C for 20 min;

Incubation: Anti-PGRMC Polyclonal Antibody, Unconjugated(bs-5922R) 1:200, overnight at 4°C, followed by conjugation to the secondary antibody(SP-0023) and DAB(C-0010) staining

homeostasis, interaction with CYPs). Required for the maintenance of uterine histoarchitecture and normal female reproductive lifespan (By similarity). Intracellular heme chaperone. Regulates heme synthesis via interactions with FECH and acts as a heme donor for at least some hemoproteins (PubMed:<a href="http://www.uniprot.org/citations/27599036" target="\_blank">27599036</a>).

#### Cellular Location

Microsome membrane  
{ECO:0000250|UniProtKB:Q95250};  
Single-pass membrane protein. Smooth endoplasmic reticulum membrane;  
Single-pass membrane protein.  
Mitochondrion outer membrane  
{ECO:0000250|UniProtKB:O55022};  
Single-pass membrane protein;  
Extracellular side  
{ECO:0000250|UniProtKB:O55022}

#### Tissue Location

Widely expressed, with highest expression in liver and kidney. Expressed by endometrial glands and stroma (at protein level) (PubMed:23793472).

### PGRMC Polyclonal Antibody - Protocols

Provided below are standard protocols that you may find useful for product applications.

- [Western Blot](#)
- [Blocking Peptides](#)
- [Dot Blot](#)
- [Immunohistochemistry](#)
- [Immunofluorescence](#)
- [Immunoprecipitation](#)
- [Flow Cytometry](#)
- [Cell Culture](#)