

KIFC1 Polyclonal Antibody

Purified Rabbit Polyclonal Antibody (Pab)

Catalog # AP58757

Specification

KIFC1 Polyclonal Antibody - Product Information

Application	WB, IHC-P
Primary Accession	O9BW19
Reactivity	Rat, Pig, Cow
Host	Rabbit
Clonality	Polyclonal
Calculated MW	73748

KIFC1 Polyclonal Antibody - Additional Information

Gene ID 3833

Other Names

Kinesin-like protein KIFC1, Kinesin-like protein 2, Kinesin-related protein HSET, KIFC1, HSET, KNXL2

Format

0.01M TBS(pH7.4) with 1% BSA, 0.09% (W/V) sodium azide and 50% Glyce

Storage

Store at -20 °C for one year. Avoid repeated freeze/thaw cycles. When reconstituted in sterile pH 7.4 0.01M PBS or diluent of antibody the antibody is stable for at least two weeks at 2-4 °C.

KIFC1 Polyclonal Antibody - Protein Information

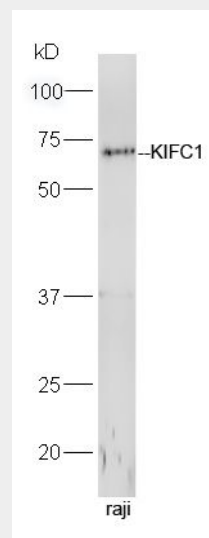
Name KIFC1

Synonyms HSET, KNXL2

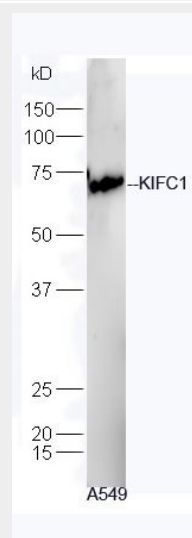
Function

Minus end-directed microtubule-dependent motor required for bipolar spindle formation (PubMed:15843429). May

contribute to movement of early endocytic vesicles (By similarity). Regulates cilium formation and structure (By similarity).



Sample: Raji Cell (Human) Lysate at 40 ug
Primary: Anti-KIFC1 (bs-7805R) at 1/300 dilution
Secondary: HRP conjugated Goat-Anti-rabbit IgG (bs-0295G-HRP) at 1/5000 dilution
Predicted band size: 74 kD
Observed band size: 74 kD



Sample: A549 Cell (Human) Lysate at 40 ug
Primary: Anti-KIFC1 (bs-7805R) at 1/300 dilution

Cellular Location

Nucleus

{ECO:0000250|UniProtKB:Q9QWT9}.

Cytoplasm, cytoskeleton, microtubule organizing center, centrosome

{ECO:0000250|UniProtKB:Q9QWT9}.

Cytoplasm, cytoskeleton, spindle

{ECO:0000250|UniProtKB:Q9QWT9}. Early endosome

{ECO:0000250|UniProtKB:Q9QWT9}.

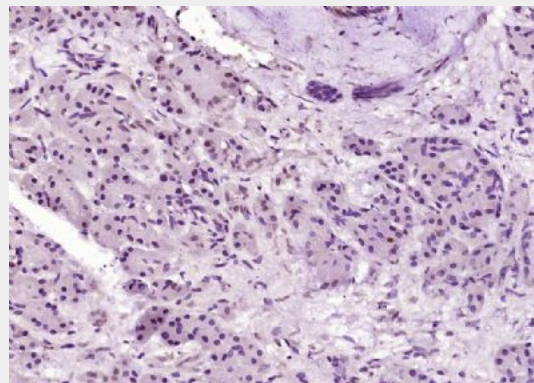
Note=Associated with nucleus during interphase, centrosomes in early and spindle in later mitosis

{ECO:0000250|UniProtKB:Q9QWT9}

Secondary: HRP conjugated Goat-Anti-rabbit IgG (bs-0295G-HRP) at 1/5000 dilution

Predicted band size: 74 kD

Observed band size: 74 kD



Paraformaldehyde-fixed, paraffin embedded (Human pancreatic cancer); Antigen retrieval by boiling in sodium citrate buffer (pH6.0) for 15min; Block endogenous peroxidase by 3% hydrogen peroxide for 20 minutes; Blocking buffer (normal goat serum) at 37°C for 30min; Antibody incubation with (KIFC1) Polyclonal Antibody, Unconjugated (bs-7805R) at 1:400 overnight at 4°C, followed by operating according to SP Kit(Rabbit) (sp-0023) instructions and DAB staining.

KIFC1 Polyclonal Antibody - Protocols

Provided below are standard protocols that you may find useful for product applications.

- [Western Blot](#)
- [Blocking Peptides](#)
- [Dot Blot](#)
- [Immunohistochemistry](#)
- [Immunofluorescence](#)
- [Immunoprecipitation](#)
- [Flow Cytometry](#)
- [Cell Culture](#)