

SARS Coronavirus Spike Glycoprotein Antibody

Purified Rabbit Polyclonal Antibody (Pab)

Catalog # AP6000b

Specification

SARS Coronavirus Spike Glycoprotein Antibody - Product Information

Application	WB,E
Primary Accession	P59594
Host	Rabbit
Clonality	Polyclonal
Isotype	Rabbit Ig
Antigen Region	532-562

SARS Coronavirus Spike Glycoprotein Antibody - Additional Information

Gene ID 1489668

Other Names

Spike glycoprotein, S glycoprotein, E2, Peplomer protein, Spike protein S1, Spike protein S2, S

Target/Specificity

This SARS virus Sm antibody is generated from rabbits immunized with a KLH conjugated synthetic peptide between 532-562 amino acids from the middle of SARS CoV Spike protein.

Dilution

WB~~1:1000

Format

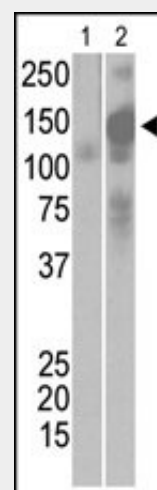
Purified polyclonal antibody supplied in PBS with 0.09% (W/V) sodium azide. This antibody is prepared by Saturated Ammonium Sulfate (SAS) precipitation followed by dialysis against PBS.

Storage

Maintain refrigerated at 2-8°C for up to 2 weeks. For long term storage store at -20°C in small aliquots to prevent freeze-thaw cycles.

Precautions

SARS Coronavirus Spike Glycoprotein Antibody is for research use only and not for use in diagnostic or therapeutic



The anti-SARS-Sm Pab (Cat. #AP6000b) is used in Western blot to detect recombinant Spike proteins, aa17-537 (Lane 1) and aa17-756 (Lane 2).

SARS Coronavirus Spike Glycoprotein Antibody - Background

An outbreak of atypical pneumonia, referred to as severe acute respiratory syndrome (SARS) and first identified in Guangdong Province, China, has spread to several countries. The severity of this disease is such that the mortality rate appears to be ~3 to 6%. A number of laboratories worldwide have undertaken the identification of the causative agent. The National Microbiology Laboratory in Canada obtained the Tor2 isolate from a patient in Toronto, and succeeded in growing a coronavirus-like agent in African Green Monkey Kidney (Vero E6) cells. This coronavirus has been named publicly by the World Health Organization and member laboratories as ?SARS virus? The SARS membrane proteins, including the major proteins S (Spike) and M (Membrane), are inserted into the endoplasmic reticulum Golgi intermediate compartment (ERGIC) while full length replicated RNA (+ strands) assemble with the N (nucleocapsid)

procedures.

SARS Coronavirus Spike Glycoprotein Antibody - Protein Information

Name S

{ECO:0000255|HAMAP-Rule:MF_04099}

Function

[Spike glycoprotein]: May down-regulate host tetherin (BST2) by lysosomal degradation, thereby counteracting its antiviral activity.

Cellular Location

Virion membrane

{ECO:0000255|HAMAP-Rule:MF_04099, ECO:0000269|PubMed:15831954};

Single-pass type I membrane protein

{ECO:0000255|HAMAP-Rule:MF_04099, ECO:0000269|PubMed:15831954}. Host endoplasmic reticulum-Golgi intermediate compartment membrane

{ECO:0000255|HAMAP-Rule:MF_04099, ECO:0000269|PubMed:20861307}; Single-pass type I membrane protein

{ECO:0000255|HAMAP-Rule:MF_04099, ECO:0000269|PubMed:15831954}. Host cell membrane {ECO:0000255|HAMAP-Rule:MF_04099,

ECO:0000269|PubMed:15831954};

Single-pass type I membrane protein

{ECO:0000255|HAMAP-Rule:MF_04099, ECO:0000269|PubMed:15831954}.

Note=Accumulates in the endoplasmic reticulum-Golgi intermediate compartment, where it participates in virus particle assembly. Colocalizes with S in the host endoplasmic reticulum-Golgi intermediate compartment (PubMed:20861307). Some S oligomers are transported to the host plasma membrane, where they may mediate cell-cell fusion.

{ECO:0000255|HAMAP-Rule:MF_04099, ECO:0000269|PubMed:20861307}

protein. The virus then migrates through the Golgi complex and eventually exits the cell, likely by exocytosis. The site of viral attachment to the host cell resides within the S protein. Oligomeric spike (S) glycoproteins extend from SARS membranes. These integral membrane proteins assemble within the endoplasmic reticulum of infected cells and are subsequently endoproteolyzed in the Golgi, generating noncovalently associated S1 and S2 fragments. Once on the surface of infected cells and virions, peripheral S1 fragments bind carcinoembryonic antigen-related cell adhesion molecule (CEACAM) receptors, and this triggers membrane fusion reactions mediated by integral membrane S2 fragments.

SARS Coronavirus Spike Glycoprotein Antibody - References

He, R., et al., Biochem. Biophys. Res. Commun. 316(2):476-483 (2004). Snijder, E.J., et al., J. Mol. Biol. 331(5):991-1004 (2003). Marra, M.A., et al., Science 300(5624):1399-1404 (2003). Krokhin, O., et al., Mol Cell Proteomics 2(5):346-356 (2003).

SARS Coronavirus Spike Glycoprotein Antibody - Protocols

Provided below are standard protocols that you may find useful for product applications.

- [Western Blot](#)
- [Blocking Peptides](#)

- [Dot Blot](#)
- [Immunohistochemistry](#)
- [Immunofluorescence](#)
- [Immunoprecipitation](#)
- [Flow Cytometry](#)
- [Cell Culture](#)

SARS Coronavirus Spike Glycoprotein Antibody - Citations

- [Mucosal immunization with surface-displayed severe acute respiratory syndrome coronavirus spike protein on Lactobacillus casei induces neutralizing antibodies in mice.](#)
- [Coronaviral hypothetical and structural proteins were found in the intestinal surface enterocytes and pneumocytes of severe acute respiratory syndrome \(SARS\).](#)
- [Severe acute respiratory syndrome \(SARS\) S protein production in plants: development of recombinant vaccine.](#)
- [Severe acute respiratory syndrome coronavirus 3a protein is a viral structural protein.](#)
- [Resolution of primary severe acute respiratory syndrome-associated coronavirus infection requires Stat1.](#)
- [Synthesis and characterization of a native, oligomeric form of recombinant severe acute respiratory syndrome coronavirus spike glycoprotein.](#)