

MMP11 Antibody (C-term)
Purified Rabbit Polyclonal Antibody (Pab)
Catalog # AP6195a

Specification

MMP11 Antibody (C-term) - Product Information

Application	WB,E
Primary Accession	P24347
Other Accession	NP_005931
Reactivity	Human, Mouse
Host	Rabbit
Clonality	Polyclonal
Isotype	Rabbit Ig
Calculated MW	54590
Antigen Region	398-426

MMP11 Antibody (C-term) - Additional Information

Gene ID 4320

Other Names

Stromelysin-3, SL-3, ST3, 3424-, Matrix metalloproteinase-11, MMP-11, MMP11, STMY3

Target/Specificity

This MMP11 antibody is generated from rabbits immunized with a KLH conjugated synthetic peptide between 398-426 amino acids from the C-terminal region of human MMP11.

Dilution

WB~~1:1000

Format

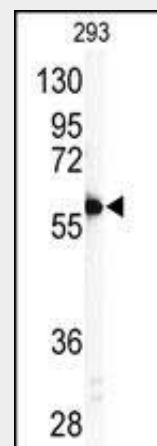
Purified polyclonal antibody supplied in PBS with 0.09% (W/V) sodium azide. This antibody is prepared by Saturated Ammonium Sulfate (SAS) precipitation followed by dialysis against PBS.

Storage

Maintain refrigerated at 2-8°C for up to 2 weeks. For long term storage store at -20°C in small aliquots to prevent freeze-thaw cycles.

Precautions

MMP11 Antibody (C-term) is for research



Western blot analysis of anti-MMP11 Antibody (C-term)(Cat.#AP6195a) in 293 cell line lysates (35ug/lane). MMP11(arrow) was detected using the purified Pab.

MMP11 Antibody (C-term) - Background

Proteins of the matrix metalloproteinase (MMP) family are involved in the breakdown of extracellular matrix in normal physiological processes, such as embryonic development, reproduction, and tissue remodeling, as well as in disease processes, such as arthritis and metastasis. Most MMPs are secreted as inactive proproteins which are activated when cleaved by extracellular proteinases. MMP11 may play an important role in the progression of epithelial malignancies. It is specifically expressed in stromal cells of breast carcinomas.

MMP11 Antibody (C-term) - References

Anglard, P., et al., J. Biol. Chem. 270(35):20337-20344 (1995).
Basset, P., et al., Nature 348(6303):699-704 (1990).

use only and not for use in diagnostic or therapeutic procedures.

MMP11 Antibody (C-term) - Protein Information

Name MMP11

Synonyms STMY3

Function

May play an important role in the progression of epithelial malignancies.

Cellular Location

Secreted, extracellular space, extracellular matrix

Tissue Location

Specifically expressed in stromal cells of breast carcinomas

MMP11 Antibody (C-term) - Protocols

Provided below are standard protocols that you may find useful for product applications.

- [Western Blot](#)
- [Blocking Peptides](#)
- [Dot Blot](#)
- [Immunohistochemistry](#)
- [Immunofluorescence](#)
- [Immunoprecipitation](#)
- [Flow Cytometry](#)
- [Cell Culture](#)