

**MMP20 Antibody (Center)**  
**Purified Rabbit Polyclonal Antibody (Pab)**  
**Catalog # AP6203a**

**Specification**

**MMP20 Antibody (Center) - Product Information**

Application	WB, IHC-P,E
Primary Accession	<a href="#">O60882</a>
Other Accession	<a href="#">NP_004762</a>
Reactivity	Human
Host	Rabbit
Clonality	Polyclonal
Isotype	Rabbit Ig
Antigen Region	233-262

**MMP20 Antibody (Center) - Additional Information**

**Gene ID** 9313

**Other Names**

Matrix metalloproteinase-20, MMP-20, 3424-, Enamel metalloproteinase, Enamelysin, MMP20

**Target/Specificity**

This MMP20 antibody is generated from rabbits immunized with a KLH conjugated synthetic peptide between 233-262 amino acids from the Central region of human MMP20.

**Dilution**

WB~~1:1000  
IHC-P~~1:50~100

**Format**

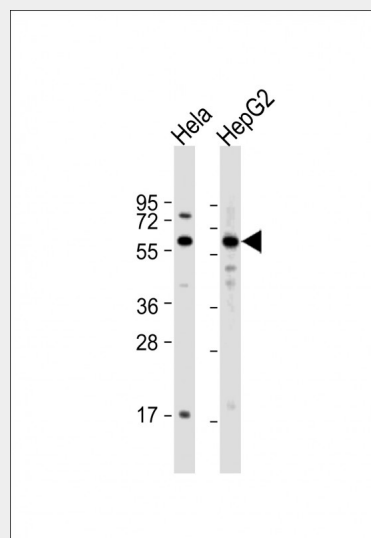
Purified polyclonal antibody supplied in PBS with 0.09% (W/V) sodium azide. This antibody is prepared by Saturated Ammonium Sulfate (SAS) precipitation followed by dialysis against PBS.

**Storage**

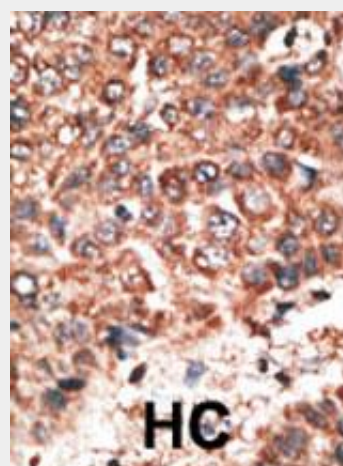
Maintain refrigerated at 2-8°C for up to 2 weeks. For long term storage store at -20°C in small aliquots to prevent freeze-thaw cycles.

**Precautions**

MMP20 Antibody (Center) is for research



All lanes : Anti-MMP20 Antibody (Y248) at 1:1000 dilution  
Lane 1: HeLa whole cell lysate  
Lane 2: HepG2 whole cell lysate  
Lysates/proteins at 20 µg per lane.  
Secondary Goat Anti-Rabbit IgG, (H+L), Peroxidase conjugated at 1/10000 dilution.  
Predicted band size : 54 kDa  
Blocking/Dilution buffer: 5% NFDM/TBST.



Formalin-fixed and paraffin-embedded human cancer tissue reacted with the primary antibody, which was peroxidase-conjugated to the secondary antibody, followed by DAB staining. This data

use only and not for use in diagnostic or therapeutic procedures.

demonstrates the use of this antibody for immunohistochemistry; clinical relevance has not been evaluated. BC = breast carcinoma; HC = hepatocarcinoma.

#### **MMP20 Antibody (Center) - Protein Information**

**Name** MMP20

##### **Function**

Degrades amelogenin, the major protein component of the enamel matrix and two of the macromolecules characterizing the cartilage extracellular matrix: aggrecan and the cartilage oligomeric matrix protein (COMP). May play a central role in tooth enamel formation. Cleaves aggrecan at the '360-Asn-I-Phe-361' site.

##### **Cellular Location**

Secreted, extracellular space, extracellular matrix

##### **Tissue Location**

Expressed specifically in the enamel organ.

#### **MMP20 Antibody (Center) - Background**

MMP20 degrades amelogenin, the major protein component of the enamel matrix, as well as two of the macromolecules characterizing the cartilage extracellular matrix: aggrecan and the cartilage oligomeric matrix protein (COMP). MMP20 may play a central role in tooth enamel formation.

#### **MMP20 Antibody (Center) - References**

Llano, E., et al., Biochemistry 36(49):15101-15108 (1997).  
Stracke, J.O., et al., FEBS Lett. 478 (1-2), 52-56 (2000).

#### **MMP20 Antibody (Center) - Protocols**

Provided below are standard protocols that you may find useful for product applications.

- [Western Blot](#)
- [Blocking Peptides](#)
- [Dot Blot](#)
- [Immunohistochemistry](#)
- [Immunofluorescence](#)
- [Immunoprecipitation](#)
- [Flow Cytometry](#)
- [Cell Culture](#)