

GRB2 Antibody (Center)
Purified Rabbit Polyclonal Antibody (Pab)
Catalog # AP6283C

Specification

GRB2 Antibody (Center) - Product Information

| | |
|-------------------|--|
| Application | WB, IHC-P,E |
| Primary Accession | P62993 |
| Other Accession | P62994 , Q60631 , Q6GPJ9 , P87379 |
| Reactivity | Human |
| Predicted | Xenopus, Mouse, Rat |
| Host | Rabbit |
| Clonality | Polyclonal |
| Isotype | Rabbit Ig |
| Calculated MW | 25206 |
| Antigen Region | 89-118 |

GRB2 Antibody (Center) - Additional Information

Gene ID 2885

Other Names

Growth factor receptor-bound protein 2,
Adapter protein GRB2, Protein Ash,
SH2/SH3 adapter GRB2, GRB2, ASH

Target/Specificity

This GRB2 antibody is generated from rabbits immunized with a KLH conjugated synthetic peptide between 89-118 amino acids from the Central region of human GRB2.

Dilution

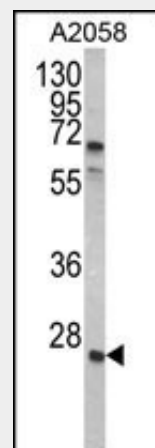
WB~~1:1000
IHC-P~~1:50~100

Format

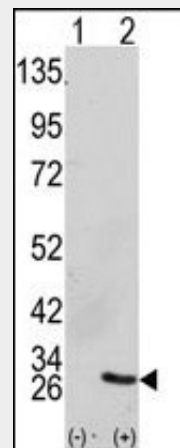
Purified polyclonal antibody supplied in PBS with 0.09% (W/V) sodium azide. This antibody is prepared by Saturated Ammonium Sulfate (SAS) precipitation followed by dialysis against PBS.

Storage

Maintain refrigerated at 2-8°C for up to 2 weeks. For long term storage store at -20°C in small aliquots to prevent freeze-thaw cycles.



Western blot analysis of GRB2 Antibody (Center) (Cat. #AP6283c) in A2058 cell line lysates (35ug/lane). GRB2 (arrow) was detected using the purified Pab.



Western blot analysis of GRB2 (arrow) using GRB2 Antibody (Center) (Cat.#AP6283c). 293 cell lysates (2 ug/lane) either nontransfected (Lane 1) or transiently transfected with the GRB2 gene (Lane 2) (Origene Technologies).

Precautions

GRB2 Antibody (Center) is for research use only and not for use in diagnostic or therapeutic procedures.

GRB2 Antibody (Center) - Protein Information

Name GRB2

Synonyms ASH

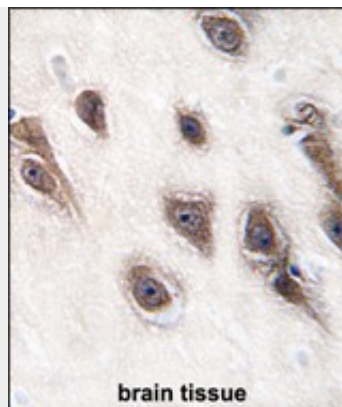
Function

Adapter protein that provides a critical link between cell surface growth factor receptors and the Ras signaling pathway.

Cellular Location

Nucleus. Cytoplasm. Endosome Golgi apparatus

{ECO:0000250|UniProtKB:Q60631}



Formalin-fixed and paraffin-embedded human brain tissue reacted with GRB2 antibody (Center), which was peroxidase-conjugated to the secondary antibody, followed by DAB staining. This data demonstrates the use of this antibody for immunohistochemistry; clinical relevance has not been evaluated.

GRB2 Antibody (Center) - Protocols

Provided below are standard protocols that you may find useful for product applications.

- [Western Blot](#)
- [Blocking Peptides](#)
- [Dot Blot](#)
- [Immunohistochemistry](#)
- [Immunofluorescence](#)
- [Immunoprecipitation](#)
- [Flow Cytometry](#)
- [Cell Culture](#)

GRB2 Antibody (Center) - Background

GRB2 binds the epidermal growth factor receptor and contains one SH2 domain and two SH3 domains. Its two SH3 domains direct complex formation with proline-rich regions of other proteins, and its SH2 domain binds tyrosine phosphorylated sequences.

GRB2 Antibody (Center) - References

- Kondo,A., J. Biol. Chem. 283 (3), 1428-1436 (2008)
Morimatsu,M., Proc. Natl. Acad. Sci. U.S.A. 104 (46), 18013-18018 (2007)
Martinez,N., Cell. Signal. 19 (11), 2277-2285 (2007)