

**GRB2 Antibody (Y209)**  
**Affinity Purified Rabbit Polyclonal Antibody (Pab)**  
**Catalog # AP6283a**

**Specification**

**GRB2 Antibody (Y209) - Product Information**

Application	<b>WB, IHC-P,E</b>
Primary Accession	<a href="#">P62993</a>
Other Accession	<a href="#">P62994</a> , <a href="#">Q60631</a> , <a href="#">Q07883</a> , <a href="#">Q6GPJ9</a> , <a href="#">P87379</a>
Reactivity Predicted	<b>Human</b> <b>Xenopus,</b> <b>Chicken, Mouse,</b> <b>Rat</b>
Host	<b>Rabbit</b>
Clonality	<b>Polyclonal</b>
Isotype	<b>Rabbit Ig</b>
Calculated MW	<b>25206</b>
Antigen Region	<b>187-216</b>

**GRB2 Antibody (Y209) - Additional Information**

**Gene ID** 2885

**Other Names**

Growth factor receptor-bound protein 2,  
Adapter protein GRB2, Protein Ash,  
SH2/SH3 adapter GRB2, GRB2, ASH

**Target/Specificity**

This GRB2 antibody is generated from rabbits immunized with a KLH conjugated synthetic peptide between 187-216 amino acids from human GRB2.

**Dilution**

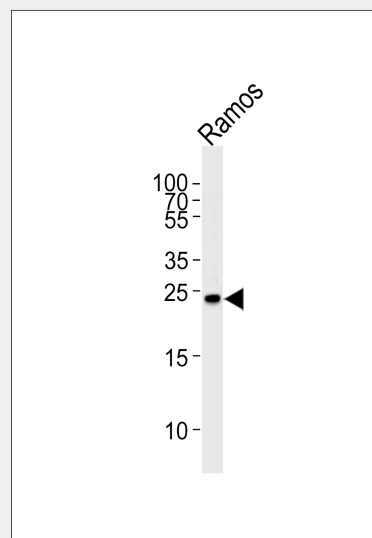
WB~~1:1000  
IHC-P~~1:10~50

**Format**

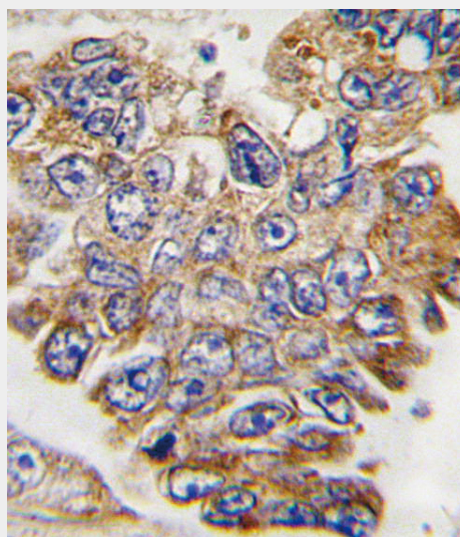
Purified polyclonal antibody supplied in PBS with 0.09% (W/V) sodium azide. This antibody is purified through a protein A column, followed by peptide affinity purification.

**Storage**

Maintain refrigerated at 2-8°C for up to 2 weeks. For long term storage store at -20°C in small aliquots to prevent freeze-thaw



Western blot analysis of lysate from Ramos cell line, using GRB2 Antibody (pY209)(Cat. #AP6283a). AP6283a was diluted at 1:1000. A goat anti-rabbit IgG H&L(HRP) at 1:5000 dilution was used as the secondary antibody. Lysate at 35ug.



Formalin-fixed and paraffin-embedded human lung carcinoma tissue reacted with GRB2 Antibody (Y209), which was peroxidase-conjugated to the secondary antibody, followed by DAB staining. This data

cycles.

**Precautions**

GRB2 Antibody (Y209) is for research use only and not for use in diagnostic or therapeutic procedures.

**GRB2 Antibody (Y209) - Protein Information**

**Name** GRB2

**Synonyms** ASH

**Function**

Adapter protein that provides a critical link between cell surface growth factor receptors and the Ras signaling pathway.

**Cellular Location**

Nucleus. Cytoplasm. Endosome Golgi apparatus  
{ECO:0000250|UniProtKB:Q60631}

demonstrates the use of this antibody for immunohistochemistry; clinical relevance has not been evaluated.

**GRB2 Antibody (Y209) - Background**

GRB2 binds the epidermal growth factor receptor and contains one SH2 domain and two SH3 domains. Its two SH3 domains direct complex formation with proline-rich regions of other proteins, and its SH2 domain binds tyrosine phosphorylated sequences. This gene is similar to the Sem5 gene of C.elegans, which is involved in the signal transduction pathway.

**GRB2 Antibody (Y209) - References**

Kondo,A., J. Biol. Chem. 283 (3), 1428-1436 (2008)  
Morimatsu,M., Proc. Natl. Acad. Sci. U.S.A. 104 (46), 18013-18018 (2007)  
Martinez,N., Cell. Signal. 19 (11), 2277-2285 (2007)

**GRB2 Antibody (Y209) - Protocols**

Provided below are standard protocols that you may find useful for product applications.

- [Western Blot](#)
- [Blocking Peptides](#)
- [Dot Blot](#)
- [Immunohistochemistry](#)
- [Immunofluorescence](#)
- [Immunoprecipitation](#)
- [Flow Cytometry](#)
- [Cell Culture](#)