

Parp12 Antibody (C-term)
Purified Rabbit Polyclonal Antibody (Pab)
Catalog # AP6298b

Specification

Parp12 Antibody (C-term) - Product Information

Application	WB,E
Primary Accession	Q8BZ20
Other Accession	NP_766481
Reactivity	Human
Host	Rabbit
Clonality	Polyclonal
Isotype	Rabbit Ig
Antigen Region	454-483

Parp12 Antibody (C-term) - Additional Information

Gene ID 243771

Other Names

Poly [ADP-ribose] polymerase 12, PARP-12, ADP-ribosyltransferase diphtheria toxin-like 12, ARTD12, Zinc finger CCCH domain-containing protein 1, Parp12, Zc3hdc1

Target/Specificity

This Parp12 antibody is generated from rabbits immunized with a KLH conjugated synthetic peptide between 454-483 amino acids from the C-terminal region of mouse Parp12.

Dilution

WB~~1:1000

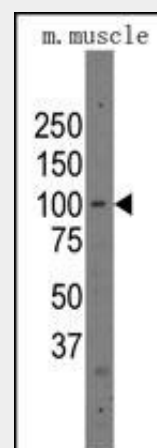
Format

Purified polyclonal antibody supplied in PBS with 0.09% (W/V) sodium azide. This antibody is prepared by Saturated Ammonium Sulfate (SAS) precipitation followed by dialysis against PBS.

Storage

Maintain refrigerated at 2-8°C for up to 2 weeks. For long term storage store at -20°C in small aliquots to prevent freeze-thaw cycles.

Precautions



Western blot analysis of anti-Parp12 Pab (RB14194) in mouse muscle tissue lysates (35ug/lane). Parp12 (arrow) was detected using the purified Pab.

Parp12 Antibody (C-term) - Background

Poly(ADP-ribosyl)ation is an immediate DNA-damage-dependent post-translational modification of histones and other nuclear proteins that contributes to the survival of injured proliferating cells. Poly(ADP-ribose) polymerases (PARPs) now constitute a large family of 18 proteins, encoded by different genes and displaying a conserved catalytic domain in which PARP-1 (113 kDa), the founding member, and PARP-2 (62 kDa) are so far the sole enzymes whose catalytic activity has been shown to be immediately stimulated by DNA strand breaks. A large repertoire of sequences encoding novel PARPs now extends considerably the field of poly(ADP-ribosyl)ation reactions to various aspects of the cell biology including cell proliferation and cell death. Some of these new members interact with each other, share common partners and common subcellular localizations suggesting possible fine tuning in the regulation of this post-translational modification of proteins.

Parp12 Antibody (C-term) - References

Parp12 Antibody (C-term) is for research use only and not for use in diagnostic or therapeutic procedures.

Bailey,P.J., Exp. Cell Res. 312 (16), 3108-3119 (2006)

Katoh,M., Int. J. Oncol. 23 (2), 541-547 (2003)

Parp12 Antibody (C-term) - Protein Information

Name Parp12

{ECO:0000312|MGI:MGI:2143990}

Synonyms Zc3hdc1

Function

Mono-ADP-ribosyltransferase that mediates mono-ADP- ribosylation of target proteins.

Cellular Location

Nucleus.

Parp12 Antibody (C-term) - Protocols

Provided below are standard protocols that you may find useful for product applications.

- [Western Blot](#)
- [Blocking Peptides](#)
- [Dot Blot](#)
- [Immunohistochemistry](#)
- [Immunofluorescence](#)
- [Immunoprecipitation](#)
- [Flow Cytometry](#)
- [Cell Culture](#)

Parp12 Antibody (C-term) - Citations

- [Scarless fetal mouse wound healing may initiate apoptosis through caspase 7 and cleavage of PARP.](#)