

Cleaved-Plasminogen HC A short form (V98) Polyclonal Antibody

Catalog # AP63178

Specification

Cleaved-Plasminogen HC A short form (V98) Polyclonal Antibody - Product Information

Application	WB
Primary Accession	P00747
Reactivity	Human, Mouse, Rat
Host	Rabbit
Clonality	Polyclonal

Cleaved-Plasminogen HC A short form (V98) Polyclonal Antibody - Additional Information

Gene ID 5340

Other Names

PLG; Plasminogen

Dilution

WB~~Western Blot: 1/500 - 1/2000. ELISA:
1/10000. Not yet tested in other
applications.

Format

Liquid in PBS containing 50% glycerol, 0.5%
BSA and 0.02% sodium azide.

Storage Conditions

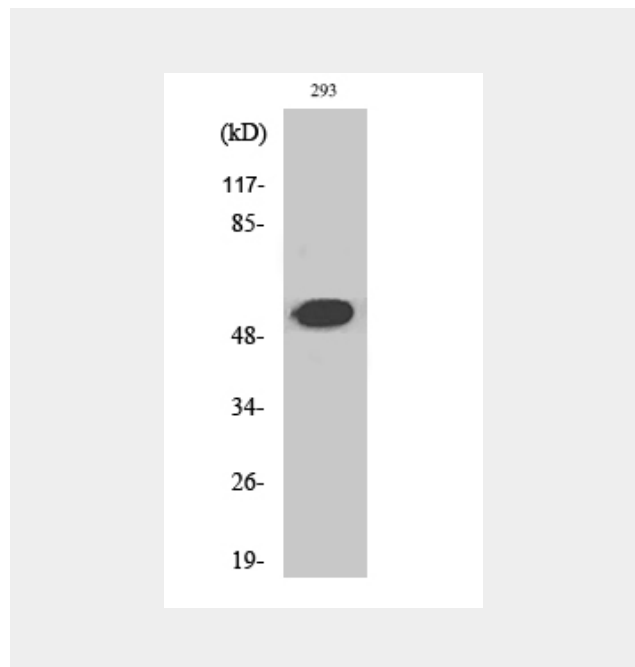
-20°C

Cleaved-Plasminogen HC A short form (V98) Polyclonal Antibody - Protein Information

Name PLG

Function

Plasmin dissolves the fibrin of blood clots and acts as a proteolytic factor in a variety of other processes including embryonic development, tissue remodeling, tumor invasion, and inflammation. In ovulation, weakens the walls of the Graafian follicle. It activates the urokinase-type plasminogen activator, collagenases and several complement zymogens, such as C1 and C5. Cleavage of fibronectin and laminin leads to cell detachment and apoptosis. Also cleaves



Cleaved-Plasminogen HC A short form (V98) Polyclonal Antibody - Background

Plasmin dissolves the fibrin of blood clots and acts as a proteolytic factor in a variety of other processes including embryonic development, tissue remodeling, tumor invasion, and inflammation. In ovulation, weakens the walls of the Graafian follicle. It activates the urokinase-type plasminogen activator, collagenases and several complement zymogens, such as C1 and C5. Cleavage of fibronectin and laminin leads to cell detachment and apoptosis. Also cleaves fibrin, thrombospondin and von Willebrand factor. Its role in tissue remodeling and tumor invasion may be modulated by CSPG4. Binds to cells.

fibrin, thrombospondin and von Willebrand factor. Its role in tissue remodeling and tumor invasion may be modulated by CSPG4. Binds to cells.

Cellular Location

Secreted. Note=Locates to the cell surface where it is proteolytically cleaved to produce the active plasmin. Interaction with HRG tethers it to the cell surface

Tissue Location

Present in plasma and many other extracellular fluids. It is synthesized in the liver

Cleaved-Plasminogen HC A short form (V98) Polyclonal Antibody - Protocols

Provided below are standard protocols that you may find useful for product applications.

- [Western Blot](#)
- [Blocking Peptides](#)
- [Dot Blot](#)
- [Immunohistochemistry](#)
- [Immunofluorescence](#)
- [Immunoprecipitation](#)
- [Flow Cytometry](#)
- [Cell Culture](#)