

DPP8 Antibody (C-term)
Purified Rabbit Polyclonal Antibody (Pab)
Catalog # AP6506b

Specification

DPP8 Antibody (C-term) - Product Information

Application	WB, IHC-P, FC,E
Primary Accession	Q6V1X1
Other Accession	Q80YA7
Reactivity	Human
Predicted	Mouse
Host	Rabbit
Clonality	Polyclonal
Isotype	Rabbit Ig
Calculated MW	103358
Antigen Region	846-876

DPP8 Antibody (C-term) - Additional Information

Gene ID 54878

Other Names

Dipeptidyl peptidase 8, DP8, Dipeptidyl peptidase IV-related protein 1, DPRP-1, Dipeptidyl peptidase VIII, DPP VIII, Prolyl dipeptidase DPP8, DPP8, DPRP1

Target/Specificity

This DPP8 antibody is generated from rabbits immunized with a KLH conjugated synthetic peptide between 846-876 amino acids from the C-terminal region of human DPP8.

Dilution

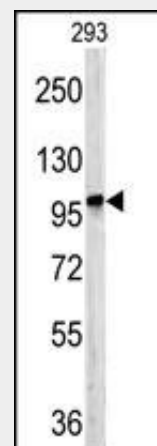
WB~~1:1000
IHC-P~~1:50~100
FC~~1:10~50

Format

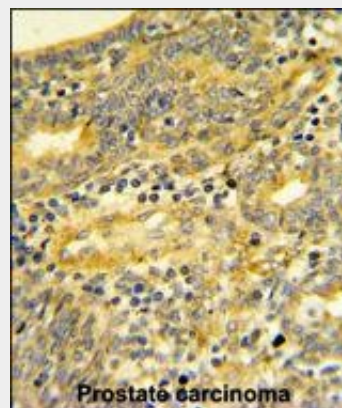
Purified polyclonal antibody supplied in PBS with 0.09% (W/V) sodium azide. This antibody is prepared by Saturated Ammonium Sulfate (SAS) precipitation followed by dialysis against PBS.

Storage

Maintain refrigerated at 2-8°C for up to 2 weeks. For long term storage store at -20°C in small aliquots to prevent freeze-thaw cycles.



Western blot analysis of DPP8 antibody (C-term) (Cat.# AP6506b) in 293 cell line lysates (35ug/lane). DPP8 (arrow) was detected using the purified Pab.



DPP8 Antibody (C-term) (Cat.# AP6506b) IHC analysis in formalin fixed and paraffin embedded human Prostate carcinoma followed by peroxidase conjugation of the secondary antibody and DAB staining. This data demonstrates the use of the DPP8 Antibody (C-term) for immunohistochemistry. Clinical relevance has not been evaluated.

Precautions

DPP8 Antibody (C-term) is for research use only and not for use in diagnostic or therapeutic procedures.

DPP8 Antibody (C-term) - Protein Information

Name DPP8

{ECO:0000303|PubMed:11012666,
ECO:0000312|HGNC:HGNC:16490}

Function

Dipeptidyl peptidase that cleaves off N-terminal dipeptides from proteins having a Pro or Ala residue at position 2 (PubMed:<a href="http://www.uniprot.org/citations/11012666"

target="_blank">11012666,</p>
</div>
<div data-bbox=

DPP8 Antibody (C-term) - Protocols

Provided below are standard protocols that you may find useful for product applications.

- [Western Blot](#)
- [Blocking Peptides](#)
- [Dot Blot](#)
- [Immunohistochemistry](#)
- [Immunofluorescence](#)
- [Immunoprecipitation](#)
- [Flow Cytometry](#)
- [Cell Culture](#)