

**TTR Antibody (Center)**  
**Purified Rabbit Polyclonal Antibody (Pab)**  
**Catalog # AP6698C**

**Specification**

**TTR Antibody (Center) - Product Information**

Application	<b>WB, IHC-P, FC,E</b>
Primary Accession	<a href="#">P02766</a>
Other Accession	<a href="#">O46375</a>
Reactivity	<b>Human</b>
Predicted	<b>Bovine</b>
Host	<b>Rabbit</b>
Clonality	<b>Polyclonal</b>
Isotype	<b>Rabbit Ig</b>
Calculated MW	<b>15887</b>
Antigen Region	<b>47-74</b>

**TTR Antibody (Center) - Additional Information**

**Gene ID** 7276

**Other Names**

Transthyretin, ATTR, Prealbumin, TBPA, TTR, PALB

**Target/Specificity**

This TTR antibody is generated from rabbits immunized with a KLH conjugated synthetic peptide between 47-74 amino acids from the Central region of human TTR.

**Dilution**

WB~~1:1000  
IHC-P~~1:10~50  
FC~~1:10~50

**Format**

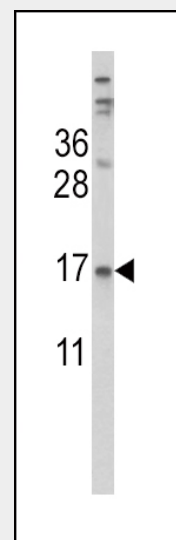
Purified polyclonal antibody supplied in PBS with 0.09% (W/V) sodium azide. This antibody is prepared by Saturated Ammonium Sulfate (SAS) precipitation followed by dialysis against PBS.

**Storage**

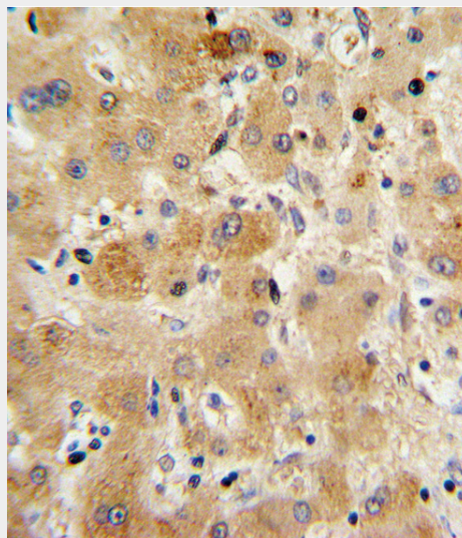
Maintain refrigerated at 2-8°C for up to 2 weeks. For long term storage store at -20°C in small aliquots to prevent freeze-thaw cycles.

**Precautions**

TTR Antibody (Center) is for research use



Western blot analysis of TTR Antibody (Center) (Cat. #AP6698c) in HepG2 cell line lysates (35ug/lane). TTR (arrow) was detected using the purified Pab.



Formalin-fixed and paraffin-embedded human hepatocarcinoma with TTR Antibody (Center), which was peroxidase-conjugated to the secondary antibody, followed by DAB staining. This data demonstrates the use of this antibody for immunohistochemistry; clinical relevance has not been evaluated.

only and not for use in diagnostic or therapeutic procedures.

#### TTR Antibody (Center) - Protein Information

**Name** TTR

**Synonyms** PALB

#### Function

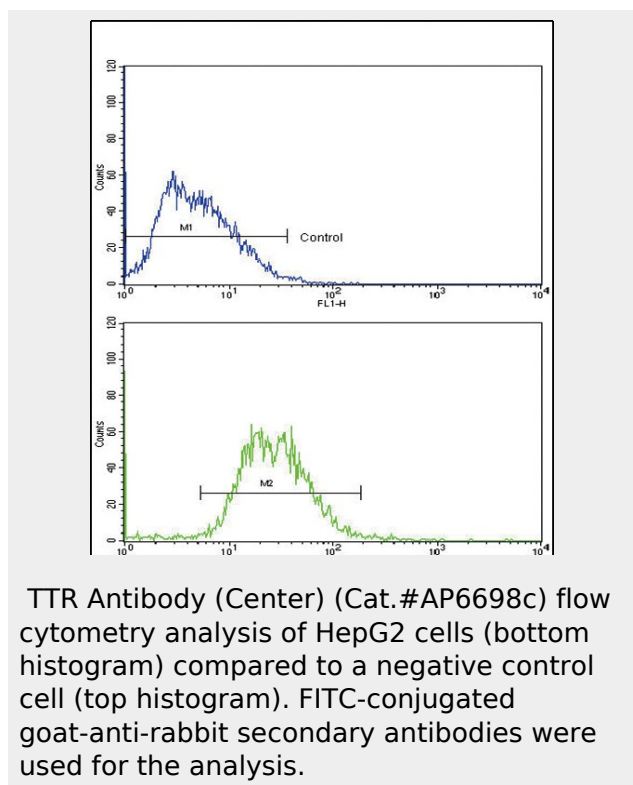
Thyroid hormone-binding protein. Probably transports thyroxine from the bloodstream to the brain.

#### Cellular Location

Secreted. Cytoplasm.

#### Tissue Location

Detected in serum and cerebrospinal fluid (at protein level). Highly expressed in choroid plexus epithelial cells Detected in retina pigment epithelium and liver



#### TTR Antibody (Center) - Protocols

Provided below are standard protocols that you may find useful for product applications.

- [Western Blot](#)
- [Blocking Peptides](#)
- [Dot Blot](#)
- [Immunohistochemistry](#)
- [Immunofluorescence](#)
- [Immunoprecipitation](#)
- [Flow Cytometry](#)
- [Cell Culture](#)

#### TTR Antibody (Center) - Background

Transthyretin, one of the three prealbumins including alpha-1-antitrypsin, transthyretin and orosomucoid. Transthyretin is a carrier protein; it transports thyroid hormones in the plasma and cerebrospinal fluid, and also transports retinol (vitamin A) in the plasma. The protein consists of a tetramer of identical subunits. More than 80 different mutations in this gene have been reported; most mutations are related to amyloid deposition, affecting predominantly peripheral nerve and/or the heart, and a small portion of the gene mutations is non-amyloidogenic. The diseases caused by mutations include amyloidotic polyneuropathy, euthyroid hyperthyroxinaemia, amyloidotic vitreous opacities, cardiomyopathy, oculoleptomeningeal amyloidosis, meningocerebrovascular amyloidosis, carpal tunnel syndrome, etc.

#### TTR Antibody (Center) - References

Lee,K.W., Biochem. Biophys. Res. Commun. 388 (2), 256-260 (2009)