

**KRT10 Antibody (Center)**  
**Purified Rabbit Polyclonal Antibody (Pab)**  
**Catalog # AP6704c**

**Specification**

**KRT10 Antibody (Center) - Product Information**

Application	<b>WB, IHC-P, FC,E</b>
Primary Accession	<a href="#">P13645</a>
Other Accession	<a href="#">Q6IFW6</a>
Reactivity	<b>Human</b>
Predicted	<b>Rat</b>
Host	<b>Rabbit</b>
Clonality	<b>Polyclonal</b>
Isotype	<b>Rabbit Ig</b>
Calculated MW	<b>58827</b>
Antigen Region	<b>318-346</b>

**KRT10 Antibody (Center) - Additional Information**

**Gene ID** 3858

**Other Names**

Keratin, type I cytoskeletal 10,  
Cytokeratin-10, CK-10, Keratin-10, K10,  
KRT10, KPP

**Target/Specificity**

This KRT10 antibody is generated from rabbits immunized with a KLH conjugated synthetic peptide between 318-346 amino acids from the Central region of human KRT10.

**Dilution**

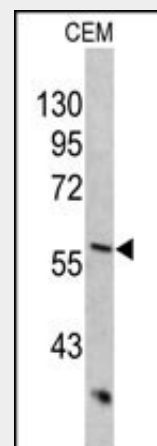
WB~~1:1000  
IHC-P~~1:50~100  
FC~~1:10~50

**Format**

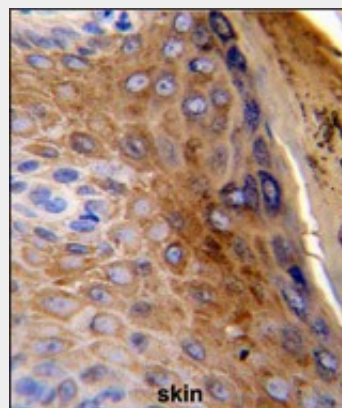
Purified polyclonal antibody supplied in PBS with 0.09% (W/V) sodium azide. This antibody is prepared by Saturated Ammonium Sulfate (SAS) precipitation followed by dialysis against PBS.

**Storage**

Maintain refrigerated at 2-8°C for up to 2 weeks. For long term storage store at -20°C in small aliquots to prevent freeze-thaw cycles.



Western blot analysis of KRT10 antibody (Center) (Cat. #AP6704c) in CEM cell line lysates (35ug/lane). KRT10 (arrow) was detected using the purified Pab.



Formalin-fixed and paraffin-embedded human skin reacted with KRT10 Antibody (Center), which was peroxidase-conjugated to the secondary antibody, followed by DAB staining. This data demonstrates the use of this antibody for immunohistochemistry; clinical relevance has not been evaluated.

### Precautions

KRT10 Antibody (Center) is for research use only and not for use in diagnostic or therapeutic procedures.

### KRT10 Antibody (Center) - Protein Information

**Name** KRT10

**Synonyms** KPP

### Function

Plays a role in the establishment of the epidermal barrier on plantar skin.

### Cellular Location

Secreted, extracellular space. Cell surface.  
Note=Localized on the surface of desquamated nasal epithelial cells (PubMed:12427098). Localized on the surface of lung cell lines (PubMed:19627498)

### Tissue Location

Seen in all suprabasal cell layers including stratum corneum. Expressed on the surface of lung cell lines (PubMed:19627498).

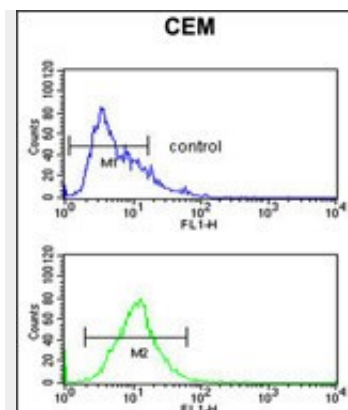
### KRT10 Antibody (Center) - Protocols

Provided below are standard protocols that you may find useful for product applications.

- [Western Blot](#)
- [Blocking Peptides](#)
- [Dot Blot](#)
- [Immunohistochemistry](#)
- [Immunofluorescence](#)
- [Immunoprecipitation](#)
- [Flow Cytometry](#)
- [Cell Culture](#)

### KRT10 Antibody (Center) - Citations

- [Differential miRNA expression profiles in human keratinocytes in response to protein kinase C inhibitor.](#)



KRT10 Antibody (Center) (Cat. #AP6704c) flow cytometric analysis of CEM cells (bottom histogram) compared to a negative control cell (top histogram). FITC-conjugated goat-anti-rabbit secondary antibodies were used for the analysis.

### KRT10 Antibody (Center) - Background

KRT10 is a member of the type I (acidic) cytokeratin family, which belongs to the superfamily of intermediate filament (IF) proteins. Keratins are heteropolymeric structural proteins which form the intermediate filament. These filaments, along with actin microfilaments and microtubules, compose the cytoskeleton of epithelial cells. Mutations in its gene are associated with epidermolytic hyperkeratosis.

### KRT10 Antibody (Center) - References

Morais,P., Eur J Dermatol 19 (4), 333-336 (2009)  
Barcelos,A.C., J. Cutan. Pathol. 36 (6), 647-654 (2009)