

## Rad17 (phospho Ser645) Polyclonal Antibody Catalog # AP67223

### Specification

#### Rad17 (phospho Ser645) Polyclonal Antibody - Product Information

Application	<b>WB</b>
Primary Accession	<a href="#">O75943</a>
Reactivity	<b>Human, Mouse</b>
Host	<b>Rabbit</b>
Clonality	<b>Polyclonal</b>

#### Rad17 (phospho Ser645) Polyclonal Antibody - Additional Information

**Gene ID** 5884

#### Other Names

RAD17; R24L; Cell cycle checkpoint protein  
RAD17; hRad17; RF-C/activator 1 homolog

#### Dilution

WB~~Western Blot: 1/500 - 1/2000. ELISA:  
1/5000. Not yet tested in other applications.

#### Format

Liquid in PBS containing 50% glycerol, 0.5%  
BSA and 0.02% sodium azide.

#### Storage Conditions

-20°C

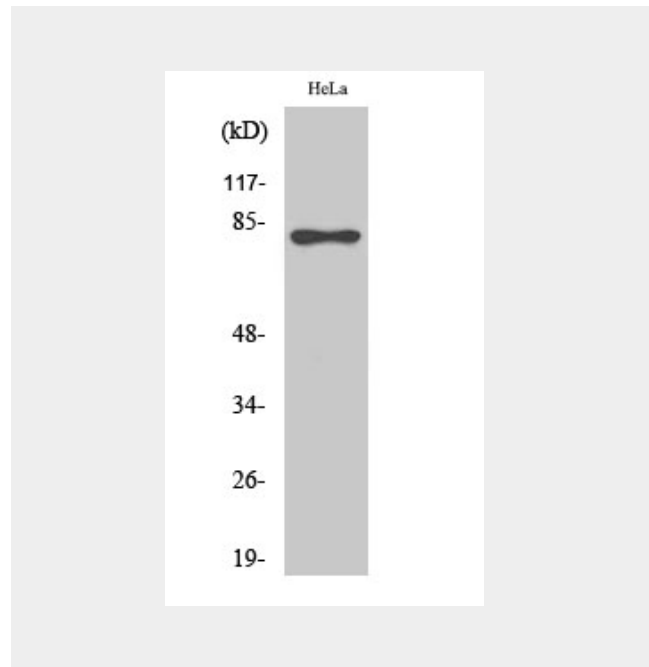
#### Rad17 (phospho Ser645) Polyclonal Antibody - Protein Information

**Name** RAD17

**Synonyms** R24L

#### Function

Essential for sustained cell growth,  
maintenance of chromosomal stability, and  
ATR-dependent checkpoint activation upon  
DNA damage. Has a weak ATPase activity  
required for binding to chromatin.  
Participates in the recruitment of the  
RAD1-RAD9-HUS1 complex and RHNO1  
onto chromatin, and in CHEK1 activation.  
May also serve as a sensor of DNA  
replication progression, and may be



#### Rad17 (phospho Ser645) Polyclonal Antibody - Background

Essential for sustained cell growth,  
maintenance of chromosomal stability, and  
ATR-dependent checkpoint activation upon  
DNA damage. Has a weak ATPase activity  
required for binding to chromatin. Participates  
in the recruitment of the RAD1-RAD9- HUS1  
complex and RHNO1 onto chromatin, and in  
CHEK1 activation. May also serve as a sensor  
of DNA replication progression, and may be  
involved in homologous recombination.

involved in homologous recombination.

**Cellular Location**

Nucleus. Note=Phosphorylated form redistributes to discrete nuclear foci upon DNA damage

**Tissue Location**

Overexpressed in various cancer cell lines and in colon carcinoma (at protein level). Isoform 2 and isoform 3 are the most abundant isoforms in non irradiated cells (at protein level) Ubiquitous at low levels. Highly expressed in testis, where it is expressed within the germinal epithelium of the seminiferous tubuli Weakly expressed in seminomas (testicular tumors)

**Rad17 (phospho Ser645) Polyclonal Antibody - Protocols**

Provided below are standard protocols that you may find useful for product applications.

- [Western Blot](#)
- [Blocking Peptides](#)
- [Dot Blot](#)
- [Immunohistochemistry](#)
- [Immunofluorescence](#)
- [Immunoprecipitation](#)
- [Flow Cytometry](#)
- [Cell Culture](#)