

## Topo II $\alpha$ (phospho Thr1343) Polyclonal Antibody

Catalog # AP67378

### Specification

#### Topo II $\alpha$ (phospho Thr1343) Polyclonal Antibody - Product Information

Application	WB
Primary Accession	<a href="#">P11388</a>
Reactivity	Human
Host	Rabbit
Clonality	Polyclonal

#### Topo II $\alpha$ (phospho Thr1343) Polyclonal Antibody - Additional Information

Gene ID 7153

#### Other Names

TOP2A; TOP2; DNA topoisomerase 2- $\alpha$ ;  
DNA topoisomerase II;  $\alpha$  isozyme

#### Dilution

WB~Western Blot: 1/500 - 1/2000. ELISA:  
1/5000. Not yet tested in other applications.

#### Format

Liquid in PBS containing 50% glycerol, 0.5%  
BSA and 0.02% sodium azide.

#### Storage Conditions

-20°C

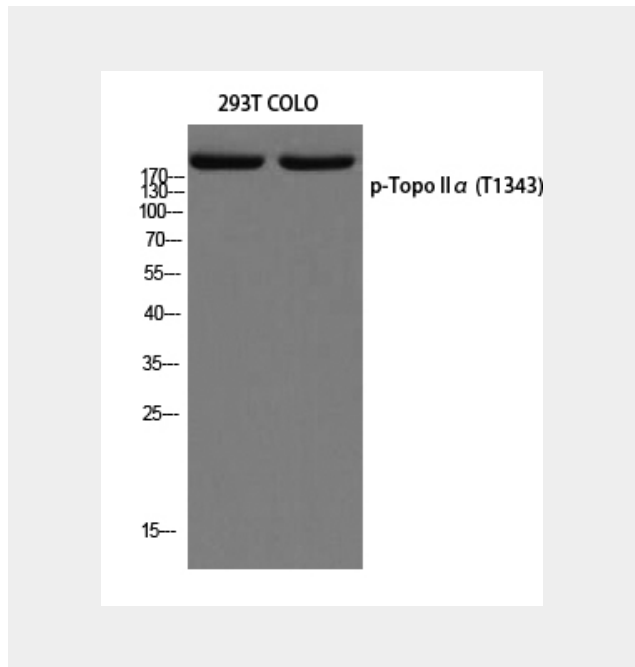
#### Topo II $\alpha$ (phospho Thr1343) Polyclonal Antibody - Protein Information

Name TOP2A

Synonyms TOP2

#### Function

Key decatenating enzyme that alters DNA topology by binding to two double-stranded DNA molecules, generating a double-stranded break in one of the strands, passing the intact strand through the broken strand, and religating the broken strand (PubMed:<a href="http://www.uniprot.org/citations/17567603" target="\_blank">17567603</a>, PubMed:<a href="http://www.uniprot.org/ci



#### Topo II $\alpha$ (phospho Thr1343) Polyclonal Antibody - Background

Control of topological states of DNA by transient breakage and subsequent rejoining of DNA strands. Topoisomerase II makes double-strand breaks. Essential during mitosis and meiosis for proper segregation of daughter chromosomes. May play a role in regulating the period length of ARNTL/BMAL1 transcriptional oscillation (By similarity).

tations/18790802"  
target="\_blank">18790802</a>,  
PubMed:<a href="http://www.uniprot.org/ci  
tations/22013166"  
target="\_blank">22013166</a>,  
PubMed:<a href="http://www.uniprot.org/ci  
tations/22323612"  
target="\_blank">22323612</a>). May play  
a role in regulating the period length of  
ARNTL/BMAL1 transcriptional oscillation (By  
similarity).

**Cellular Location**

Cytoplasm. Nucleus, nucleoplasm. Nucleus.  
Nucleus, nucleolus

**Tissue Location**

Expressed in the tonsil, spleen, lymph node,  
thymus, skin, pancreas, testis, colon,  
kidney, liver, brain and lung  
(PubMed:9155056). Also found in  
high-grade lymphomas, squamous cell lung  
tumors and seminomas (PubMed:9155056)

**Topo II $\alpha$  (phospho Thr1343) Polyclonal  
Antibody - Protocols**

Provided below are standard protocols that you  
may find useful for product applications.

- [Western Blot](#)
- [Blocking Peptides](#)
- [Dot Blot](#)
- [Immunohistochemistry](#)
- [Immunofluorescence](#)
- [Immunoprecipitation](#)
- [Flow Cytometry](#)
- [Cell Culture](#)