

**GATA2 Antibody (Center)**  
**Purified Rabbit Polyclonal Antibody (Pab)**  
**Catalog # AP6772c**

**Specification**

**GATA2 Antibody (Center) - Product Information**

Application	WB, FC,E
Primary Accession	<a href="#">P23769</a>
Other Accession	<a href="#">Q924Y4</a> , <a href="#">O09100</a>
Reactivity	Human
Predicted	Mouse, Rat
Host	Rabbit
Clonality	Polyclonal
Isotype	Rabbit Ig
Calculated MW	50500
Antigen Region	262-288

**GATA2 Antibody (Center) - Additional Information**

**Gene ID** 2624

**Other Names**

Endothelial transcription factor GATA-2,  
GATA-binding protein 2, GATA2

**Target/Specificity**

This GATA2 antibody is generated from rabbits immunized with a KLH conjugated synthetic peptide between 262-288 amino acids from the Central region of human GATA2.

**Dilution**

WB~~1:1000  
FC~~1:10~50

**Format**

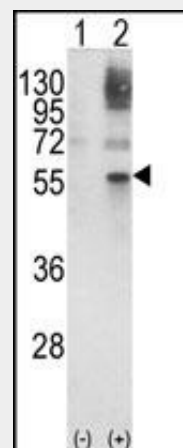
Purified polyclonal antibody supplied in PBS with 0.09% (W/V) sodium azide. This antibody is prepared by Saturated Ammonium Sulfate (SAS) precipitation followed by dialysis against PBS.

**Storage**

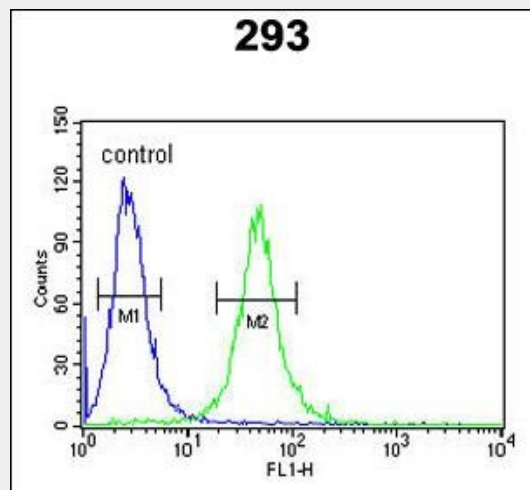
Maintain refrigerated at 2-8°C for up to 2 weeks. For long term storage store at -20°C in small aliquots to prevent freeze-thaw cycles.

**Precautions**

GATA2 Antibody (Center) is for research use



Western blot analysis of GATA2 (arrow) using rabbit polyclonal GATA2 Antibody (Center) (Cat. #AP6772c). 293 cell lysates (2 ug/lane) either nontransfected (Lane 1) or transiently transfected with the GATA2 gene (Lane 2) .



GATA2 Antibody (Center) (Cat. #AP6772c) flow cytometric analysis of 293 cells (right histogram) compared to a negative control cell (left histogram). FITC-conjugated goat-anti-rabbit secondary antibodies were used for the analysis.

**GATA2 Antibody (Center) - Background**

only and not for use in diagnostic or therapeutic procedures.

#### **GATA2 Antibody (Center) - Protein Information**

**Name** GATA2

**Function**

Transcriptional activator which regulates endothelin-1 gene expression in endothelial cells. Binds to the consensus sequence 5'-AGATAG-3'.

**Cellular Location**

Nucleus.

**Tissue Location**

Endothelial cells.

GATA2 is a member of the GATA family of zinc-finger transcription factors that are named for the consensus nucleotide sequence they bind in the promoter regions of target genes. This protein plays an essential role in regulating transcription of genes involved in the development and proliferation of hematopoietic and endocrine cell lineages.

#### **GATA2 Antibody (Center) - References**

Pan,X., et.al., J. Biochem. 127 (1), 105-112 (2000)

#### **GATA2 Antibody (Center) - Protocols**

Provided below are standard protocols that you may find useful for product applications.

- [Western Blot](#)
- [Blocking Peptides](#)
- [Dot Blot](#)
- [Immunohistochemistry](#)
- [Immunofluorescence](#)
- [Immunoprecipitation](#)
- [Flow Cytometry](#)
- [Cell Culture](#)