

WNT1 Antibody (C-term)
Purified Rabbit Polyclonal Antibody (Pab)
Catalog # AP6785B

Specification

WNT1 Antibody (C-term) - Product Information

Application	WB, IHC-P, FC,E
Primary Accession	P04628
Other Accession	P04426
Reactivity	Human, Mouse
Host	Rabbit
Clonality	Polyclonal
Isotype	Rabbit Ig
Calculated MW	40982
Antigen Region	260-288

WNT1 Antibody (C-term) - Additional Information

Gene ID 7471

Other Names

Proto-oncogene Wnt-1, Proto-oncogene
Int-1 homolog, WNT1, INT1

Target/Specificity

This WNT1 antibody is generated from rabbits immunized with a KLH conjugated synthetic peptide between 260-288 amino acids from the C-terminal region of human WNT1.

Dilution

WB~~1:1000
IHC-P~~1:10~50
FC~~1:10~50

Format

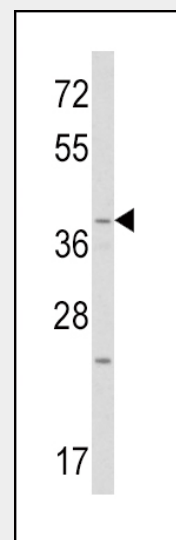
Purified polyclonal antibody supplied in PBS with 0.09% (W/V) sodium azide. This antibody is prepared by Saturated Ammonium Sulfate (SAS) precipitation followed by dialysis against PBS.

Storage

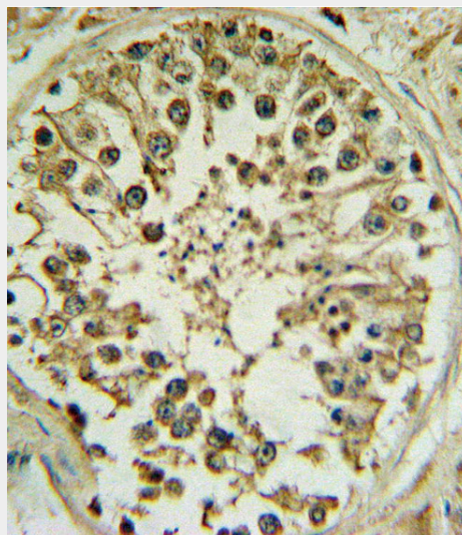
Maintain refrigerated at 2-8°C for up to 2 weeks. For long term storage store at -20°C in small aliquots to prevent freeze-thaw cycles.

Precautions

WNT1 Antibody (C-term) is for research use



Western blot analysis of WNT1 Antibody (C-term) (Cat. #AP6785b) in mouse heart tissue lysates (35ug/lane). WNT1 (arrow) was detected using the purified Pab.



WNT1 Antibody (C-term) (Cat. #AP6785b) IHC analysis in formalin fixed and paraffin embedded human testis followed by peroxidase conjugation of the secondary antibody and DAB staining. This data demonstrates the use of the WNT1 Antibody (C-term) for immunohistochemistry. Clinical

only and not for use in diagnostic or therapeutic procedures.

WNT1 Antibody (C-term) - Protein Information

Name WNT1

Synonyms INT1

Function

Ligand for members of the frizzled family of seven transmembrane receptors (Probable). Acts in the canonical Wnt signaling pathway by promoting beta-catenin-dependent transcriptional activation (PubMed:23499309, PubMed:26902720, PubMed:28528193, PubMed:23656646). In some developmental processes, is also a ligand for the coreceptor RYK, thus triggering Wnt signaling (By similarity). Plays an essential role in the development of the embryonic brain and central nervous system (CNS) (By similarity). Has a role in osteoblast function, bone development and bone homeostasis (PubMed:23499309, PubMed:23656646).

Cellular Location

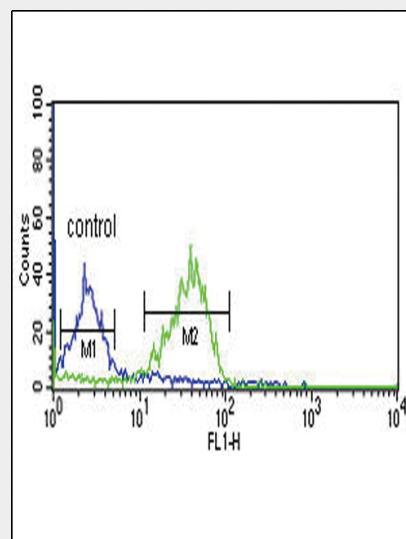
Secreted, extracellular space, extracellular matrix. Secreted

WNT1 Antibody (C-term) - Protocols

Provided below are standard protocols that you may find useful for product applications.

- [Western Blot](#)
- [Blocking Peptides](#)
- [Dot Blot](#)
- [Immunohistochemistry](#)
- [Immunofluorescence](#)

relevance has not been evaluated.



WNT1 Antibody (C-term) (Cat. #AP6785b) flow cytometric analysis of MCF-7 cells (right histogram) compared to a negative control cell (left histogram). FITC-conjugated goat-anti-rabbit secondary antibodies were used for the analysis.

WNT1 Antibody (C-term) - Background

WNT1 is known to be 98% identical to the mouse Wnt1 protein at the amino acid level. The studies in mouse indicate that the Wnt1 protein functions in the induction of the mesencephalon and cerebellum.

WNT1 Antibody (C-term) - References

Shuai,X., et.al., Cancer Genet. Cytogenet. 194 (2), 119-124 (2009)

- [Immunoprecipitation](#)
- [Flow Cytometry](#)
- [Cell Culture](#)

WNT1 Antibody (C-term) - Citations

- [Ginkgolide K promotes the clearance of A53T mutation alpha-synuclein in SH-SY5Y cells.](#)
- [Overexpression of miR-214 promotes the progression of human osteosarcoma by regulating the Wnt/ \$\beta\$ -catenin signaling pathway.](#)