

Max (phospho Ser2) Polyclonal Antibody Catalog # AP67941

Specification

Max (phospho Ser2) Polyclonal Antibody - Product Information

Application	IHC
Primary Accession	P61244
Reactivity	Human, Mouse, Rat
Host	Rabbit
Clonality	Polyclonal

Max (phospho Ser2) Polyclonal Antibody - Additional Information

Gene ID 4149

Other Names

MAX; BHLHD4; Protein max; Class D basic
helix-loop-helix protein 4; bHLHD4;
Myc-associated factor X

Dilution

IHC~Immunohistochemistry: 1/100 -
1/300. ELISA: 1/5000. Not yet tested in
other applications.

Format

Liquid in PBS containing 50% glycerol, 0.5%
BSA and 0.02% sodium azide.

Storage Conditions

-20°C

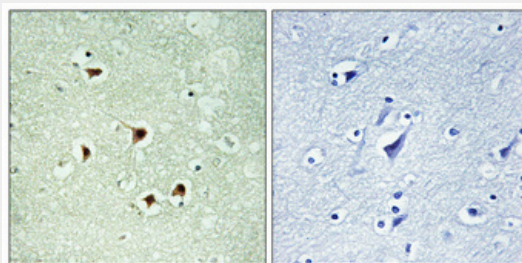
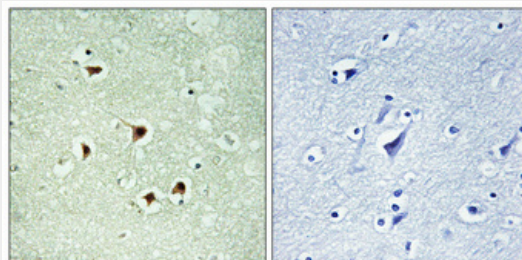
Max (phospho Ser2) Polyclonal Antibody - Protein Information

Name MAX ([HGNC:6913](#))

Synonyms BHLHD4

Function

Transcription regulator. Forms a
sequence-specific DNA- binding protein
complex with MYC or MAD which recognizes
the core sequence 5'-CAC[GA]TG-3'. The
MYC:MAX complex is a transcriptional
activator, whereas the MAD:MAX complex is
a repressor. May repress transcription via



Max (phospho Ser2) Polyclonal Antibody - Background

Transcription regulator. Forms a
sequence-specific DNA- binding protein
complex with MYC or MAD which recognizes
the core sequence 5'-CAC[GA]TG-3'. The
MYC:MAX complex is a transcriptional
activator, whereas the MAD:MAX complex is a
repressor. May repress transcription via the
recruitment of a chromatin remodeling
complex containing H3 'Lys-9' histone
methyltransferase activity. Represses MYC
transcriptional activity from E-box elements.

the recruitment of a chromatin remodeling complex containing H3 'Lys-9' histone methyltransferase activity. Represses MYC transcriptional activity from E-box elements.

Cellular Location

Nucleus. Cell projection, dendrite.

Tissue Location

High levels found in the brain, heart and lung while lower levels are seen in the liver, kidney and skeletal muscle

Max (phospho Ser2) Polyclonal Antibody - Protocols

Provided below are standard protocols that you may find useful for product applications.

- [Western Blot](#)
- [Blocking Peptides](#)
- [Dot Blot](#)
- [Immunohistochemistry](#)
- [Immunofluorescence](#)
- [Immunoprecipitation](#)
- [Flow Cytometry](#)
- [Cell Culture](#)