

TF Antibody (C-term)
Purified Rabbit Polyclonal Antibody (Pab)
Catalog # AP6804b

Specification

TF Antibody (C-term) - Product Information

Application	WB, IHC-P, FC,E
Primary Accession	P02787
Reactivity	Human
Host	Rabbit
Clonality	Polyclonal
Isotype	Rabbit Ig
Antigen Region	627-654

TF Antibody (C-term) - Additional Information

Gene ID 7018

Other Names

Serotransferrin, Transferrin, Beta-1 metal-binding globulin, Siderophilin, TF

Target/Specificity

This TF antibody is generated from rabbits immunized with a KLH conjugated synthetic peptide between 627-654 amino acids from the C-terminal region of human TF.

Dilution

WB~~1:1000
IHC-P~~1:50~100
FC~~1:10~50

Format

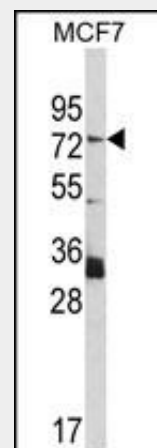
Purified polyclonal antibody supplied in PBS with 0.09% (W/V) sodium azide. This antibody is prepared by Saturated Ammonium Sulfate (SAS) precipitation followed by dialysis against PBS.

Storage

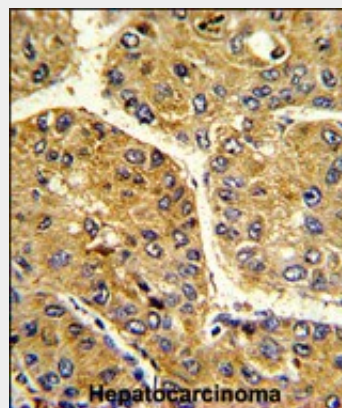
Maintain refrigerated at 2-8°C for up to 2 weeks. For long term storage store at -20°C in small aliquots to prevent freeze-thaw cycles.

Precautions

TF Antibody (C-term) is for research use only and not for use in diagnostic or therapeutic procedures.



Western blot analysis of TF Antibody (C-term) (Cat. #AP6804b) in MCF7 cell line lysates (35ug/lane). TF (arrow) was detected using the purified Pab.



Formalin-fixed and paraffin-embedded human hepatocarcinoma reacted with TF Antibody (C-term), which was peroxidase-conjugated to the secondary antibody, followed by DAB staining. This data demonstrates the use of this antibody for immunohistochemistry; clinical relevance has not been evaluated.

TF Antibody (C-term) - Protein Information

Name TF

Function

Transferrins are iron binding transport proteins which can bind two Fe(3+) ions in association with the binding of an anion, usually bicarbonate. It is responsible for the transport of iron from sites of absorption and heme degradation to those of storage and utilization. Serum transferrin may also have a further role in stimulating cell proliferation.

Cellular Location

Secreted.

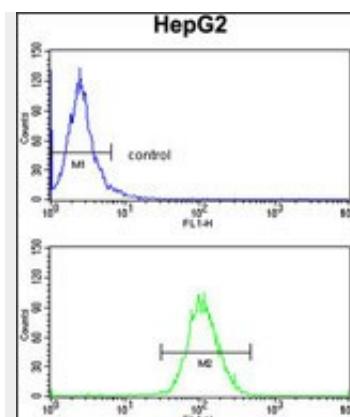
Tissue Location

Expressed by the liver and secreted in plasma.

TF Antibody (C-term) - Protocols

Provided below are standard protocols that you may find useful for product applications.

- [Western Blot](#)
- [Blocking Peptides](#)
- [Dot Blot](#)
- [Immunohistochemistry](#)
- [Immunofluorescence](#)
- [Immunoprecipitation](#)
- [Flow Cytometry](#)
- [Cell Culture](#)



TF Antibody (C-term) (Cat.#AP6804b) flow cytometry analysis of HepG2 cells (bottom histogram) compared to a negative control cell (top histogram). FITC-conjugated goat-anti-rabbit secondary antibodies were used for the analysis.

TF Antibody (C-term) - Background

TF is a glycoprotein with an approximate molecular weight of 76.5 kDa. It is thought to have been created as a result of an ancient gene duplication event that led to generation of homologous C and N-terminal domains each of which binds one ion of ferric iron. The function of this protein is to transport iron from the intestine, reticuloendothelial system, and liver parenchymal cells to all proliferating cells in the body. This protein may also have a physiologic role as granulocyte/pollen-binding protein (GPBP) involved in the removal of certain organic matter and allergens from serum.

TF Antibody (C-term) - References

Mason,A.B., et.al., Biochemistry 32 (20), 5472-5479 (1993)