

## 9G8 Polyclonal Antibody

Catalog # AP68211

### Specification

#### 9G8 Polyclonal Antibody - Product Information

Application	<b>WB</b>
Primary Accession	<a href="#">Q16629</a>
Reactivity	<b>Human, Mouse</b>
Host	<b>Rabbit</b>
Clonality	<b>Polyclonal</b>

#### 9G8 Polyclonal Antibody - Additional Information

**Gene ID** 6432

#### Other Names

SRSF7; SFRS7; Serine/arginine-rich splicing factor 7; Splicing factor 9G8; Splicing factor; arginine/serine-rich 7

#### Dilution

WB~~Western Blot: 1/500 - 1/2000.  
Immunohistochemistry: 1/100 - 1/300.  
ELISA: 1/40000. Not yet tested in other applications.

#### Format

Liquid in PBS containing 50% glycerol, 0.5% BSA and 0.02% sodium azide.

#### Storage Conditions

-20°C

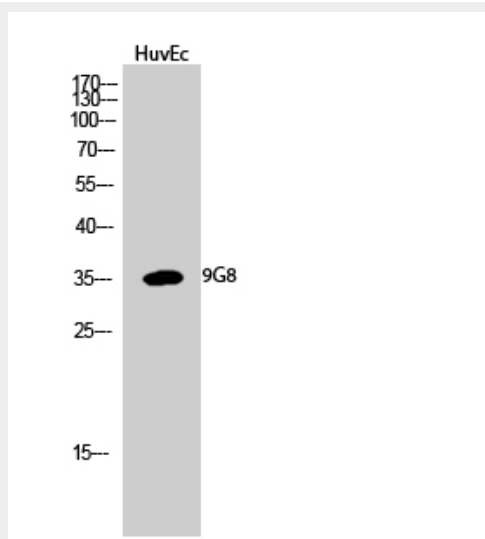
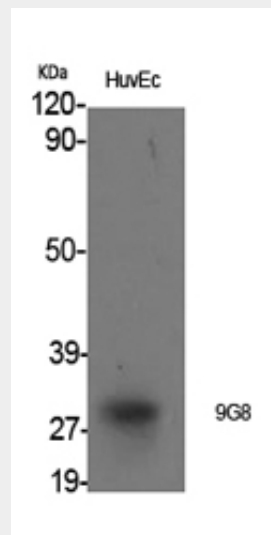
#### 9G8 Polyclonal Antibody - Protein Information

**Name** SRSF7

**Synonyms** SFRS7

#### Function

Required for pre-mRNA splicing. Can also modulate alternative splicing in vitro. Represses the splicing of MAPT/Tau exon 10. May function as export adapter involved in mRNA nuclear export such as of histone H2A. Binds mRNA which is thought to be transferred to the NXF1- NXT1 heterodimer for export (TAP/NXF1 pathway); enhances NXF1-NXT1 RNA- binding activity.



#### 9G8 Polyclonal Antibody - Background

Required for pre-mRNA splicing. Can also modulate alternative splicing in vitro. Represses the splicing of MAPT/Tau exon 10. May function as export adapter involved in mRNA nuclear export such as of histone H2A. Binds mRNA which is thought to be transferred

RNA-binding is semi-sequence specific.

**Cellular Location**

Nucleus. Cytoplasm

**Tissue Location**

Brain, liver, kidney and lung.

to the NXF1-NXT1 heterodimer for export (TAP/NXF1 pathway); enhances NXF1-NXT1 RNA-binding activity. RNA-binding is semi-sequence specific.

**9G8 Polyclonal Antibody - Protocols**

Provided below are standard protocols that you may find useful for product applications.

- [Western Blot](#)
- [Blocking Peptides](#)
- [Dot Blot](#)
- [Immunohistochemistry](#)
- [Immunofluorescence](#)
- [Immunoprecipitation](#)
- [Flow Cytometry](#)
- [Cell Culture](#)