

RELA Antibody (N-term)
Purified Rabbit Polyclonal Antibody (Pab)
Catalog # AP6826a

Specification

RELA Antibody (N-term) - Product Information

Application	IF, WB, IHC-P, FC, E
Primary Accession	Q04206
Other Accession	Q04865 , Q04207 , P98152
Reactivity	Human, Mouse
Predicted	Chicken, Xenopus
Host	Rabbit
Clonality	Polyclonal
Isotype	Rabbit Ig
Antigen Region	10-37

RELA Antibody (N-term) - Additional Information

Gene ID 5970

Other Names

Transcription factor p65, Nuclear factor NF-kappa-B p65 subunit, Nuclear factor of kappa light polypeptide gene enhancer in B-cells 3, RELA, NFKB3

Target/Specificity

This RELA antibody is generated from rabbits immunized with a KLH conjugated synthetic peptide between 10-37 amino acids from the N-terminal region of human RELA.

Dilution

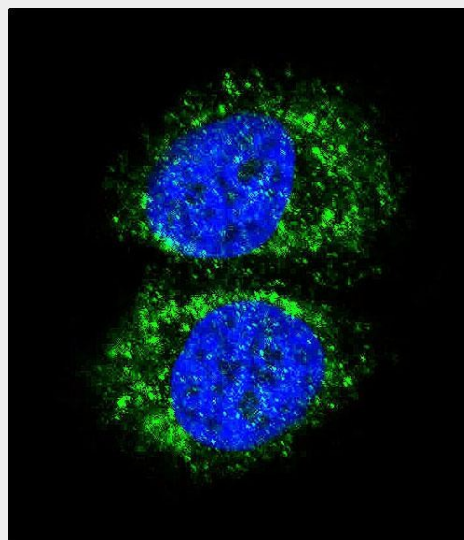
IF~~1:10~50
WB~~1:1000
IHC-P~~1:50~100
FC~~1:10~50

Format

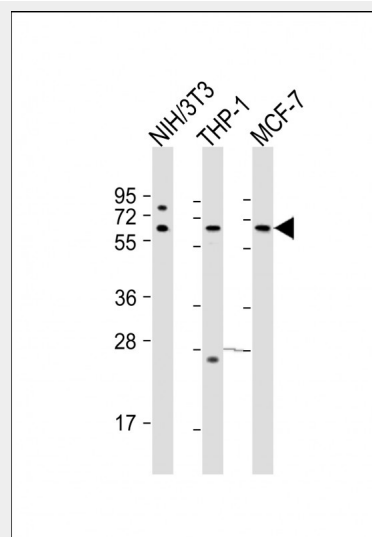
Purified polyclonal antibody supplied in PBS with 0.09% (W/V) sodium azide. This antibody is prepared by Saturated Ammonium Sulfate (SAS) precipitation followed by dialysis against PBS.

Storage

Maintain refrigerated at 2-8°C for up to 2 weeks. For long term storage store at -20°C



Confocal immunofluorescent analysis of RELA Antibody (N-term)(Cat#AP6826a) with MCF-7 cell followed by Alexa Fluor 488-conjugated goat anti-rabbit IgG (green). DAPI was used to stain the cell nuclear (blue).



All lanes : Anti-RELA Antibody (N-term) at 1:2000 dilution Lane 1: NIH/3T3 whole cell lysate Lane 2: THP-1 whole cell lysate Lane 3: MCF-7 whole cell lysate Lysates/proteins at 20 µg per lane. Secondary Goat Anti-Rabbit

in small aliquots to prevent freeze-thaw cycles.

Precautions

RELA Antibody (N-term) is for research use only and not for use in diagnostic or therapeutic procedures.

RELA Antibody (N-term) - Protein Information

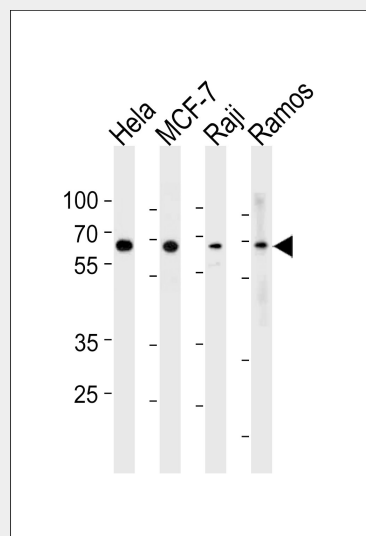
Name RELA

Synonyms NFKB3

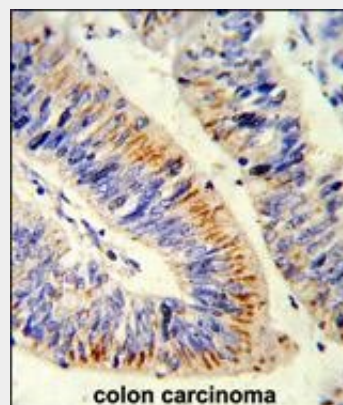
Function

NF-kappa-B is a pleiotropic transcription factor present in almost all cell types and is the endpoint of a series of signal transduction events that are initiated by a vast array of stimuli related to many biological processes such as inflammation, immunity, differentiation, cell growth, tumorigenesis and apoptosis. NF-kappa-B is a homo- or heterodimeric complex formed by the Rel-like domain- containing proteins RELA/p65, RELB, NFKB1/p105, NFKB1/p50, REL and NFKB2/p52. The heterodimeric RELA-NFKB1 complex appears to be most abundant one. The dimers bind at kappa-B sites in the DNA of their target genes and the individual dimers have distinct preferences for different kappa-B sites that they can bind with distinguishable affinity and specificity. Different dimer combinations act as transcriptional activators or repressors, respectively. The NF-kappa-B heterodimeric RELA-NFKB1 and RELA-REL complexes, for instance, function as transcriptional activators. NF-kappa-B is controlled by various mechanisms of post-translational modification and subcellular compartmentalization as well as by interactions with other cofactors or corepressors. NF-kappa-B complexes are held in the cytoplasm in an inactive state complexed with members of the NF-kappa-B inhibitor (I- kappa-B) family. In a conventional activation pathway, I-kappa-B is phosphorylated by I-kappa-B kinases (IKKs) in response to different activators, subsequently degraded thus liberating the active NF-kappa-B complex which translocates to the nucleus. The inhibitory effect of I- kappa-B on NF-kappa-B through retention in the cytoplasm is exerted primarily through the

IgG, (H+L), Peroxidase conjugated at 1/10000 dilution. Predicted band size : 60 kDa
Blocking/Dilution buffer: 5% NFDm/TBST.



RELA Antibody (N-term) (Cat. #AP6826a) western blot analysis in HeLa, MCF-7, Raji, Ramos cell line lysates (35ug/lane). This demonstrates the RELA antibody detected the RELA protein (arrow).



Formalin-fixed and paraffin-embedded human colon carcinoma reacted with RELA Antibody (N-term), which was peroxidase-conjugated to the secondary antibody, followed by DAB staining. This data demonstrates the use of this antibody for immunohistochemistry; clinical relevance has not been evaluated.

interaction with RELA. RELA shows a weak DNA-binding site which could contribute directly to DNA binding in the NF- κ B complex. Beside its activity as a direct transcriptional activator, it is also able to modulate promoters accessibility to transcription factors and thereby indirectly regulate gene expression. Associates with chromatin at the NF- κ B promoter region via association with DDX1. Essential for cytokine gene expression in T-cells (PubMed:15790681). The NF- κ B homodimeric RELA-RELA complex appears to be involved in invasion-mediated activation of IL-8 expression. Key transcription factor regulating the IFN response during SARS-CoV-2 infection (PubMed:33440148).

Cellular Location

Nucleus. Cytoplasm. Note=Nuclear, but also found in the cytoplasm in an inactive form complexed to an inhibitor (I- κ B) (PubMed:1493333). Colocalized with DDX1 in the nucleus upon TNF- α induction (PubMed:19058135). Colocalizes with GFI1 in the nucleus after LPS stimulation (PubMed:20547752). Translocation to the nucleus is impaired in *L.monocytogenes* infection (PubMed:20855622).

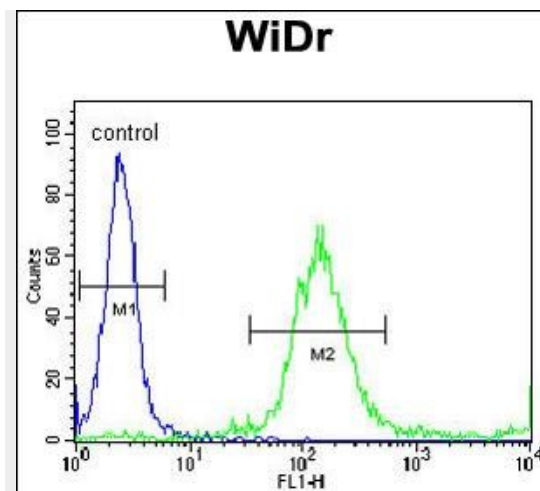
RELA Antibody (N-term) - Protocols

Provided below are standard protocols that you may find useful for product applications.

- [Western Blot](#)
- [Blocking Peptides](#)
- [Dot Blot](#)
- [Immunohistochemistry](#)
- [Immunofluorescence](#)
- [Immunoprecipitation](#)
- [Flow Cytometry](#)
- [Cell Culture](#)

RELA Antibody (N-term) - Citations

- [Activation of porcine alveolar macrophages by *Actinobacillus pleuropneumoniae* lipopolysaccharide via the TLR4/NF- \$\kappa\$ B mediated pathway.](#)



RELA Antibody (N-term) (Cat. #AP6826a) flow cytometric analysis of WiDr cells (right histogram) compared to a negative control cell (left histogram). FITC-conjugated goat-anti-rabbit secondary antibodies were used for the analysis.

RELA Antibody (N-term) - Background

NFKB1 (MIM 164011) or NFKB2 (MIM 164012) is bound to REL (MIM 164910), RELA, or RELB (MIM 604758) to form the NFKB complex. The p50 (NFKB1)/p65 (RELA) heterodimer is the most abundant form of NFKB. The NFKB complex is inhibited by I- κ B proteins (NFKBIA, MIM 164008 or NFKBIB, MIM 604495), which inactivate NFKB by trapping it in the cytoplasm. Phosphorylation of serine residues on the I- κ B proteins by kinases (IKBKA, MIM 600664, or IKBKB, MIM 603258) marks them for destruction via the ubiquitination pathway, thereby allowing activation of the NFKB complex. Activated NFKB complex translocates into the nucleus and binds DNA at κ B-binding motifs such as 5-prime GGGRNYYCC 3-prime or 5-prime HGGARNYYCC 3-prime (where H is A, C, or T; R is an A or G purine; and Y is a C or T pyrimidine).

RELA Antibody (N-term) - References

Degagne, E., et al., J. Immunol. 183 (7), 4521-4529 (2009)