

DLGAP1 Antibody (N-term)
Purified Rabbit Polyclonal Antibody (Pab)
Catalog # AP6849a

Specification

DLGAP1 Antibody (N-term) - Product Information

Application	WB, FC,E
Primary Accession	O14490
Reactivity	Human
Host	Rabbit
Clonality	Polyclonal
Isotype	Rabbit Ig
Calculated MW	108873
Antigen Region	162-190

DLGAP1 Antibody (N-term) - Additional Information

Gene ID 9229

Other Names

Disks large-associated protein 1, DAP-1, Guanylate kinase-associated protein, hGKAP, PSD-95/SAP90-binding protein 1, SAP90/PSD-95-associated protein 1, SAPAP1, DLGAP1, DAP1, GKAP

Target/Specificity

This DLGAP1 antibody is generated from rabbits immunized with a KLH conjugated synthetic peptide between 162-190 amino acids from the N-terminal region of human DLGAP1.

Dilution

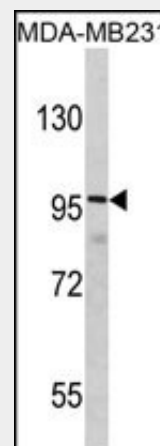
WB~~1:1000
FC~~1:10~50

Format

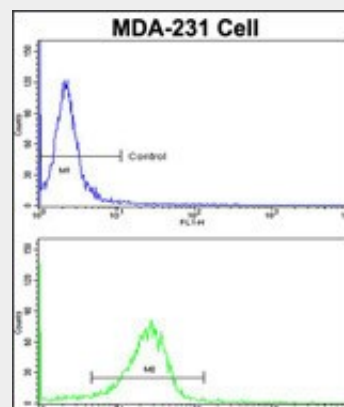
Purified polyclonal antibody supplied in PBS with 0.09% (W/V) sodium azide. This antibody is prepared by Saturated Ammonium Sulfate (SAS) precipitation followed by dialysis against PBS.

Storage

Maintain refrigerated at 2-8°C for up to 2 weeks. For long term storage store at -20°C in small aliquots to prevent freeze-thaw cycles.



Western blot analysis of DLGAP1 Antibody (N-term) (Cat. #AP6849a) in MDA-MB231 cell line lysates (35ug/lane). DLGAP1 (arrow) was detected using the purified Pab.



Flow cytometric analysis of MDA-231 cells using DLGAP1 Antibody (N-term)(bottom histogram) compared to a negative control cell (top histogram). FITC-conjugated goat-anti-rabbit secondary antibodies were used for the analysis.

DLGAP1 Antibody (N-term) - Background

DLGAP1 is part of the postsynaptic scaffold in neuronal cells.

DLGAP1 Antibody (N-term) - References

Precautions

DLGAP1 Antibody (N-term) is for research use only and not for use in diagnostic or therapeutic procedures.

Ballif,B.A., et.al., Mol. Cell Proteomics 3 (11), 1093-1101 (2004)

DLGAP1 Antibody (N-term) - Protein Information

Name DLGAP1

Synonyms DAP1, GKAP

Function

Part of the postsynaptic scaffold in neuronal cells.

Cellular Location

Cell membrane; Peripheral membrane protein. Cell junction, synapse, postsynaptic density. Cell junction, synapse

Tissue Location

Expressed in brain.

DLGAP1 Antibody (N-term) - Protocols

Provided below are standard protocols that you may find useful for product applications.

- [Western Blot](#)
- [Blocking Peptides](#)
- [Dot Blot](#)
- [Immunohistochemistry](#)
- [Immunofluorescence](#)
- [Immunoprecipitation](#)
- [Flow Cytometry](#)
- [Cell Culture](#)