

**GNAS Antibody (Center)**  
**Affinity Purified Rabbit Polyclonal Antibody (Pab)**  
**Catalog # AP6865c**

**Specification**

**GNAS Antibody (Center) - Product Information**

Application	WB,E
Primary Accession	<a href="#">Q5JWF2</a>
Reactivity	Human
Host	Rabbit
Clonality	Polyclonal
Isotype	Rabbit Ig
Calculated MW	111025
Antigen Region	640-667

**GNAS Antibody (Center) - Additional Information**

**Gene ID 2778**

**Other Names**

Guanine nucleotide-binding protein G(s) subunit alpha isoforms XLas, Adenylate cyclase-stimulating G alpha protein, Extra large alphas protein, XLalphas, GNAS, GNAS1 {ECO:0000303|PubMed:9707596}

**Target/Specificity**

This GNAS antibody is generated from rabbits immunized with a KLH conjugated synthetic peptide between 640-667 amino acids from the Central region of human GNAS.

**Dilution**

WB~~1:4000

**Format**

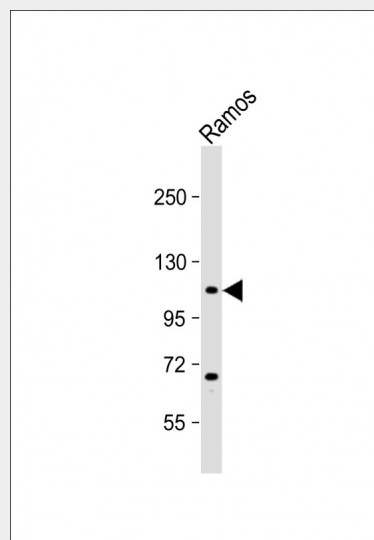
Purified polyclonal antibody supplied in PBS with 0.09% (W/V) sodium azide. This antibody is purified through a protein A column, followed by peptide affinity purification.

**Storage**

Maintain refrigerated at 2-8°C for up to 2 weeks. For long term storage store at -20°C in small aliquots to prevent freeze-thaw cycles.

**Precautions**

GNAS Antibody (Center) is for research use



Anti-GNAS Antibody (Center) at 1:4000 dilution + Ramos whole cell lysate  
Lysates/proteins at 20 µg per lane.  
Secondary Goat Anti-Rabbit IgG, (H+L), Peroxidase conjugated at 1/10000 dilution.  
Predicted band size : 111 kDa  
Blocking/Dilution buffer: 5% NFDM/TBST.

**GNAS Antibody (Center) - Background**

Guanine nucleotide-binding proteins (G proteins) are involved as modulators or transducers in various transmembrane signaling systems. The G(s) protein is involved in hormonal regulation of adenylate cyclase: it activates the cyclase in response to beta-adrenergic stimuli. XLas isoforms interact with the same set of receptors as Gnas isoforms.

**GNAS Antibody (Center) - References**

Liu,C., et.al., Eur Arch Otorhinolaryngol (2009)  
Nishihara,E., et.al., Endocr. J. 56 (6), 791-798 (2009)

only and not for use in diagnostic or therapeutic procedures.

#### **GNAS Antibody (Center) - Protein Information**

**Name** GNAS

**Synonyms** GNAS1

{ECO:0000303|PubMed:9707596}

#### **Function**

Guanine nucleotide-binding proteins (G proteins) function as transducers in numerous signaling pathways controlled by G protein- coupled receptors (GPCRs). Signaling involves the activation of adenylyl cyclases, resulting in increased levels of the signaling molecule cAMP. GNAS functions downstream of several GPCRs, including beta-adrenergic receptors. XLas isoforms interact with the same set of receptors as GNAS isoforms (By similarity).

#### **Cellular Location**

Cell membrane; Peripheral membrane protein {ECO:0000250|UniProtKB:Q63803}.  
Apical cell membrane

#### **GNAS Antibody (Center) - Protocols**

Provided below are standard protocols that you may find useful for product applications.

- [Western Blot](#)
- [Blocking Peptides](#)
- [Dot Blot](#)
- [Immunohistochemistry](#)
- [Immunofluorescence](#)
- [Immunoprecipitation](#)
- [Flow Cytometry](#)
- [Cell Culture](#)