

GALT Antibody (C-term)
Affinity Purified Rabbit Polyclonal Antibody (Pab)
Catalog # AP6880b

Specification

GALT Antibody (C-term) - Product Information

Application	WB, IHC-P, FC,E
Primary Accession	P07902
Reactivity	Human
Host	Rabbit
Clonality	Polyclonal
Isotype	Rabbit Ig
Calculated MW	43363
Antigen Region	344-373

GALT Antibody (C-term) - Additional Information

Gene ID 2592

Other Names

Galactose-1-phosphate uridylyltransferase,
Gal-1-P uridylyltransferase,
UDP-glucose--hexose-1-phosphate
uridylyltransferase, GALT

Target/Specificity

This GALT antibody is generated from rabbits immunized with a KLH conjugated synthetic peptide between 344-373 amino acids from the C-terminal region of human GALT.

Dilution

WB~~1:1000
IHC-P~~1:50~100
FC~~1:10~50

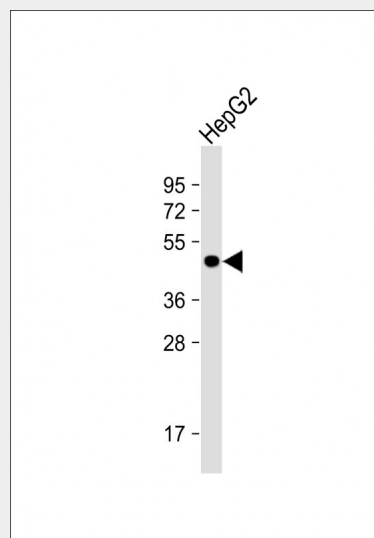
Format

Purified polyclonal antibody supplied in PBS with 0.09% (W/V) sodium azide. This antibody is purified through a protein A column, followed by peptide affinity purification.

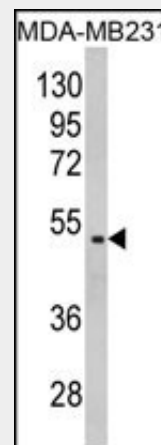
Storage

Maintain refrigerated at 2-8°C for up to 2 weeks. For long term storage store at -20°C in small aliquots to prevent freeze-thaw cycles.

Precautions



Anti-GALT Antibody (C-term) at 1:1000 dilution + HepG2 whole cell lysate
Lysates/proteins at 20 µg per lane.
Secondary Goat Anti-Rabbit IgG, (H+L), Peroxidase conjugated at 1/10000 dilution.
Predicted band size : 43 kDa
Blocking/Dilution buffer: 5% NFDM/TBST.



Western blot analysis of GALT Antibody (C-term) (Cat. #AP6880b) in MDA-MB231 cell line lysates (35ug/lane). GALT (arrow) was detected using the purified Pab.

GALT Antibody (C-term) is for research use only and not for use in diagnostic or therapeutic procedures.

GALT Antibody (C-term) - Protein Information

Name GALT

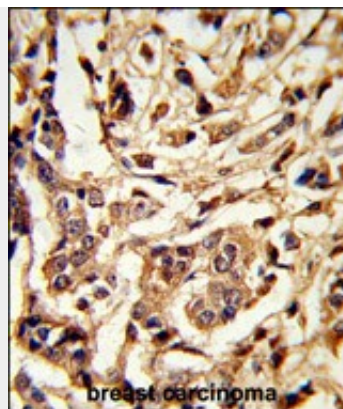
Function

Plays an important role in galactose metabolism.

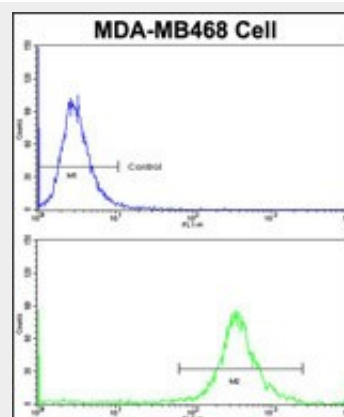
GALT Antibody (C-term) - Protocols

Provided below are standard protocols that you may find useful for product applications.

- [Western Blot](#)
- [Blocking Peptides](#)
- [Dot Blot](#)
- [Immunohistochemistry](#)
- [Immunofluorescence](#)
- [Immunoprecipitation](#)
- [Flow Cytometry](#)
- [Cell Culture](#)



Formalin-fixed and paraffin-embedded human breast carcinoma reacted with GALT Antibody (C-term), which was peroxidase-conjugated to the secondary antibody, followed by DAB staining. This data demonstrates the use of this antibody for immunohistochemistry; clinical relevance has not been evaluated.



Flow cytometric analysis of MDA-MB468 cells using GALT Antibody (C-term)(bottom histogram) compared to a negative control cell (top histogram) FITC-conjugated goat-anti-rabbit secondary antibodies were used for the analysis.

GALT Antibody (C-term) - Background

Galactose-1-phosphate uridyl transferase (GALT) catalyzes the second step of the Leloir pathway of galactose metabolism, namely the conversion of UDP-glucose + galactose-1-phosphate to glucose-1-phosphate + UDP-galactose. The absence of this enzyme results in classic galactosemia in humans and can be fatal in the newborn period if lactose is not removed from the diet.

GALT Antibody (C-term) - References

Leslie, N.D., et.al., Genomics 14 (2), 474-480
(1992)