

Caveolin-1 Polyclonal Antibody

Catalog # AP68869

Specification

Caveolin-1 Polyclonal Antibody - Product Information

Application **WB**
Primary Accession [Q03135](#)
Reactivity **Human, Mouse, Rat**
Host **Rabbit**
Clonality **Polyclonal**

Caveolin-1 Polyclonal Antibody - Additional Information

Gene ID 857

Other Names

CAV1; CAV; Caveolin-1

Dilution

WB~~WB 1:500-2000, IF 1:50-300, IHC 1:50-300

Format

Liquid in PBS containing 50% glycerol, 0.5% BSA and 0.02% sodium azide.

Storage Conditions

-20°C

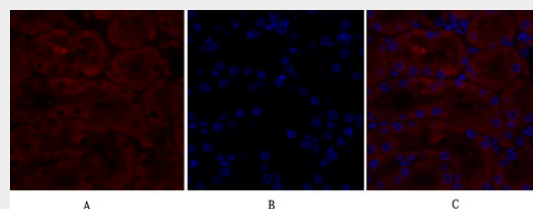
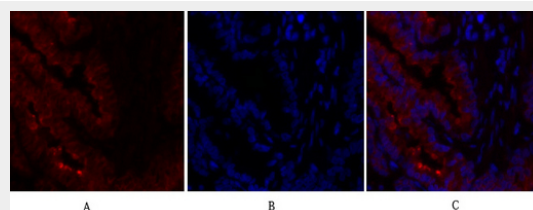
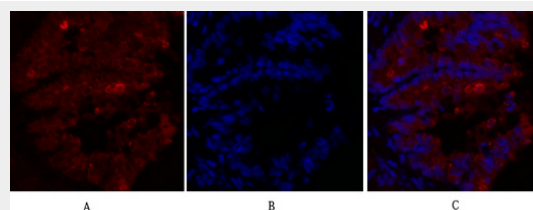
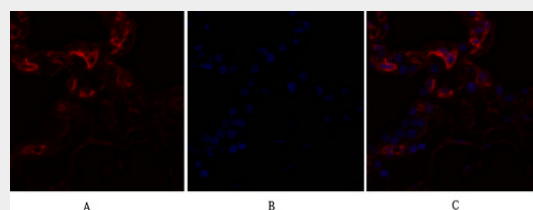
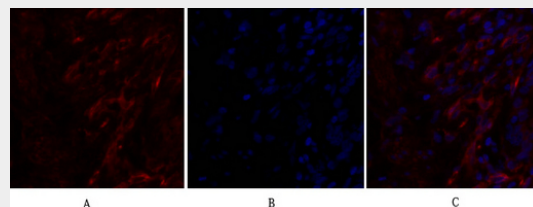
Caveolin-1 Polyclonal Antibody - Protein Information

Name CAV1

Synonyms CAV

Function

May act as a scaffolding protein within caveolar membranes (PubMed:11751885). Forms a stable heterooligomeric complex with CAV2 that targets to lipid rafts and drives caveolae formation. Mediates the recruitment of CAVIN proteins (CAVIN1/2/3/4) to the caveolae (PubMed:1926).



2564" target="_blank">19262564). Interacts directly with G-protein alpha subunits and can functionally regulate their activity (By similarity). Involved in the costimulatory signal essential for T-cell receptor (TCR)-mediated T-cell activation. Its binding to DPP4 induces T-cell proliferation and NF-kappa-B activation in a T-cell receptor/CD3-dependent manner (PubMed:17287217). Recruits CTNNB1 to caveolar membranes and may regulate CTNNB1-mediated signaling through the Wnt pathway (By similarity). Negatively regulates TGFBI-mediated activation of SMAD2/3 by mediating the internalization of TGFBR1 from membrane rafts leading to its subsequent degradation (PubMed:25893292).

Cellular Location

Golgi apparatus membrane; Peripheral membrane protein. Cell membrane; Peripheral membrane protein. Membrane, caveola; Peripheral membrane protein. Membrane raft. Golgi apparatus, trans-Golgi network {ECO:0000250|UniProtKB:P33724} Note=Colocalized with DPP4 in membrane rafts. Potential hairpin-like structure in the membrane. Membrane protein of caveolae

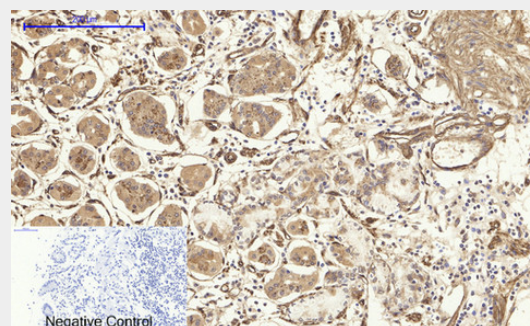
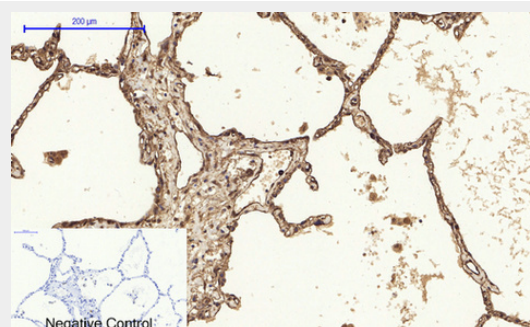
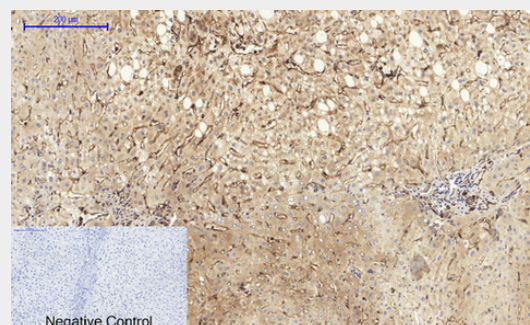
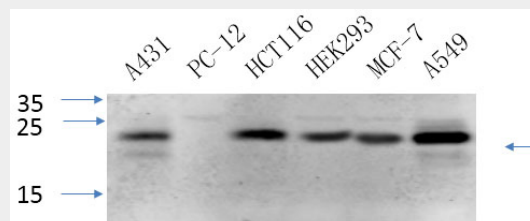
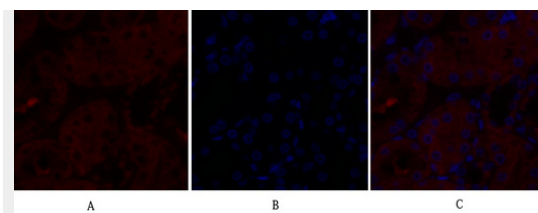
Tissue Location

Skeletal muscle, liver, stomach, lung, kidney and heart (at protein level). Expressed in the brain

Caveolin-1 Polyclonal Antibody - Protocols

Provided below are standard protocols that you may find useful for product applications.

- [Western Blot](#)
- [Blocking Peptides](#)
- [Dot Blot](#)
- [Immunohistochemistry](#)
- [Immunofluorescence](#)
- [Immunoprecipitation](#)
- [Flow Cytometry](#)
- [Cell Culture](#)



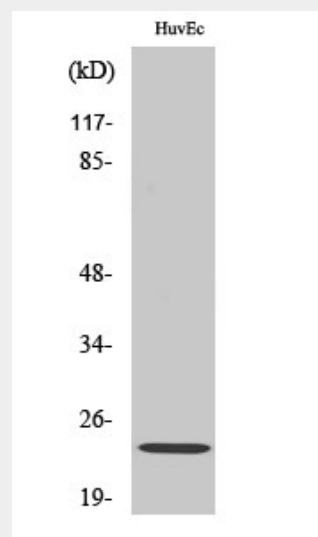
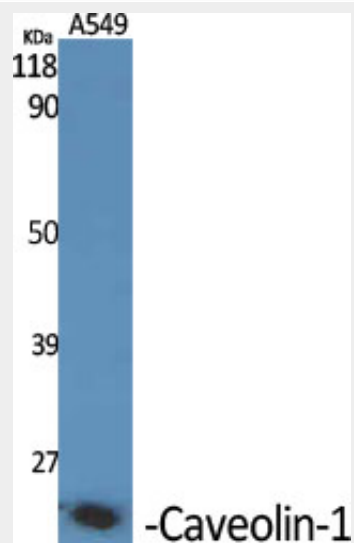
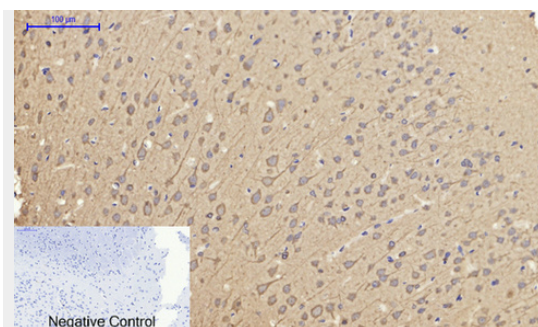
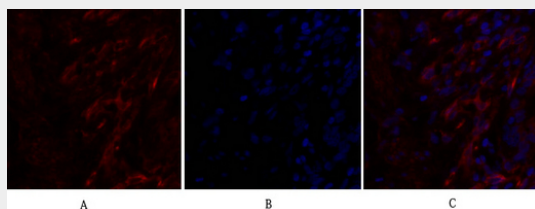
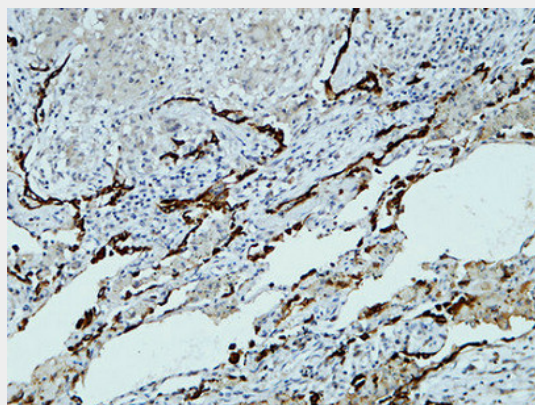
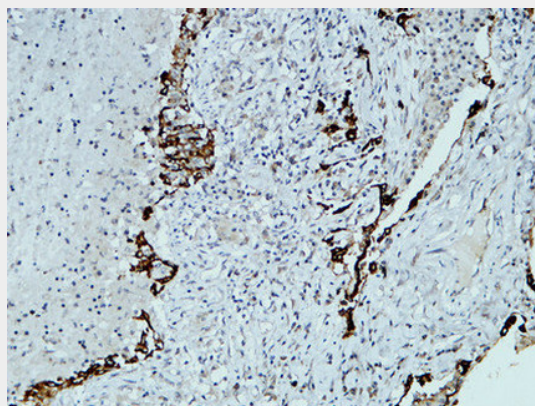
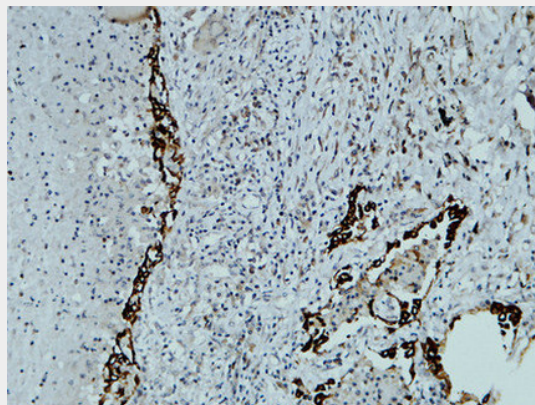
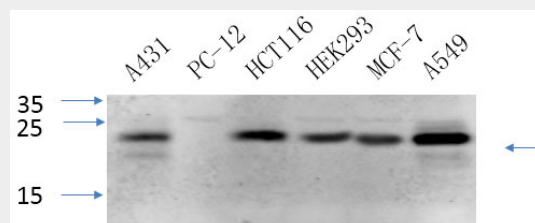
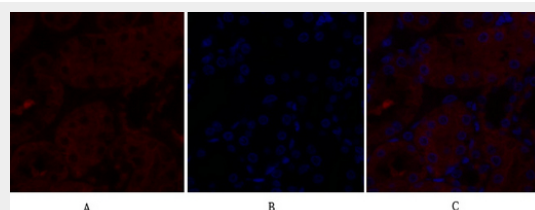
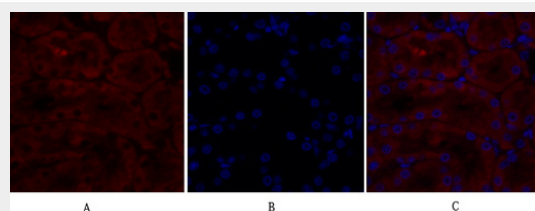
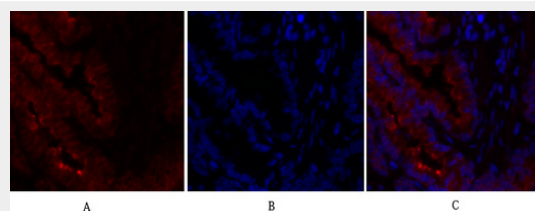
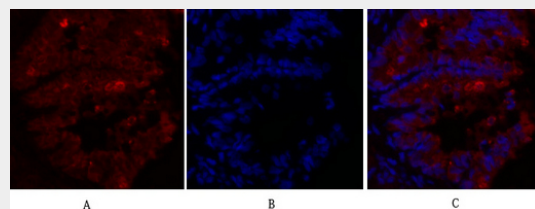
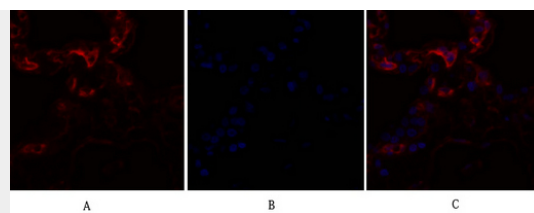
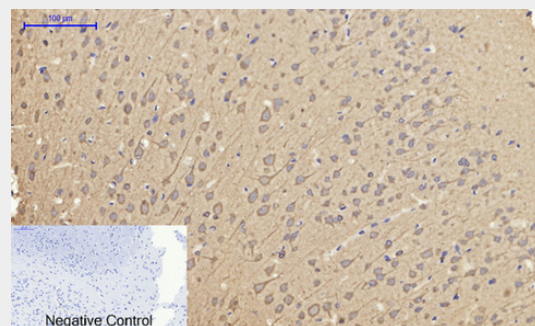
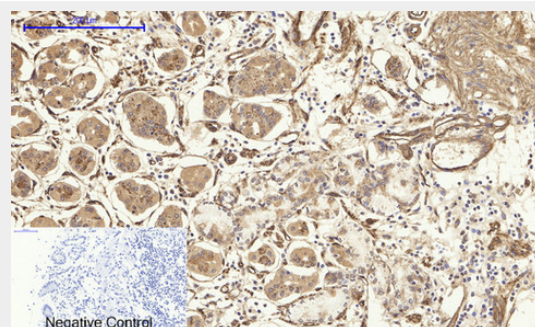
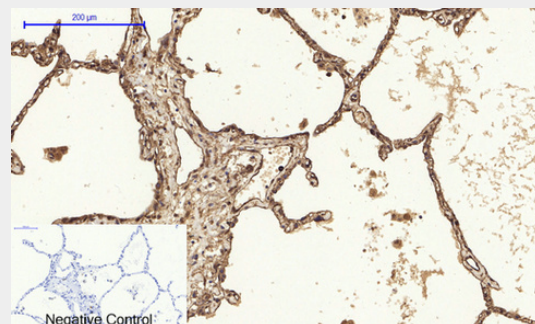
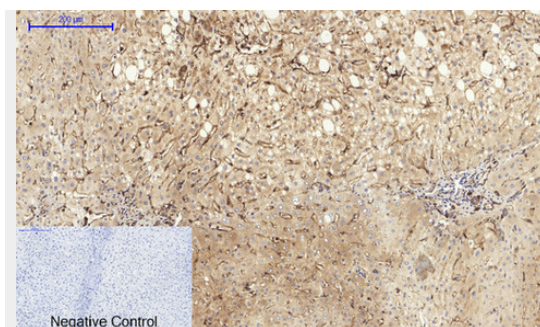


Image not found :
202004/c0139wb2016-6-3.jpg







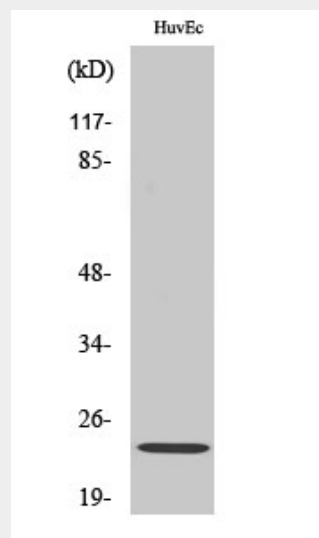
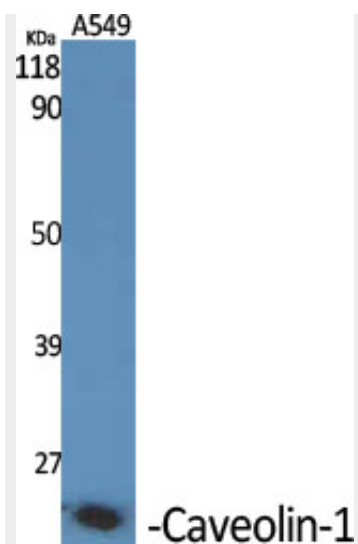
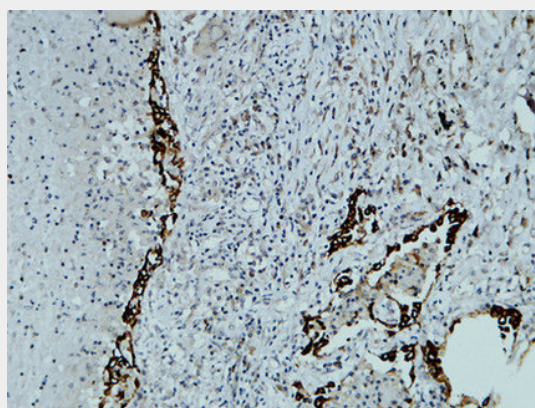
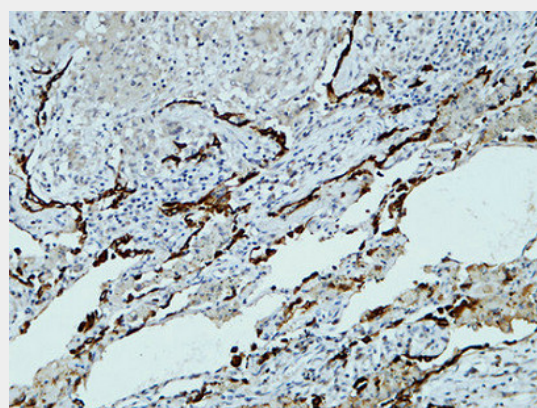
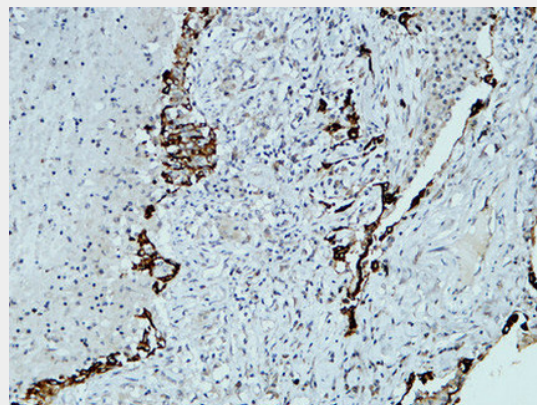


Image not found :
202004/c0139wb2016-6-3.jpg





Caveolin-1 Polyclonal Antibody - Background

May act as a scaffolding protein within caveolar membranes (PubMed:11751885). Forms a stable heterooligomeric complex with CAV2 that targets to lipid rafts and drives caveolae formation. Mediates the recruitment of CAVIN proteins (CAVIN1/2/3/4) to the caveolae (PubMed:19262564). Interacts directly with G-protein alpha subunits and can functionally regulate their activity (By similarity). Involved in the costimulatory signal essential for T-cell receptor (TCR)-mediated T-cell activation. Its binding to DPP4 induces T-cell proliferation and NF-kappa-B activation in a T-cell receptor/CD3- dependent manner (PubMed:17287217). Recruits CTNNB1 to caveolar membranes and may regulate CTNNB1-mediated signaling through the Wnt pathway (By similarity). Negatively regulates TGFBI-mediated activation of SMAD2/3 by mediating the internalization of TGFBR1 from

membrane rafts leading to its subsequent degradation (PubMed:25893292).