

Cdc50B Polyclonal Antibody
Catalog # AP68996**Specification****Cdc50B Polyclonal Antibody - Product Information**

Application	WB
Primary Accession	Q3MIR4
Reactivity	Human, Mouse
Host	Rabbit
Clonality	Polyclonal

Cdc50B Polyclonal Antibody - Additional Information**Gene ID** 161291**Other Names**

TMEM30B; CDC50B; Cell cycle control protein 50B; Transmembrane protein 30B

Dilution

WB~~Western Blot: 1/500 - 1/2000. ELISA: 1/40000. Not yet tested in other applications.

Format

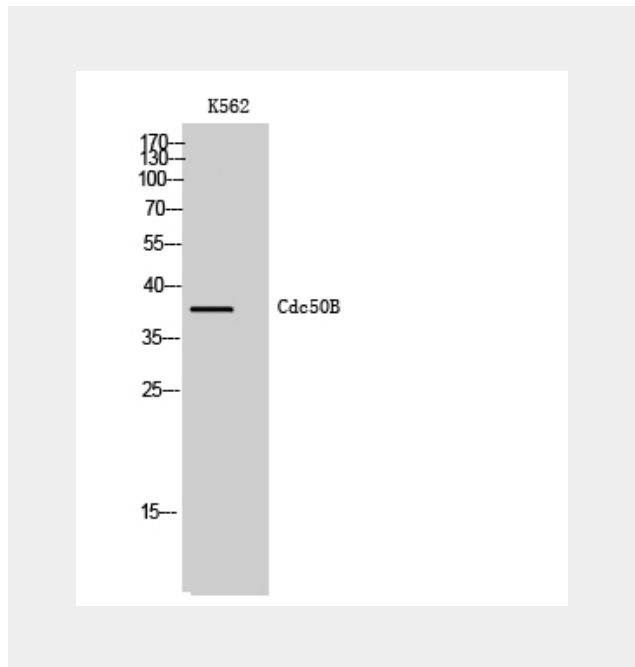
Liquid in PBS containing 50% glycerol, 0.5% BSA and 0.02% sodium azide.

Storage Conditions

-20°C

Cdc50B Polyclonal Antibody - Protein Information**Name** TMEM30B**Synonyms** CDC50B**Function**

Accessory component of a P4-ATPase flippase complex which catalyzes the hydrolysis of ATP coupled to the transport of aminophospholipids from the outer to the inner leaflet of various membranes and ensures the maintenance of asymmetric distribution of phospholipids. Phospholipid translocation seems also to be implicated in vesicle formation and in uptake of lipid signaling molecules. The beta subunit may

**Cdc50B Polyclonal Antibody - Background**

Accessory component of a P4-ATPase flippase complex which catalyzes the hydrolysis of ATP coupled to the transport of aminophospholipids from the outer to the inner leaflet of various membranes and ensures the maintenance of asymmetric distribution of phospholipids. Phospholipid translocation seems also to be implicated in vesicle formation and in uptake of lipid signaling molecules. The beta subunit may assist in binding of the phospholipid substrate (Probable). Can mediate the export of alpha subunits ATP8A1, ATP8B1, ATP8B2 and ATP8B4 from the ER to the plasma membrane.

assist in binding of the phospholipid substrate (Probable). Can mediate the export of alpha subunits ATP8A1, ATP8B1, ATP8B2 and ATP8B4 from the ER to the plasma membrane.

Cellular Location

Cell membrane; Multi-pass membrane protein

Cdc50B Polyclonal Antibody - Protocols

Provided below are standard protocols that you may find useful for product applications.

- [Western Blot](#)
- [Blocking Peptides](#)
- [Dot Blot](#)
- [Immunohistochemistry](#)
- [Immunofluorescence](#)
- [Immunoprecipitation](#)
- [Flow Cytometry](#)
- [Cell Culture](#)