

IL2 Antibody (Center)
Affinity Purified Rabbit Polyclonal Antibody (Pab)
Catalog # AP6912c

Specification

IL2 Antibody (Center) - Product Information

Application	WB, IHC-P,E
Primary Accession	P60568
Reactivity	Human
Host	Rabbit
Clonality	Polyclonal
Isotype	Rabbit Ig
Calculated MW	17628
Antigen Region	50-77

IL2 Antibody (Center) - Additional Information

Gene ID 3558

Other Names

Interleukin-2, IL-2, T-cell growth factor, TCGF, Aldesleukin, IL2

Target/Specificity

This IL2 antibody is generated from rabbits immunized with a KLH conjugated synthetic peptide between 50-77 amino acids from the Central region of human IL2.

Dilution

WB~~1:1000

IHC-P~~1:50~100

Format

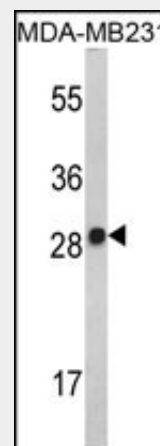
Purified polyclonal antibody supplied in PBS with 0.09% (W/V) sodium azide. This antibody is purified through a protein A column, followed by peptide affinity purification.

Storage

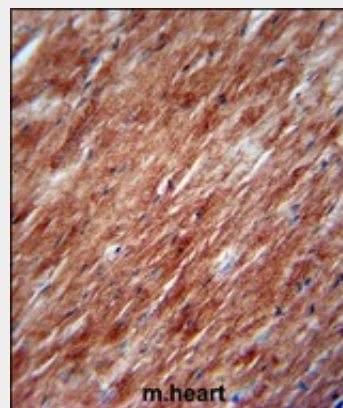
Maintain refrigerated at 2-8°C for up to 2 weeks. For long term storage store at -20°C in small aliquots to prevent freeze-thaw cycles.

Precautions

IL2 Antibody (Center) is for research use only and not for use in diagnostic or therapeutic procedures.



Western blot analysis of IL2 Antibody (Center) (Cat. #AP6912c) in MDA-MB231 cell line lysates (35ug/lane). IL2 (arrow) was detected using the purified Pab.



IL2 Antibody (Center) (Cat. #AP6912c) immunohistochemistry analysis in formalin fixed and paraffin embedded mouse heart tissue followed by peroxidase conjugation of the secondary antibody and DAB staining. This data demonstrates the use of the IL2 Antibody (Center) for immunohistochemistry. Clinical relevance has not been evaluated.

IL2 Antibody (Center) - Background

IL2 is a secreted cytokine that is important for the proliferation of T and B lymphocytes. The

IL2 Antibody (Center) - Protein Information**Name** IL2**Function**

Produced by T-cells in response to antigenic or mitogenic stimulation, this protein is required for T-cell proliferation and other activities crucial to regulation of the immune response. Can stimulate B-cells, monocytes, lymphokine-activated killer cells, natural killer cells, and glioma cells.

Cellular Location

Secreted.

receptor of this cytokine is a heterotrimeric protein complex whose gamma chain is also shared by interleukin 4 (IL4) and interleukin 7(IL7).

IL2 Antibody (Center) - References

Reyes-Gibby,C.C., et.al., Cancer Epidemiol. Biomarkers Prev. 18 (10), 2636-2642 (2009)

IL2 Antibody (Center) - Protocols

Provided below are standard protocols that you may find useful for product applications.

- [Western Blot](#)
- [Blocking Peptides](#)
- [Dot Blot](#)
- [Immunohistochemistry](#)
- [Immunofluorescence](#)
- [Immunoprecipitation](#)
- [Flow Cytometry](#)
- [Cell Culture](#)