

## Ephrin-B3 Polyclonal Antibody

Catalog # AP69779

### Specification

#### Ephrin-B3 Polyclonal Antibody - Product Information

Application **WB**  
Primary Accession [Q15768](#)  
Reactivity **Human, Mouse, Rat**  
Host **Rabbit**  
Clonality **Polyclonal**

#### Ephrin-B3 Polyclonal Antibody - Additional Information

**Gene ID** 1949

#### Other Names

EFNB3; EPLG8; LERK8; Ephrin-B3;  
EPH-related receptor transmembrane ligand  
ELK-L3; EPH-related receptor tyrosine  
kinase ligand 8; LERK-8

#### Dilution

WB~~Western Blot: 1/500 - 1/2000.  
Immunohistochemistry: 1/100 - 1/300.  
ELISA: 1/20000. Not yet tested in other  
applications.

#### Format

Liquid in PBS containing 50% glycerol, 0.5%  
BSA and 0.02% sodium azide.

#### Storage Conditions

-20°C

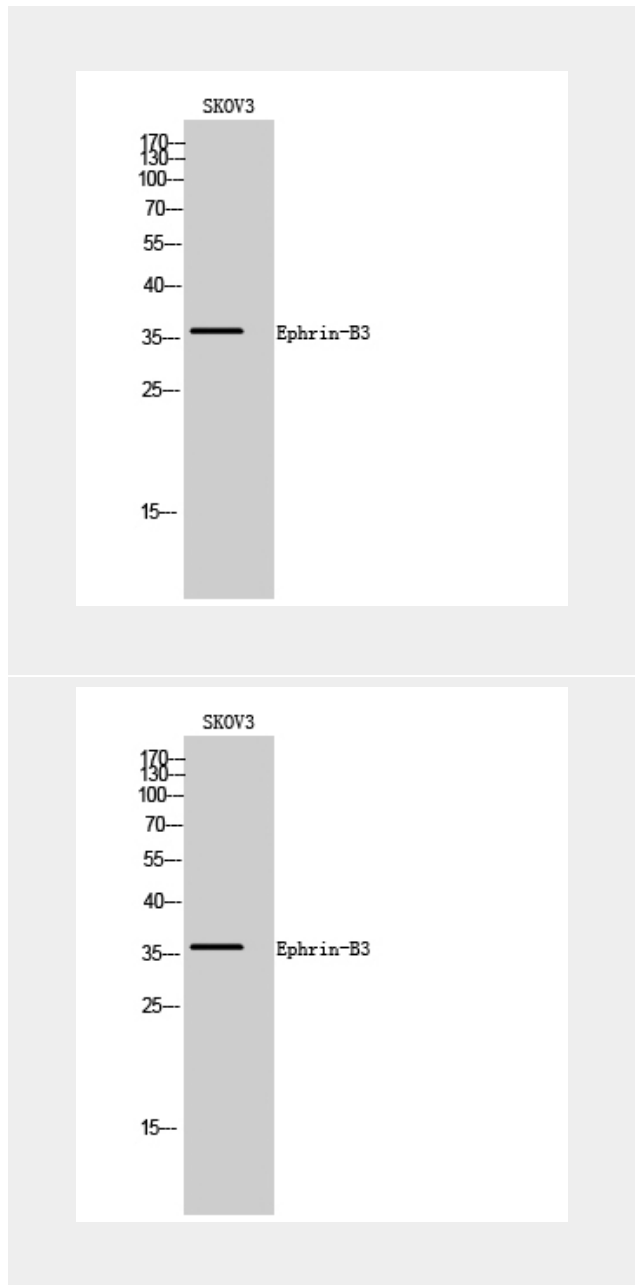
#### Ephrin-B3 Polyclonal Antibody - Protein Information

**Name** EFNB3

**Synonyms** EPLG8, LERK8

#### Function

Cell surface transmembrane ligand for Eph  
receptors, a family of receptor tyrosine  
kinases which are crucial for migration,  
repulsion and adhesion during neuronal,  
vascular and epithelial development. Binds



#### Ephrin-B3 Polyclonal Antibody - Background

Cell surface transmembrane ligand for Eph  
receptors, a family of receptor tyrosine kinases  
which are crucial for migration, repulsion and  
adhesion during neuronal, vascular and  
epithelial development. Binds promiscuously

promiscuously Eph receptors residing on adjacent cells, leading to contact-dependent bidirectional signaling into neighboring cells. The signaling pathway downstream of the receptor is referred to as forward signaling while the signaling pathway downstream of the ephrin ligand is referred to as reverse signaling. May play a pivotal role in forebrain function. Binds to, and induce the collapse of, commissural axons/growth cones in vitro. May play a role in constraining the orientation of longitudinally projecting axons (By similarity).

**Cellular Location**

Membrane; Single-pass type I membrane protein.

**Tissue Location**

Highly expressed in brain; expressed in embryonic floor plate, roof plate and hindbrain segments

Eph receptors residing on adjacent cells, leading to contact-dependent bidirectional signaling into neighboring cells. The signaling pathway downstream of the receptor is referred to as forward signaling while the signaling pathway downstream of the ephrin ligand is referred to as reverse signaling. May play a pivotal role in forebrain function. Binds to, and induce the collapse of, commissural axons/growth cones in vitro. May play a role in constraining the orientation of longitudinally projecting axons (By similarity).

**Ephrin-B3 Polyclonal Antibody - Protocols**

Provided below are standard protocols that you may find useful for product applications.

- [Western Blot](#)
- [Blocking Peptides](#)
- [Dot Blot](#)
- [Immunohistochemistry](#)
- [Immunofluorescence](#)
- [Immunoprecipitation](#)
- [Flow Cytometry](#)
- [Cell Culture](#)