

**AKT3 Antibody (Center)**  
**Purified Rabbit Polyclonal Antibody (Pab)**  
**Catalog # AP7030c**

**Specification**

**AKT3 Antibody (Center) - Product Information**

Application	WB, IHC-P,E
Primary Accession	<a href="#">Q9Y243</a>
Other Accession	<a href="#">Q63484</a> , <a href="#">Q9WUA6</a>
Reactivity	Human, Mouse, Monkey, Rat
Host	Rabbit
Clonality	Polyclonal
Isotype	Rabbit Ig
Calculated MW	55775
Antigen Region	88-118

**AKT3 Antibody (Center) - Additional Information**

**Gene ID** 10000

**Other Names**

RAC-gamma serine/threonine-protein kinase, Protein kinase Akt-3, Protein kinase B gamma, PKB gamma, RAC-PK-gamma, STK-2, AKT3, PKBG

**Target/Specificity**

This AKT3 antibody is generated from rabbits immunized with a KLH conjugated synthetic peptide between 88-118 amino acids from the Central region of human AKT3.

**Dilution**

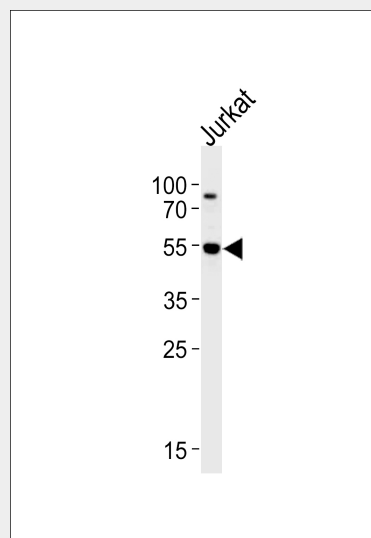
WB~~1:1000  
IHC-P~~1:50~100

**Format**

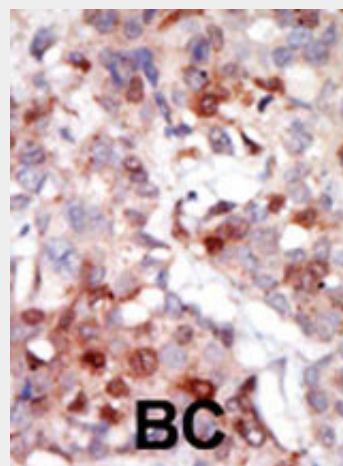
Purified polyclonal antibody supplied in PBS with 0.09% (W/V) sodium azide. This antibody is prepared by Saturated Ammonium Sulfate (SAS) precipitation followed by dialysis against PBS.

**Storage**

Maintain refrigerated at 2-8°C for up to 2 weeks. For long term storage store at -20°C in small aliquots to prevent freeze-thaw cycles.



Western blot analysis of lysate from Jurkat cell line, using AKT3 Antibody (Q103)(Cat. #AP7030c). AP7030c was diluted at 1:1000 at each lane. A goat anti-rabbit IgG H&L(HRP) at 1:5000 dilution was used as the secondary antibody. Lysate at 35ug per lane.



Formalin-fixed and paraffin-embedded human cancer tissue reacted with the primary antibody, which was peroxidase-conjugated to the secondary antibody, followed by AEC staining. This data demonstrates the use of this antibody for immunohistochemistry; clinical relevance has

**Precautions**

AKT3 Antibody (Center) is for research use only and not for use in diagnostic or therapeutic procedures.

not been evaluated. BC = breast carcinoma;  
HC = hepatocarcinoma.

**AKT3 Antibody (Center) - Protein Information**

**Name** AKT3

**Synonyms** PKBG

**Function**

AKT3 is one of 3 closely related serine/threonine-protein kinases (AKT1, AKT2 and AKT3) called the AKT kinase, and which regulate many processes including metabolism, proliferation, cell survival, growth and angiogenesis. This is mediated through serine and/or threonine phosphorylation of a range of downstream substrates. Over 100 substrate candidates have been reported so far, but for most of them, no isoform specificity has been reported. AKT3 is the least studied AKT isoform. It plays an important role in brain development and is crucial for the viability of malignant glioma cells. AKT3 isoform may also be the key molecule in up-regulation and down-regulation of MMP13 via IL13. Required for the coordination of mitochondrial biogenesis with growth factor-induced increases in cellular energy demands. Down-regulation by RNA interference reduces the expression of the phosphorylated form of BAD, resulting in the induction of caspase-dependent apoptosis.

**Cellular Location**

Nucleus. Cytoplasm. Membrane; Peripheral membrane protein

Note=Membrane-associated after cell stimulation leading to its translocation

**Tissue Location**

In adult tissues, it is highly expressed in brain, lung and kidney, but weakly in heart, testis and liver. In fetal tissues, it is highly expressed in heart, liver and brain and not at all in kidney

**AKT3 Antibody (Center) - Background**

AKT3 is a member of the AKT, also called PKB, serine/threonine protein kinase family. AKT kinases are known to be regulators of cell signaling in response to insulin and growth factors. They are involved in a wide variety of biological processes including cell proliferation, differentiation, apoptosis, tumorigenesis, as well as glycogen synthesis and glucose uptake. This kinase has been shown to be stimulated by platelet-derived growth factor (PDGF), insulin, and insulin-like growth factor 1 (IGF1).

**AKT3 Antibody (Center) - Protocols**

Provided below are standard protocols that you

may find useful for product applications.

- [Western Blot](#)
- [Blocking Peptides](#)
- [Dot Blot](#)
- [Immunohistochemistry](#)
- [Immunofluorescence](#)
- [Immunoprecipitation](#)
- [Flow Cytometry](#)
- [Cell Culture](#)