

LATS2 Antibody (Center)
Purified Rabbit Polyclonal Antibody (Pab)
Catalog # AP7035C

Specification

LATS2 Antibody (Center) - Product Information

Application	IHC-P,E
Primary Accession	Q9NRM7
Other Accession	Q9P2X1
Reactivity	Human
Host	Rabbit
Clonality	Polyclonal
Isotype	Rabbit Ig
Antigen Region	228-258

LATS2 Antibody (Center) - Additional Information

Gene ID 26524

Other Names

Serine/threonine-protein kinase LATS2,
Kinase phosphorylated during mitosis
protein, Large tumor suppressor homolog 2,
Serine/threonine-protein kinase kpm,
Warts-like kinase, LATS2
{ECO:0000312|EMBL:BAA923811}, KPM

Target/Specificity

This LATS2 antibody is generated from rabbits immunized with a KLH conjugated synthetic peptide between 228-258 amino acids from the Central region of human LATS2.

Dilution

IHC-P~~1:10~50

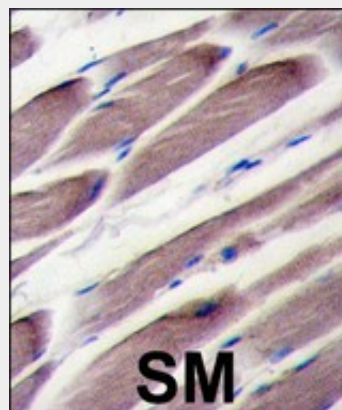
Format

Purified polyclonal antibody supplied in PBS with 0.09% (W/V) sodium azide. This antibody is prepared by Saturated Ammonium Sulfate (SAS) precipitation followed by dialysis against PBS.

Storage

Maintain refrigerated at 2-8°C for up to 2 weeks. For long term storage store at -20°C in small aliquots to prevent freeze-thaw cycles.

Precautions



Formalin-fixed and paraffin-embedded human skeletal muscle tissue reacted with LATS2 antibody (Center), which was peroxidase-conjugated to the secondary antibody, followed by DAB staining. This data demonstrates the use of this antibody for immunohistochemistry; clinical relevance has not been evaluated.

LATS2 Antibody (Center) - Background

LATS2 is a serine/threonine protein kinase belonging to the LATS tumor suppressor family. This protein localizes to centrosomes during interphase, and early and late metaphase. It interacts with the centrosomal proteins aurora-A and ajuba and is required for accumulation of gamma-tubulin and spindle formation at the onset of mitosis. It also interacts with a negative regulator of p53 and may function in a positive feedback loop with p53 that responds to cytoskeleton damage. Additionally, it can function as a co-repressor of androgen-responsive gene expression.

LATS2 Antibody (Center) - References

Blume-Jensen P, et al. Nature 2001. 411: 355.
Cantrell D, J. Cell Sci. 2001. 114: 1439. Jhiang S
Oncogene 2000. 19: 5590. Manning G, et al.
Science 2002. 298: 1912. Moller, D, et al. Am.
J. Physiol. 1994. 266: C351-C359. Robertson, S.

LATS2 Antibody (Center) is for research use only and not for use in diagnostic or therapeutic procedures.

LATS2 Antibody (Center) - Protein Information

Name LATS2

{ECO:0000312|EMBL:BAA92381.1}

Synonyms KPM

Function

Negative regulator of YAP1 in the Hippo signaling pathway that plays a pivotal role in organ size control and tumor suppression by restricting proliferation and promoting apoptosis. The core of this pathway is composed of a kinase cascade wherein STK3/MST2 and STK4/MST1, in complex with its regulatory protein SAV1, phosphorylates and activates LATS1/2 in complex with its regulatory protein MOB1, which in turn phosphorylates and inactivates YAP1 oncoprotein and WWTR1/TAZ. Phosphorylation of YAP1 by LATS2 inhibits its translocation into the nucleus to regulate cellular genes important for cell proliferation, cell death, and cell migration. Acts as a tumor suppressor which plays a critical role in centrosome duplication, maintenance of mitotic fidelity and genomic stability. Negatively regulates G1/S transition by down-regulating cyclin E/CDK2 kinase activity. Negative regulator of the androgen receptor. Phosphorylates SNAI1 in the nucleus leading to its nuclear retention and stabilization, which enhances its epithelial-mesenchymal transition and tumor cell invasion/migration activities. This tumor-promoting activity is independent of its effects upon YAP1 or WWTR1/TAZ.

Cellular Location

Cytoplasm, cytoskeleton, microtubule organizing center, centrosome. Cytoplasm. Cytoplasm, cytoskeleton, spindle pole Nucleus. Note=Colocalizes with AURKA at the centrosomes during interphase, early prophase and cytokinesis. Migrates to the spindle poles during mitosis, and to the midbody during cytokinesis Translocates to the nucleus upon mitotic stress by nocodazole treatment

Tissue Location

Expressed at high levels in heart and

et al. Trends Genet. 2000. 16: 368. Robinson D, et al. Oncogene 2000. 19: 5548. Van der Ven, P, et al. Hum. Molec. Genet. 1993. 2: 1889. Vanhaesebroeck, B, et al. Biochem. J. 2000. 346: 561. Van Weering D, et al. Recent Results Cancer Res. 1998. 154: 271.

skeletal muscle and at lower levels in all other tissues examined

LATS2 Antibody (Center) - Protocols

Provided below are standard protocols that you may find useful for product applications.

- [Western Blot](#)
- [Blocking Peptides](#)
- [Dot Blot](#)
- [Immunohistochemistry](#)
- [Immunofluorescence](#)
- [Immunoprecipitation](#)
- [Flow Cytometry](#)
- [Cell Culture](#)

LATS2 Antibody (Center) - Citations

- [MicroRNA-372 is associated with poor prognosis in colorectal cancer.](#)