

**PKLR Antibody (C-term)**  
**Purified Rabbit Polyclonal Antibody (Pab)**  
**Catalog # AP7043b**

**Specification**

**PKLR Antibody (C-term) - Product Information**

Application	WB, IHC-P,E
Primary Accession	<a href="#">P30613</a>
Other Accession	<a href="#">P12928</a> , <a href="#">P53657</a>
Reactivity	Human, Mouse
Predicted	Rat
Host	Rabbit
Clonality	Polyclonal
Isotype	Rabbit Ig
Calculated MW	61830
Antigen Region	521-551

**PKLR Antibody (C-term) - Additional Information**

**Gene ID** 5313

**Other Names**

Pyruvate kinase PKLR, Pyruvate kinase 1,  
Pyruvate kinase isozymes L/R, R-type/L-type  
pyruvate kinase, Red cell/liver pyruvate  
kinase, PKLR, PK1, PKL

**Target/Specificity**

This PKLR antibody is generated from rabbits immunized with a KLH conjugated synthetic peptide between 521-551 amino acids from the C-terminal region of human PKLR.

**Dilution**

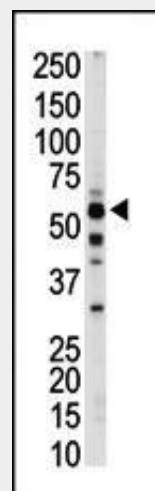
WB~~1:1000  
IHC-P~~1:50~100

**Format**

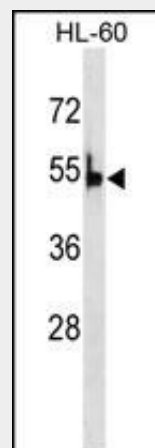
Purified polyclonal antibody supplied in PBS with 0.09% (W/V) sodium azide. This antibody is purified through a protein A column, followed by peptide affinity purification.

**Storage**

Maintain refrigerated at 2-8°C for up to 2 weeks. For long term storage store at -20°C in small aliquots to prevent freeze-thaw cycles.



The anti-PKLR Pab (Cat. #AP7043b) is used in Western blot to detect PKLR in mouse liver tissue lysate.



PKLR Antibody (G536) (Cat. #AP7043b) western blot analysis in HL-60 cell line lysates (35ug/lane). This demonstrates the PKLR antibody detected the PKLR protein (arrow).

**Precautions**

PKLR Antibody (C-term) is for research use only and not for use in diagnostic or therapeutic procedures.

**PKLR Antibody (C-term) - Protein Information**

**Name** PKLR

**Synonyms** PK1, PKL

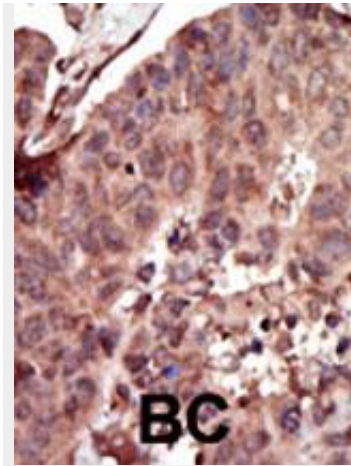
**Function**

Plays a key role in glycolysis.

**PKLR Antibody (C-term) - Protocols**

Provided below are standard protocols that you may find useful for product applications.

- [Western Blot](#)
- [Blocking Peptides](#)
- [Dot Blot](#)
- [Immunohistochemistry](#)
- [Immunofluorescence](#)
- [Immunoprecipitation](#)
- [Flow Cytometry](#)
- [Cell Culture](#)



Formalin-fixed and paraffin-embedded human cancer tissue reacted with the primary antibody, which was peroxidase-conjugated to the secondary antibody, followed by AEC staining. This data demonstrates the use of this antibody for immunohistochemistry; clinical relevance has not been evaluated. BC = breast carcinoma; HC = hepatocarcinoma.

**PKLR Antibody (C-term) - Background**

PKLR is a pyruvate kinase that catalyzes the production of phosphoenolpyruvate from pyruvate and ATP. Defects in this enzyme, due to gene mutations or genetic variations, are the common cause of chronic hereditary nonspherocytic hemolytic anemia (CNSHA or HNSHA).

**PKLR Antibody (C-term) - References**

Wang, H., et al., Diabetes 51(9):2861-2865 (2002).  
Valentini, G., et al., J. Biol. Chem. 277(26):23807-23814 (2002).  
Mateu, E., et al., Hum. Genet. 110(6):532-544 (2002).  
Indo, Y., et al., Hum. Mutat. 18(4):308-318 (2001).  
Acan, N.L., et al., J. Enzym. Inhib. 16(5):457-464 (2001).