

LIMK-2 Polyclonal Antibody

Catalog # AP70748

Specification

LIMK-2 Polyclonal Antibody - Product Information

Application	WB
Primary Accession	P53671
Reactivity	Human, Mouse, Rat
Host	Rabbit
Clonality	Polyclonal

LIMK-2 Polyclonal Antibody - Additional Information

Gene ID 3985

Other Names

LIMK2; LIM domain kinase 2; LIMK-2

Dilution

WB~~Western Blot: 1/500 - 1/2000. ELISA:
1/20000. Not yet tested in other
applications.

Format

Liquid in PBS containing 50% glycerol, 0.5%
BSA and 0.02% sodium azide.

Storage Conditions

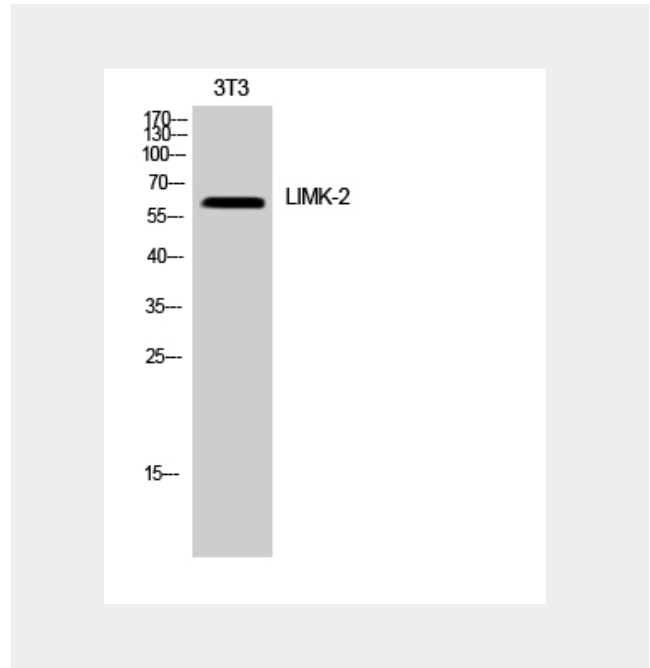
-20°C

LIMK-2 Polyclonal Antibody - Protein Information

Name LIMK2

Function

Serine/threonine-protein kinase that plays
an essential role in the regulation of actin
filament dynamics (PubMed:<a href="http://
www.uniprot.org/citations/10436159"
target="_blank">10436159,
PubMed:<a href="http://www.uniprot.org/ci
tations/11018042"
target="_blank">11018042). Acts
downstream of several Rho family GTPase
signal transduction pathways (PubMed:<a h
ref="http://www.uniprot.org/citations/10436
159" target="_blank">10436159,
PubMed:<a href="http://www.uniprot.org/ci



LIMK-2 Polyclonal Antibody - Background

Displays serine/threonine-specific
phosphorylation of myelin basic protein and
histone (MBP) in vitro.

tations/11018042" target="_blank">11018042). Involved in astral microtubule organization and mitotic spindle orientation during early stages of mitosis by mediating phosphorylation of TPPP (PubMed:22328514). Displays serine/threonine-specific phosphorylation of myelin basic protein and histone (MBP) in vitro (PubMed:8537403). Suppresses ciliogenesis via multiple pathways; phosphorylation of CFL1, suppression of directional trafficking of ciliary vesicles to the ciliary base, and by facilitating YAP1 nuclear localization where it acts as a transcriptional corepressor of the TEAD4 target genes AURKA and PLK1 (PubMed:25849865).

Cellular Location

Cytoplasm, cytoskeleton, spindle.
Cytoplasm, cytoskeleton, microtubule organizing center, centrosome [Isoform LIMK2b]: Cytoplasm. Cytoplasm, perinuclear region. Nucleus Note=Mainly present in the cytoplasm and is scarcely translocated to the nucleus.

LIMK-2 Polyclonal Antibody - Protocols

Provided below are standard protocols that you may find useful for product applications.

- [Western Blot](#)
- [Blocking Peptides](#)
- [Dot Blot](#)
- [Immunohistochemistry](#)
- [Immunofluorescence](#)
- [Immunoprecipitation](#)
- [Flow Cytometry](#)
- [Cell Culture](#)