

Neuralized-1 Polyclonal Antibody
Catalog # AP71235**Specification****Neuralized-1 Polyclonal Antibody - Product Information**

Application	WB
Primary Accession	O76050
Reactivity	Human
Host	Rabbit
Clonality	Polyclonal

Neuralized-1 Polyclonal Antibody - Additional Information**Gene ID** 9148**Other Names**

NEURL; NEURL1; NEURL1A; RNF67;
Neuralized-like protein 1A; h-neu;
h-neuralized 1; RING finger protein 67

Dilution

WB~~Western Blot: 1/500 - 1/2000.
Immunohistochemistry: 1/100 - 1/300.
ELISA: 1/40000. Not yet tested in other applications.

Format

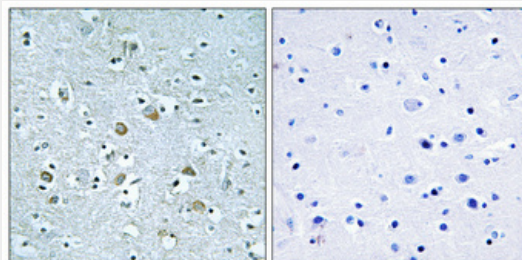
Liquid in PBS containing 50% glycerol, 0.5% BSA and 0.02% sodium azide.

Storage Conditions

-20°C

Neuralized-1 Polyclonal Antibody - Protein Information**Name** NEURL1**Synonyms** NEURL, NEURL1A, RNF67**Function**

Plays a role in hippocampal-dependent synaptic plasticity, learning and memory. Involved in the formation of spines and functional synaptic contacts by modulating the translational activity of the cytoplasmic polyadenylation element-binding protein CPEB3. Promotes ubiquitination of CPEB3,

**Neuralized-1 Polyclonal Antibody - Background**

Plays a role in hippocampal-dependent synaptic plasticity, learning and memory. Involved in the formation of spines and functional synaptic contacts by modulating the translational activity of the cytoplasmic polyadenylation element-binding protein CPEB3. Promotes ubiquitination of CPEB3, and hence induces CPEB3-dependent mRNA translation activation of glutamate receptor GRIA1 and GRIA2. Can function as an E3 ubiquitin-protein ligase to activate monoubiquitination of JAG1 (in vitro), thereby regulating the Notch pathway. Acts as a tumor suppressor; inhibits malignant cell transformation of medulloblastoma (MB) cells by inhibiting the Notch signaling pathway.

and hence induces CPEB3-dependent mRNA translation activation of glutamate receptor GRIA1 and GRIA2. Can function as an E3 ubiquitin-protein ligase to activate monoubiquitination of JAG1 (in vitro), thereby regulating the Notch pathway. Acts as a tumor suppressor; inhibits malignant cell transformation of medulloblastoma (MB) cells by inhibiting the Notch signaling pathway.

Cellular Location

Cytoplasm, perinuclear region. Cell membrane; Peripheral membrane protein Perikaryon. Cell projection, dendrite. Cell junction, synapse, postsynaptic density. Note=Localized in the cell bodies of the pyramidal neurons and distributed along their apical dendrites. Colocalized with PSD95 in postsynaptic sites Colocalized with CPEB3 at apical dendrites of CA1 neurons (By similarity). Colocalized with JAG1 at the cell surface.

Tissue Location

Expressed in brain, testis, pituitary gland, pancreas and bone marrow. Also poorly expressed in malignant astrocytomas and several neuroectodermal tumor cell lines. Weakly expressed in medulloblastoma (MB) compared with normal cerebellar tissues.

Neuralized-1 Polyclonal Antibody - Protocols

Provided below are standard protocols that you may find useful for product applications.

- [Western Blot](#)
- [Blocking Peptides](#)
- [Dot Blot](#)
- [Immunohistochemistry](#)
- [Immunofluorescence](#)
- [Immunoprecipitation](#)
- [Flow Cytometry](#)
- [Cell Culture](#)