

MAPK3 Antibody (Y204)
Affinity Purified Rabbit Polyclonal Antibody (Pab)
Catalog # AP7251e

Specification

MAPK3 Antibody (Y204) - Product Information

Application	WB,E
Primary Accession	P27361
Other Accession	P39745 , P21708 , Q63844 , P26696 , P63086 , P63085 , P28482 , P46196 , P40417
Reactivity Predicted	Human Drosophila, Bovine, Mouse, Rat, Xenopus, C.Elegans
Host	Rabbit
Clonality	Polyclonal
Isotype	Rabbit Ig
Antigen Region	182-211

MAPK3 Antibody (Y204) - Additional Information

Gene ID 5595

Other Names

Mitogen-activated protein kinase 3, MAP kinase 3, MAPK 3, ERT2, Extracellular signal-regulated kinase 1, ERK-1, Insulin-stimulated MAP2 kinase, MAP kinase isoform p44, p44-MAPK, Microtubule-associated protein 2 kinase, p44-ERK1, MAPK3, ERK1, PRKM3

Target/Specificity

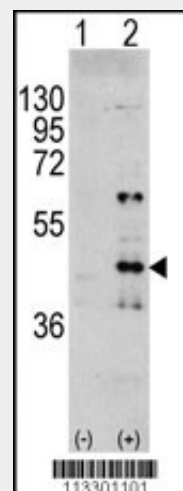
This MAPK3 antibody is generated from rabbits immunized with a KLH conjugated synthetic peptide between 182-211 amino acids from human MAPK3.

Dilution

WB~~1:1000

Format

Purified polyclonal antibody supplied in PBS with 0.09% (W/V) sodium azide. This antibody is purified through a protein A column, followed by peptide affinity purification.



Western blot analysis of MAPK3 (arrow) using rabbit polyclonal MAPK3 Antibody (Y204) (RB13301). 293 cell lysates (2 ug/lane) either nontransfected (Lane 1) or transiently transfected with the MAPK3 gene (Lane 2) (Origene Technologies).

MAPK3 Antibody (Y204) - Background

MAPK3 is a member of the MAP kinase family. MAP kinases, also known as extracellular signal-regulated kinases (ERKs), act in a signaling cascade that regulates various cellular processes such as proliferation, differentiation, and cell cycle progression in response to a variety of extracellular signals. This kinase is activated by upstream kinases, resulting in its translocation to the nucleus where it phosphorylates nuclear targets.

MAPK3 Antibody (Y204) - References

- Munshi, H.G., et al., J. Biol. Chem. 279(37):39042-39050 (2004).
- Mukherjee, S., et al., Infect. Immun. 72(9):5274-5282 (2004).
- Sebkova, L., et al., Infect. Immun. 72(9):5019-5026 (2004).
- Huang, H.M., et al., Biochem. Biophys. Res.

Storage

Maintain refrigerated at 2-8°C for up to 2 weeks. For long term storage store at -20°C in small aliquots to prevent freeze-thaw cycles.

Precautions

MAPK3 Antibody (Y204) is for research use only and not for use in diagnostic or therapeutic procedures.

Commun. 320(4):1247-1252 (2004).

Mizuno, S., et al., Am. J. Respir. Cell Mol. Biol. 31(2):184-192 (2004).

MAPK3 Antibody (Y204) - Protein Information

Name MAPK3

Synonyms ERK1, PRKM3

Function

Serine/threonine kinase which acts as an essential component of the MAP kinase signal transduction pathway. MAPK1/ERK2 and MAPK3/ERK1 are the 2 MAPKs which play an important role in the MAPK/ERK cascade. They participate also in a signaling cascade initiated by activated KIT and KITLG/SCF. Depending on the cellular context, the MAPK/ERK cascade mediates diverse biological functions such as cell growth, adhesion, survival and differentiation through the regulation of transcription, translation, cytoskeletal rearrangements. The MAPK/ERK cascade plays also a role in initiation and regulation of meiosis, mitosis, and postmitotic functions in differentiated cells by phosphorylating a number of transcription factors. About 160 substrates have already been discovered for ERKs. Many of these substrates are localized in the nucleus, and seem to participate in the regulation of transcription upon stimulation. However, other substrates are found in the cytosol as well as in other cellular organelles, and those are responsible for processes such as translation, mitosis and apoptosis. Moreover, the MAPK/ERK cascade is also involved in the regulation of the endosomal dynamics, including lysosome processing and endosome cycling through the perinuclear recycling compartment (PNRC); as well as in the fragmentation of the Golgi apparatus during mitosis. The substrates include transcription factors (such as ATF2, BCL6, ELK1, ERF, FOS, HSF4 or SPZ1), cytoskeletal elements (such as CANX, CTTN, GJA1, MAP2, MAPT, PXN, SORBS3 or

STMN1), regulators of apoptosis (such as BAD, BTG2, CASP9, DAPK1, IER3, MCL1 or PPARG), regulators of translation (such as EIF4EBP1) and a variety of other signaling-related molecules (like ARHGEF2, FRS2 or GRB10). Protein kinases (such as RAF1, RPS6KA1/RSK1, RPS6KA3/RSK2, RPS6KA2/RSK3, RPS6KA6/RSK4, SYK, MKNK1/MNK1, MKNK2/MNK2, RPS6KA5/MSK1, RPS6KA4/MSK2, MAPKAPK3 or MAPKAPK5) and phosphatases (such as DUSP1, DUSP4, DUSP6 or DUSP16) are other substrates which enable the propagation the MAPK/ERK signal to additional cytosolic and nuclear targets, thereby extending the specificity of the cascade.

Cellular Location

Cytoplasm

{ECO:0000250|UniProtKB:P21708}.

Nucleus. Membrane, caveola

{ECO:0000250|UniProtKB:P21708}. Cell

junction, focal adhesion

{ECO:0000250|UniProtKB:Q63844}

Note=Autophosphorylation at Thr-207

promotes nuclear localization

(PubMed:19060905). PEA15-binding

redirects the biological outcome of MAPK3

kinase-signaling by sequestering MAPK3

into the cytoplasm (By similarity).

{ECO:0000250|UniProtKB:Q63844,

ECO:0000269|PubMed:19060905}

MAPK3 Antibody (Y204) - Protocols

Provided below are standard protocols that you may find useful for product applications.

- [Western Blot](#)
- [Blocking Peptides](#)
- [Dot Blot](#)
- [Immunohistochemistry](#)
- [Immunofluorescence](#)
- [Immunoprecipitation](#)
- [Flow Cytometry](#)
- [Cell Culture](#)

MAPK3 Antibody (Y204) - Citations

- [Regulation of mechanical stress-induced MMP-13 and ADAMTS-5 expression by RUNX-2 transcriptional factor in SW1353 chondrocyte-like cells.](#)