

AMPK alpha (PRKAA1) Antibody (S487)
Affinity Purified Rabbit Polyclonal Antibody (Pab)
Catalog # AP7260a

Specification

AMPK alpha (PRKAA1) Antibody (S487) - Product Information

Application	WB, IHC-P,E
Primary Accession	Q13131
Other Accession	Q86VS1
Reactivity	Human
Host	Rabbit
Clonality	Polyclonal
Isotype	Rabbit Ig
Calculated MW	64009
Antigen Region	474-502

AMPK alpha (PRKAA1) Antibody (S487) - Additional Information

Gene ID 5562

Other Names

5'-AMP-activated protein kinase catalytic subunit alpha-1, AMPK subunit alpha-1, Acetyl-CoA carboxylase kinase, ACACA kinase, Hydroxymethylglutaryl-CoA reductase kinase, HMGCR kinase, Tau-protein kinase PRKAA1, PRKAA1, AMPK1

Target/Specificity

This AMPK alpha(PRKAA1) antibody is generated from rabbits immunized with a KLH conjugated synthetic peptide between 474-502 amino acids from human AMPK alpha(PRKAA1).

Dilution

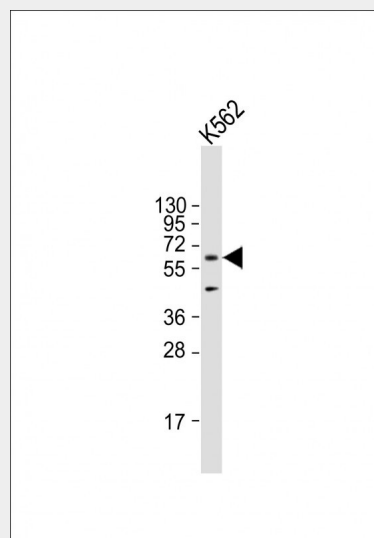
WB~~1:1000
IHC-P~~1:10~50

Format

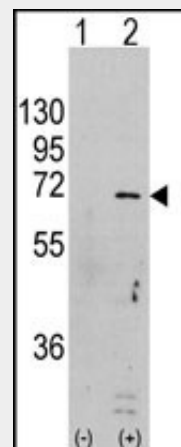
Purified polyclonal antibody supplied in PBS with 0.09% (W/V) sodium azide. This antibody is purified through a protein A column, followed by peptide affinity purification.

Storage

Maintain refrigerated at 2-8°C for up to 2 weeks. For long term storage store at -20°C



Anti-PRKAA1 Antibody (S487) at 1:2000 dilution + K562 whole cell lysate
Lysates/proteins at 20 µg per lane.
Secondary Goat Anti-Rabbit IgG, (H+L), Peroxidase conjugated at 1/10000 dilution.
Predicted band size : 64 kDa
Blocking/Dilution buffer: 5% NFDM/TBST.



Western blot analysis of PRKAA1 (arrow) using rabbit polyclonal PRKAA1 Antibody (S246) (Cat.#AP7260a). 293 cell lysates (2 ug/lane) either nontransfected (Lane 1) or transiently transfected with the PRKAA1 gene (Lane 2) (Origene Technologies).

in small aliquots to prevent freeze-thaw cycles.

Precautions

AMPK alpha (PRKAA1) Antibody (S487) is for research use only and not for use in diagnostic or therapeutic procedures.

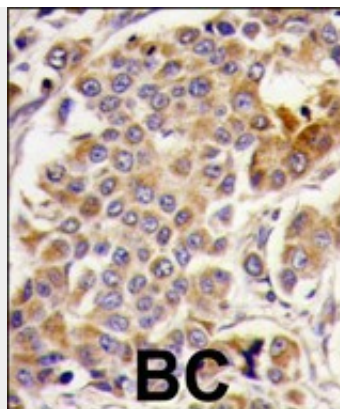
AMPK alpha (PRKAA1) Antibody (S487) - Protein Information

Name PRKAA1

Synonyms AMPK1

Function

Catalytic subunit of AMP-activated protein kinase (AMPK), an energy sensor protein kinase that plays a key role in regulating cellular energy metabolism. In response to reduction of intracellular ATP levels, AMPK activates energy-producing pathways and inhibits energy-consuming processes: inhibits protein, carbohydrate and lipid biosynthesis, as well as cell growth and proliferation. AMPK acts via direct phosphorylation of metabolic enzymes, and by longer-term effects via phosphorylation of transcription regulators. Also acts as a regulator of cellular polarity by remodeling the actin cytoskeleton; probably by indirectly activating myosin. Regulates lipid synthesis by phosphorylating and inactivating lipid metabolic enzymes such as ACACA, ACACB, GYS1, HMGCR and LIPE; regulates fatty acid and cholesterol synthesis by phosphorylating acetyl-CoA carboxylase (ACACA and ACACB) and hormone-sensitive lipase (LIPE) enzymes, respectively. Regulates insulin-signaling and glycolysis by phosphorylating IRS1, PFKFB2 and PFKFB3. AMPK stimulates glucose uptake in muscle by increasing the translocation of the glucose transporter SLC2A4/GLUT4 to the plasma membrane, possibly by mediating phosphorylation of TBC1D4/AS160. Regulates transcription and chromatin structure by phosphorylating transcription regulators involved in energy metabolism such as CRTC2/TORC2, FOXO3, histone H2B, HDAC5, MEF2C, MLXIPL/ChREBP, EP300, HNF4A, p53/TP53, SREBF1, SREBF2 and PPARGC1A. Acts as a key regulator of glucose homeostasis in liver by phosphorylating CRTC2/TORC2, leading to CRTC2/TORC2 sequestration in



Formalin-fixed and paraffin-embedded human breast carcinoma tissue reacted with PRKAA1-pS487, which was peroxidase-conjugated to the secondary antibody, followed by DAB staining. This data demonstrates the use of this antibody for immunohistochemistry; clinical relevance has not been evaluated.

AMPK alpha (PRKAA1) Antibody (S487) - Background

PRKAA1 belongs to the ser/thr protein kinase family. It is the catalytic subunit of the 5'-prime-AMP-activated protein kinase (AMPK). AMPK is a cellular energy sensor conserved in all eukaryotic cells. The kinase activity of AMPK is activated by the stimuli that increase the cellular AMP/ATP ratio. AMPK regulates the activities of a number of key metabolic enzymes through phosphorylation. It protects cells from stresses that cause ATP depletion by switching off ATP-consuming biosynthetic pathways.

AMPK alpha (PRKAA1) Antibody (S487) - References

Pang,T., J. Biol. Chem. 282 (1), 495-506 (2007)
Crawford,R.M., Cell. Signal. 18 (10), 1595-1603 (2006)
Crawford,R.M., Mol. Cell. Biol. 26 (15), 5921-5931 (2006)

the cytoplasm. In response to stress, phosphorylates 'Ser-36' of histone H2B (H2BS36ph), leading to promote transcription. Acts as a key regulator of cell growth and proliferation by phosphorylating TSC2, RPTOR and ATG1/ULK1: in response to nutrient limitation, negatively regulates the mTORC1 complex by phosphorylating RPTOR component of the mTORC1 complex and by phosphorylating and activating TSC2. In response to nutrient limitation, promotes autophagy by phosphorylating and activating ATG1/ULK1. In that process also activates WDR45 (PubMed:<<http://www.uniprot.org/citations/28561066>>28561066). In response to nutrient limitation, phosphorylates transcription factor FOXO3 promoting FOXO3 mitochondrial import (By similarity). AMPK also acts as a regulator of circadian rhythm by mediating phosphorylation of CRY1, leading to destabilize it. May regulate the Wnt signaling pathway by phosphorylating CTNNB1, leading to stabilize it. Also has tau-protein kinase activity: in response to amyloid beta A4 protein (APP) exposure, activated by CAMKK2, leading to phosphorylation of MAPT/TAU; however the relevance of such data remains unclear in vivo. Also phosphorylates CFTR, EEF2K, KLC1, NOS3 and SLC12A1.

Cellular Location

Cytoplasm. Nucleus. Note=In response to stress, recruited by p53/TP53 to specific promoters

AMPK alpha (PRKAA1) Antibody (S487) - Protocols

Provided below are standard protocols that you may find useful for product applications.

- [Western Blot](#)
- [Blocking Peptides](#)
- [Dot Blot](#)
- [Immunohistochemistry](#)
- [Immunofluorescence](#)
- [Immunoprecipitation](#)
- [Flow Cytometry](#)
- [Cell Culture](#)