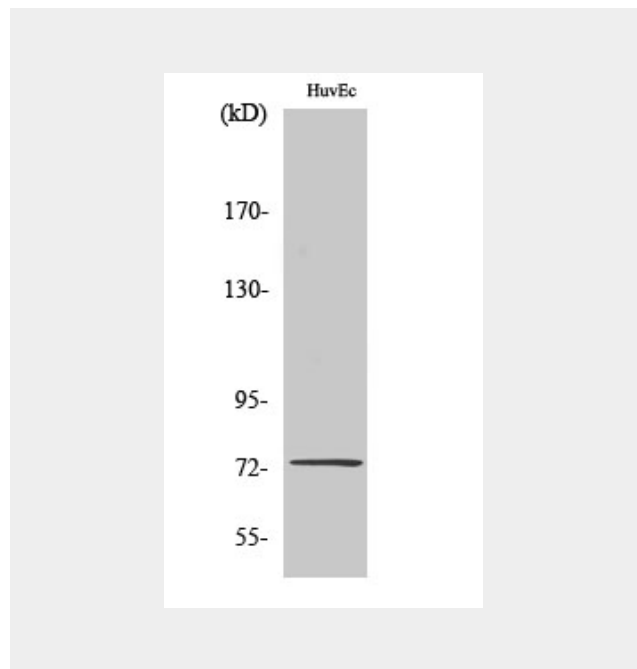


SSH3 Polyclonal Antibody
Catalog # AP72611**Specification****SSH3 Polyclonal Antibody - Product Information**

Application	WB
Primary Accession	Q8TE77
Reactivity	Human, Mouse, Rat
Host	Rabbit
Clonality	Polyclonal

SSH3 Polyclonal Antibody - Additional Information**Gene ID** 54961**Other Names**SSH3; SSH3L; Protein phosphatase
Slingshot homolog 3; SSH-like protein 3;
SSH-3L; hSSH-3L**Dilution**WB~~Western Blot: 1/500 - 1/2000.
Immunohistochemistry: 1/100 - 1/300.
ELISA: 1/40000. Not yet tested in other
applications.**Format**Liquid in PBS containing 50% glycerol, 0.5%
BSA and 0.02% sodium azide.**Storage Conditions**

-20°C

SSH3 Polyclonal Antibody - Protein Information**Name** SSH3**Synonyms** SSH3L**Function**Protein phosphatase which may play a role
in the regulation of actin filament dynamics.
Can dephosphorylate and activate the actin
binding/depolymerizing factor cofilin, which
subsequently binds to actin filaments and
stimulates their disassembly (By similarity).**Cellular Location****SSH3 Polyclonal Antibody - Background**Protein phosphatase which may play a role in
the regulation of actin filament dynamics. Can
dephosphorylate and activate the actin
binding/depolymerizing factor cofilin, which
subsequently binds to actin filaments and
stimulates their disassembly (By similarity).

Cytoplasm, cytoskeleton. Nucleus

SSH3 Polyclonal Antibody - Protocols

Provided below are standard protocols that you may find useful for product applications.

- [Western Blot](#)
- [Blocking Peptides](#)
- [Dot Blot](#)
- [Immunohistochemistry](#)
- [Immunofluorescence](#)
- [Immunoprecipitation](#)
- [Flow Cytometry](#)
- [Cell Culture](#)