

CASC3 Antibody (Y181)
Affinity Purified Rabbit Polyclonal Antibody (Pab)
Catalog # AP7264d

Specification

CASC3 Antibody (Y181) - Product Information

Application	WB, IHC-P,E
Primary Accession	O15234
Other Accession	A0JMU8 , Q8K3X0 , Q8K3W3 , Q1ECZ4 , A5D7H5 , NP_619601
Reactivity Predicted	Human Bovine, Zebrafish, Mouse, Rat, Xenopus
Host	Rabbit
Clonality	Polyclonal
Isotype	Rabbit Ig
Calculated MW	76278
Antigen Region	159-188

CASC3 Antibody (Y181) - Additional Information

Gene ID 22794

Other Names

Protein CASC3, Cancer susceptibility candidate gene 3 protein, Metastatic lymph node gene 51 protein, MLN 51, Protein barentsz, Btz, CASC3, MLN51

Target/Specificity

This CASC3 antibody is generated from rabbits immunized with a KLH conjugated synthetic peptide between 159-188 amino acids from human CASC3.

Dilution

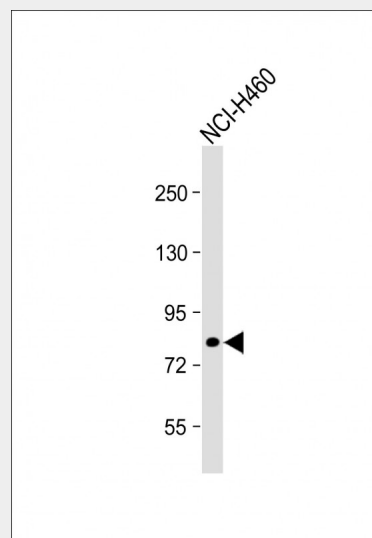
WB~~1:1000
IHC-P~~1:10~50

Format

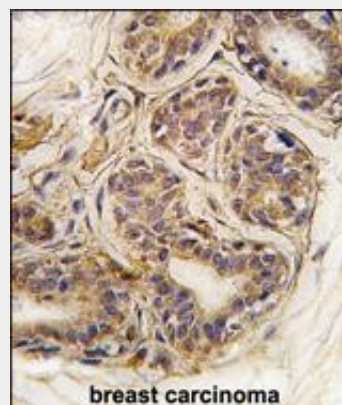
Purified polyclonal antibody supplied in PBS with 0.09% (W/V) sodium azide. This antibody is purified through a protein A column, followed by peptide affinity purification.

Storage

Maintain refrigerated at 2-8°C for up to 2



Anti-CASC3 Antibody (Y181) at 1:1000 dilution + NCI-H460 whole cell lysate
Lysates/proteins at 20 µg per lane.
Secondary Goat Anti-Rabbit IgG, (H+L), Peroxidase conjugated at 1/10000 dilution.
Predicted band size : 76 kDa
Blocking/Dilution buffer: 5% NFDM/TBST.



Formalin-fixed and paraffin-embedded human breast carcinoma tissue reacted with CASC3 Antibody (Y181) (Cat.#AP7264d), which was peroxidase-conjugated to the secondary antibody, followed by DAB staining. This data demonstrates the use of this antibody for immunohistochemistry; clinical relevance has not been evaluated.

weeks. For long term storage store at -20°C in small aliquots to prevent freeze-thaw cycles.

Precautions

CASC3 Antibody (Y181) is for research use only and not for use in diagnostic or therapeutic procedures.

CASC3 Antibody (Y181) - Protein Information

Name CASC3

Synonyms MLN51

{ECO:0000303|PubMed:12080473}

Function

Required for pre-mRNA splicing as component of the spliceosome (PubMed:28502770, PubMed:29301961). Core component of the splicing-dependent multiprotein exon junction complex (EJC) deposited at splice junctions on mRNAs. The EJC is a dynamic structure consisting of core proteins and several peripheral nuclear and cytoplasmic associated factors that join the complex only transiently either during EJC assembly or during subsequent mRNA metabolism. The EJC marks the position of the exon-exon junction in the mature mRNA for the gene expression machinery and the core components remain bound to spliced mRNAs throughout all stages of mRNA metabolism thereby influencing downstream processes including nuclear mRNA export, subcellular mRNA localization, translation efficiency and nonsense-mediated mRNA decay (NMD). Stimulates the ATPase and RNA-helicase activities of EIF4A3. Plays a role in the stress response by participating in cytoplasmic stress granules assembly and by favoring cell recovery following stress. Component of the dendritic ribonucleoprotein particles (RNPs) in hippocampal neurons. May play a role in mRNA transport. Binds spliced mRNA in sequence-independent manner, 20-24 nucleotides upstream of mRNA exon-exon junctions. Binds poly(G) and poly(U) RNA homomer.

CASC3 Antibody (Y181) - Background

Component of the dendritic ribonucleoprotein particles (RNPs) in hippocampal neurons. May play a role in mRNA transport.

CASC3 Antibody (Y181) - References

Macchi,P., J. Neurosci. 23 (13), 5778-5788 (2003)

Degot,S., Oncogene 21 (28), 4422-4434 (2002)

Cellular Location

Cytoplasm. Cytoplasm, perinuclear region
{ECO:0000250|UniProtKB:Q8K3W3}.

Nucleus. Nucleus speckle. Cytoplasm,
Stress granule. Cytoplasm, Cytoplasmic
ribonucleoprotein granule
{ECO:0000250|UniProtKB:Q8K3X0}. Cell
projection, dendrite
{ECO:0000250|UniProtKB:Q8K3X0}.

Note=Shuttles between the nucleus and the
cytoplasm in a XPO1/CRM1-dependent
manner. Transported to the cytoplasm as
part of the exon junction complex (EJC)
bound to mRNA (PubMed:15166247). In
nuclear speckles, colocalizes with MAGOH.
Under stress conditions, colocalizes with
FMR1 and TIA1, but not MAGOH and RBM8A
EJC core factors, in cytoplasmic stress
granules (PubMed:17652158). In the
dendrites of hippocampal neurons, localizes
to dendritic ribonucleoprotein granules (By
similarity)
{ECO:0000250|UniProtKB:Q8K3X0,
ECO:0000269|PubMed:15166247,
ECO:0000269|PubMed:17652158}

Tissue Location

Widely expressed. Overexpressed in breast
cancers and metastasis, as well as in
gastric cancers

CASC3 Antibody (Y181) - Protocols

Provided below are standard protocols that you
may find useful for product applications.

- [Western Blot](#)
- [Blocking Peptides](#)
- [Dot Blot](#)
- [Immunohistochemistry](#)
- [Immunofluorescence](#)
- [Immunoprecipitation](#)
- [Flow Cytometry](#)
- [Cell Culture](#)