

**REA (PHB2) Antibody (N-term)**  
**Purified Rabbit Polyclonal Antibody (Pab)**  
**Catalog # AP7270a**

**Specification**

**REA (PHB2) Antibody (N-term) - Product Information**

|                      |   |
|----------------------|---|
| Application          | WB, IHC-P,E   |
| Primary Accession    | <a href="#">Q99623</a>  |
| Other Accession      | <a href="#">Q5XIH7</a> , <a href="#">Q35129</a> ,<br><a href="#">Q5ZMN3</a> , <a href="#">Q2HJ97</a> ,<br><a href="#">NP_009204</a> |
| Reactivity Predicted | Human<br>Bovine, Chicken,<br>Mouse, Rat   |
| Host                 | Rabbit  |
| Clonality            | Polyclonal  |
| Isotype              | Rabbit Ig   |
| Calculated MW        | 33296   |
| Antigen Region       | 66-95   |

**REA (PHB2) Antibody (N-term) - Additional Information**

**Gene ID** 11331

**Other Names**

Prohibitin-2, B-cell receptor-associated protein BAP37, D-prohibitin, Repressor of estrogen receptor activity, PHB2  
{ECO:0000312|EMBL:AAH147661,  
ECO:0000312|HGNC:HGNC:30306}

**Target/Specificity**

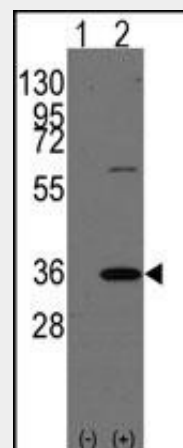
This REA (PHB2) antibody is generated from rabbits immunized with a KLH conjugated synthetic peptide between 66-95 amino acids from the N-terminal region of human REA (PHB2).

**Dilution**

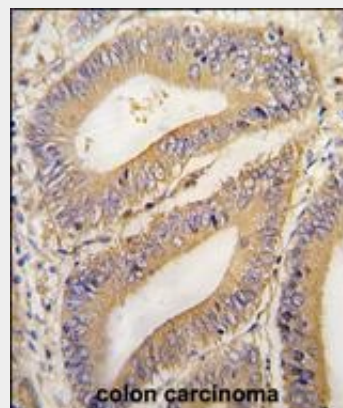
WB~~1:1000  
IHC-P~~1:10~50

**Format**

Purified polyclonal antibody supplied in PBS with 0.09% (W/V) sodium azide. This antibody is purified through a protein A column, followed by peptide affinity purification.



Western blot analysis of PHB2 (arrow) using rabbit polyclonal PHB2 Antibody (Human C-term) (Cat.#AP7270a). 293 cell lysates (2 ug/lane) either nontransfected (Lane 1) or transiently transfected with the PHB2 gene (Lane 2) (Origene Technologies).



Formalin-fixed and paraffin-embedded human colon carcinoma tissue reacted with PHB2 Antibody (N-term) (Cat.#AP7270a), which was peroxidase-conjugated to the secondary antibody, followed by DAB staining. This data demonstrates the use of this antibody for immunohistochemistry; clinical relevance has not been evaluated.

**REA (PHB2) Antibody (N-term) - Background**

**Storage**

Maintain refrigerated at 2-8°C for up to 2 weeks. For long term storage store at -20°C in small aliquots to prevent freeze-thaw cycles.

**Precautions**

REA (PHB2) Antibody (N-term) is for research use only and not for use in diagnostic or therapeutic procedures.

**REA (PHB2) Antibody (N-term) - Protein Information****Name** PHB2

{ECO:0000312|EMBL:AAH14766.1,  
ECO:0000312|HGNC:HGNC:30306}

**Function**

Protein with pleiotropic attributes mediated in a cell- compartment- and tissue-specific manner, which include the plasma membrane-associated cell signaling functions, mitochondrial chaperone, and transcriptional co-regulator of transcription factors and sex steroid hormones in the nucleus.

**Cellular Location**

Mitochondrion inner membrane. Cytoplasm. Nucleus. Cell membrane [Isoform 2]: Mitochondrion inner membrane

PHB2 acts as a mediator of transcriptional repression by nuclear hormone receptors via recruitment of histone deacetylases. This protein functions as an estrogen receptor (ER)-selective coregulator that potentiates the inhibitory activities of antiestrogens and represses the activity of estrogens. It competes with NCOA1 for modulation of ER transcriptional activity. It is probably involved in regulating mitochondrial respiration activity and in aging.

**REA (PHB2) Antibody (N-term) - References**

Takata,H., Curr. Biol. 17 (15), 1356-1361 (2007)

Kasashima,K., J. Biol. Chem. 281 (47), 36401-36410 (2006)

**REA (PHB2) Antibody (N-term) - Protocols**

Provided below are standard protocols that you may find useful for product applications.

- [Western Blot](#)
- [Blocking Peptides](#)
- [Dot Blot](#)
- [Immunohistochemistry](#)
- [Immunofluorescence](#)
- [Immunoprecipitation](#)
- [Flow Cytometry](#)
- [Cell Culture](#)