

**TGIF Antibody (Center L223)**  
**Purified Rabbit Polyclonal Antibody (Pab)**  
**Catalog # AP7279c**

**Specification**

**TGIF Antibody (Center L223) - Product Information**

Application	WB,E
Primary Accession	<a href="#">Q15583</a>
Other Accession	<a href="#">Q8C0Y1</a> , <a href="#">Q9GZN2</a> , <a href="#">P70284</a> , <a href="#">Q90655</a>
Reactivity	Human
Predicted	Chicken, Mouse
Host	Rabbit
Clonality	Polyclonal
Isotype	Rabbit Ig
Calculated MW	43013
Antigen Region	208-237

**TGIF Antibody (Center L223) - Additional Information**

**Gene ID** 7050

**Other Names**

Homeobox protein TGIF1,  
5'-TG-3'-interacting factor 1, TGIF1, TGIF

**Target/Specificity**

This TGIF antibody is generated from rabbits immunized with a KLH conjugated synthetic peptide between 208-237 amino acids from the Central region of human TGIF.

**Dilution**

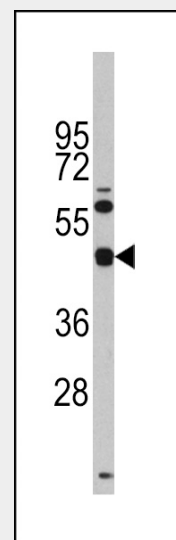
WB~~1:1000

**Format**

Purified polyclonal antibody supplied in PBS with 0.09% (W/V) sodium azide. This antibody is prepared by Saturated Ammonium Sulfate (SAS) precipitation followed by dialysis against PBS.

**Storage**

Maintain refrigerated at 2-8°C for up to 2 weeks. For long term storage store at -20°C in small aliquots to prevent freeze-thaw cycles.



Western blot analysis of anti-TGIF1 Antibody (Center L223) (RB14109) in Y79 cell line lysates (35ug/lane). TGIF1 (arrow) was detected using the purified Pab.

**TGIF Antibody (Center L223) - Background**

TGIF1 is a member of the three-amino acid loop extension (TALE) superclass of atypical homeodomains. TALE homeobox proteins are highly conserved transcription regulators. This particular homeodomain binds to a previously characterized retinoid X receptor responsive element from the cellular retinol-binding protein II promoter. In addition to its role in inhibiting 9-cis-retinoic acid-dependent RXR alpha transcription activation of the retinoic acid responsive element, the protein is an active transcriptional co-repressor of SMAD2 and may participate in the transmission of nuclear signals during development and in the adult. Mutations in this gene are associated with holoprosencephaly type 4, which is a structural anomaly of the brain.

**TGIF Antibody (Center L223) - References**

Pertile,K.K., Invest. Ophthalmol. Vis. Sci. 49

**Precautions**

TGIF Antibody (Center L223) is for research use only and not for use in diagnostic or therapeutic procedures.

(1), 49-54 (2008)  
Chavarria-Siles,I., Mol. Psychiatry 12 (11), 1033-1041 (2007)  
Ferrand,N., FASEB J. 21 (2), 488-496 (2007)

**TGIF Antibody (Center L223) - Protein Information**

**Name** TGIF1

**Synonyms** TGIF

**Function**

Binds to a retinoid X receptor (RXR) responsive element from the cellular retinol-binding protein II promoter (CRBP II-RXRE). Inhibits the 9-cis-retinoic acid-dependent RXR alpha transcription activation of the retinoic acid responsive element. Active transcriptional corepressor of SMAD2. Links the nodal signaling pathway to the bifurcation of the forebrain and the establishment of ventral midline structures. May participate in the transmission of nuclear signals during development and in the adult, as illustrated by the down-modulation of the RXR alpha activities.

**Cellular Location**

Nucleus.

**TGIF Antibody (Center L223) - Protocols**

Provided below are standard protocols that you may find useful for product applications.

- [Western Blot](#)
- [Blocking Peptides](#)
- [Dot Blot](#)
- [Immunohistochemistry](#)
- [Immunofluorescence](#)
- [Immunoprecipitation](#)
- [Flow Cytometry](#)
- [Cell Culture](#)