

Aromatase (CYP19A1) Antibody (Center)
Purified Rabbit Polyclonal Antibody (Pab)
Catalog # AP7293c

Specification

**Aromatase (CYP19A1) Antibody (Center) -
Product Information**

Application	WB,E
Primary Accession	P11511
Other Accession	Q29605
Reactivity	Human
Predicted	Rabbit
Host	Rabbit
Clonality	Polyclonal
Isotype	Rabbit Ig
Antigen Region	221-253

**Aromatase (CYP19A1) Antibody (Center) -
Additional Information**

Gene ID 1588

Other Names

Aromatase, CYPXIX, Cytochrome
P-450AROM, Cytochrome P450 19A1,
Estrogen synthase, CYP19A1, ARO1, CYAR,
CYP19

Target/Specificity

This Aromatase (CYP19A1) antibody is generated from rabbits immunized with a KLH conjugated synthetic peptide between 221-253 amino acids from the Central region of human Aromatase (CYP19A1).

Dilution

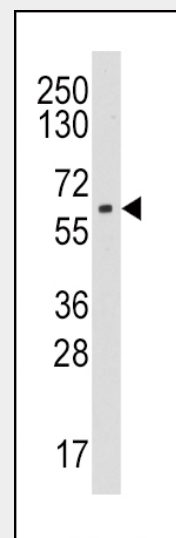
WB~~1:1000

Format

Purified polyclonal antibody supplied in PBS with 0.09% (W/V) sodium azide. This antibody is prepared by Saturated Ammonium Sulfate (SAS) precipitation followed by dialysis against PBS.

Storage

Maintain refrigerated at 2-8°C for up to 2 weeks. For long term storage store at -20°C in small aliquots to prevent freeze-thaw cycles.



Western blot analysis of anti-CYP19A1(Center) Pab (Cat.#AP7293c) in HL60 cell line lysates (35ug/lane). CYP19A1(arrow) was detected using the purified Pab.

**Aromatase (CYP19A1) Antibody (Center) -
Background**

CYP19A1 is a member of the cytochrome P450 superfamily of enzymes. The cytochrome P450 proteins are monooxygenases which catalyze many reactions involved in drug metabolism and synthesis of cholesterol, steroids and other lipids. This protein localizes to the endoplasmic reticulum and catalyzes the last steps of estrogen biosynthesis, three successive hydroxylations of the A ring of androgens. Mutations in this gene can result in either increased or decreased aromatase activity; the associated phenotypes suggest that estrogen functions both as a sex steroid hormone and in growth or differentiation.

**Aromatase (CYP19A1) Antibody (Center) -
References**

Ikeda, S., Am. J. Gastroenterol. 103 (6),

Precautions

Aromatase (CYP19A1) Antibody (Center) is for research use only and not for use in diagnostic or therapeutic procedures.

1476-1487 (2008)

Dos Santos,(er) DNA Cell Biol. (2008) In press
Nelson,Pharmacogenetics 14 (1), 1-18 (2004)

Aromatase (CYP19A1) Antibody (Center) - Protein Information**Name** CYP19A1

{ECO:0000303|PubMed:24705274,
ECO:0000312|HGNC:HGNC:2594}

Function

A cytochrome P450 monooxygenase that catalyzes the conversion of C19 androgens, androst-4-ene-3,17-dione (androstenedione) and testosterone to the C18 estrogens, estrone and estradiol, respectively (PubMed:27702664, PubMed:2848247). Catalyzes three successive oxidations of C19 androgens: two conventional oxidations at C19 yielding 19-hydroxy and 19-oxo/19-aldehyde derivatives, followed by a third oxidative aromatization step that involves C1-beta hydrogen abstraction combined with cleavage of the C10-C19 bond to yield a phenolic A ring and formic acid (PubMed:20385561). Alternatively, the third oxidative reaction yields a 19-norsteroid and formic acid. Converts dihydrotestosterone to delta1,10-dehydro 19-nordihydrotestosterone and may play a role in homeostasis of this potent androgen (PubMed:22773874). Also displays 2-hydroxylase activity toward estrone (PubMed:22773874). Mechanistically, uses molecular oxygen inserting one oxygen atom into a substrate, and reducing the second into a water molecule, with two electrons provided by NADPH via cytochrome P450 reductase (CPR; NADPH-ferrihemoprotein reductase) (PubMed:20385561).

target="_blank">20385561,
PubMed:<a href="http://www.uniprot.org/ci
tations/22773874"
target="_blank">22773874).

Cellular Location

Endoplasmic reticulum membrane;
Multi-pass membrane protein. Microsome
membrane; Multi- pass membrane protein

Tissue Location

Widely expressed, including in adult and
fetal brain, placenta, skin fibroblasts,
adipose tissue and gonads

**Aromatase (CYP19A1) Antibody (Center) -
Protocols**

Provided below are standard protocols that you
may find useful for product applications.

- [Western Blot](#)
- [Blocking Peptides](#)
- [Dot Blot](#)
- [Immunohistochemistry](#)
- [Immunofluorescence](#)
- [Immunoprecipitation](#)
- [Flow Cytometry](#)
- [Cell Culture](#)